

Ops - Div T

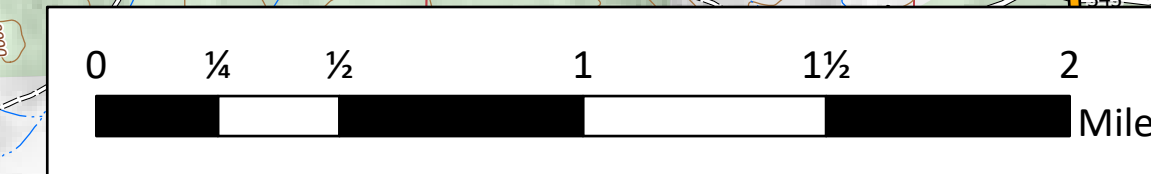
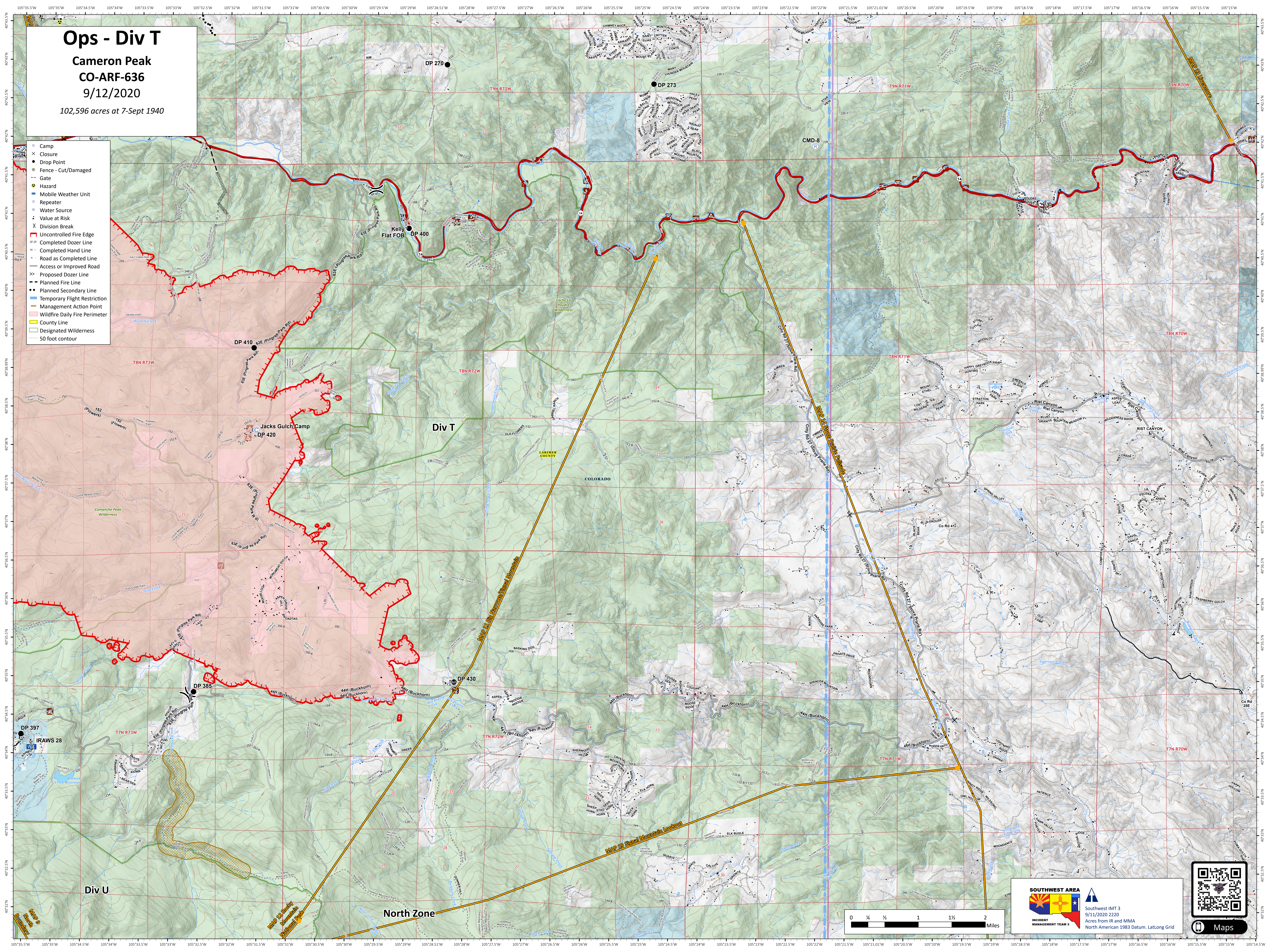
Cameron Peak

CO-ARF-636

9/12/2020

102,596 acres at 7-Sept 1940

- Camp
- ✕ Closure
- Drop Point
- Fence - Cut/Damaged
- ⚡ Gate
- ⚠ Hazard
- 📡 Mobile Weather Unit
- 📡 Repeater
- 💧 Water Source
- ⚠ Value at Risk
- ✂ Division Break
- 🔴 Uncontrolled Fire Edge
- 🟢 Completed Dozer Line
- 🟢 Completed Hand Line
- 🟢 Road as Completed Line
- 🟢 Access or Improved Road
- 🟢 Proposed Dozer Line
- 🟢 Planned Fire Line
- 🟢 Planned Secondary Line
- 🟢 Temporary Flight Restriction
- 🟢 Management Action Point
- 🟢 Wildfire Daily Fire Perimeter
- 🟢 County Line
- 🟢 Designated Wilderness
- 🟢 50 foot contour



SOUTHWEST AREA
INCIDENT MANAGEMENT TEAM 3

Southwest IMT 3
9/11/2020 2220
Acres from IR and MMA
North American 1983 Datum, Latlong Grid

