

# Ops - Div W

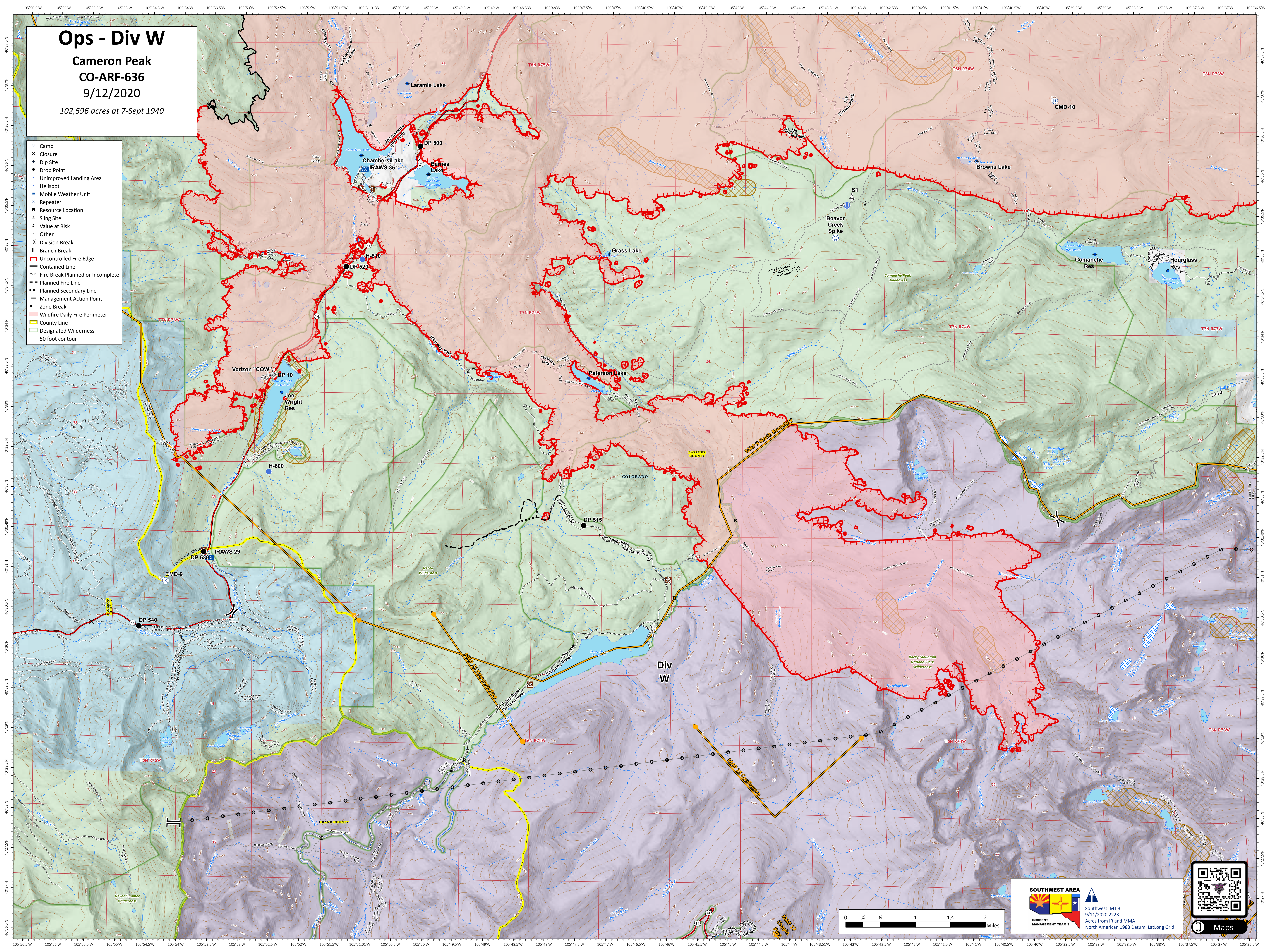
Cameron Peak

CO-ARF-636

9/12/2020

102,596 acres at 7-Sept 1940

- Camp
- ✕ Closure
- Dip Site
- Drop Point
- Unimproved Landing Area
- Helispot
- Mobile Weather Unit
- Repeater
- Resource Location
- ▲ Sling Site
- ▲ Value at Risk
- Other
- X Division Break
- || Branch Break
- Uncontrolled Fire Edge
- Contained Line
- Fire Break Planned or Incomplete
- Planned Fire Line
- Planned Secondary Line
- Management Action Point
- Zone Break
- Wildfire Daily Fire Perimeter
- County Line
- Designated Wilderness
- 50 foot contour



**SOUTHWEST AREA**  
INCIDENT MANAGEMENT TEAM 3

Southwest IMT 3  
9/11/2020 2223  
Acres from IR and MMA  
North American 1983 Datum, LatLong Grid



Maps