

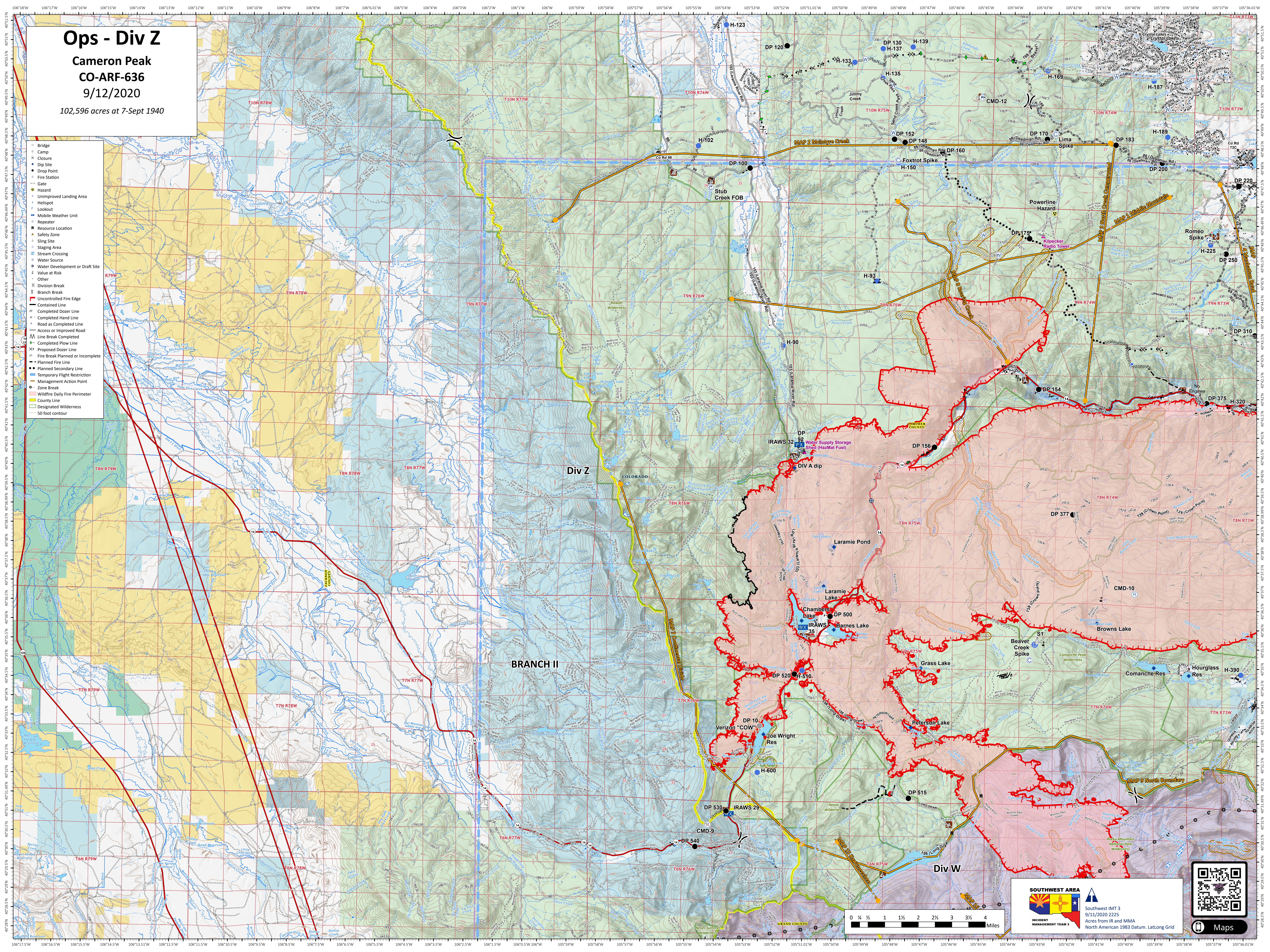
# Ops - Div Z

Cameron Peak  
CO-ARF-636

9/12/2020

102,596 acres at 7-Sept 1940

- Bridge
- Camp
- Closure
- Dip Site
- Drop Point
- Fire Station
- Gate
- Hazard
- Unimproved Landing Area
- Helispot
- Lookout
- Mobile Weather Unit
- Repeater
- Resource Location
- Safety Zone
- Sling Site
- Staging Area
- Stream Crossing
- Water Source
- Water Development or Draft Site
- Value at Risk
- Other
- Division Break
- Branch Break
- Uncontrolled Fire Edge
- Contained Line
- Completed Dozer Line
- Completed Hand Line
- Road as Completed Line
- Access or Improved Road
- Line Break Completed
- Completed Plow Line
- Proposed Dozer Line
- Fire Break Planned or Incomplete
- Planned Fire Line
- Planned Secondary Line
- Temporary Flight Restriction
- Management Action Point
- Zone Break
- Wildfire Daily Fire Perimeter
- County Line
- Designated Wilderness
- 50 foot contour



**SOUTHWEST AREA**  
INCIDENT MANAGEMENT TEAM 3

Southwest IMT 3  
9/11/2020 2225  
Acres from IR and MMA  
North American 1983 Datum, Latlong Grid

