


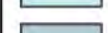
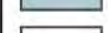
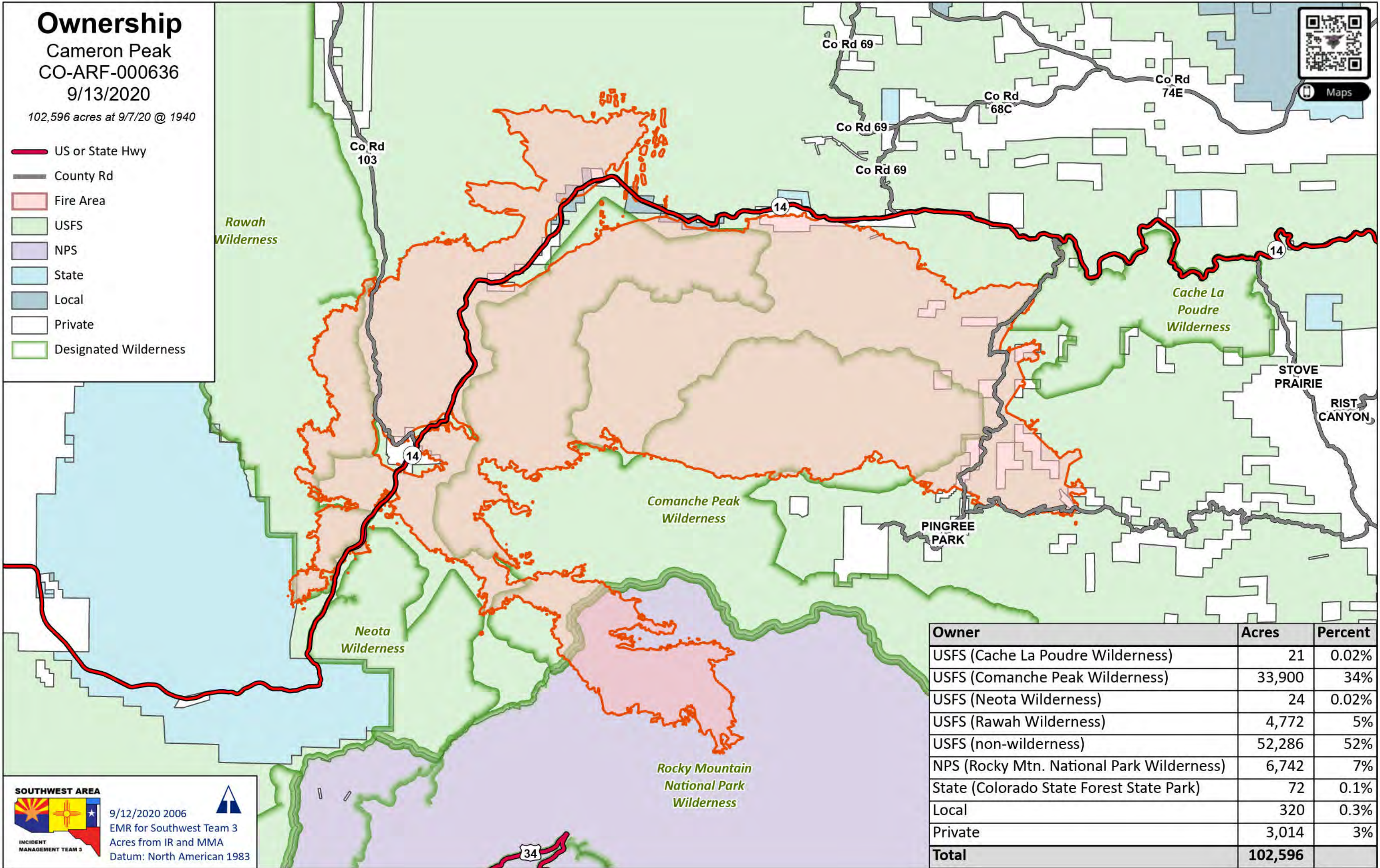


Ownership

Cameron Peak
CO-ARF-000636
9/13/2020

102,596 acres at 9/7/20 @ 1940

-  US or State Hwy
-  County Rd
-  Fire Area
-  USFS
-  NPS
-  State
-  Local
-  Private
-  Designated Wilderness



Owner	Acres	Percent
USFS (Cache La Poudre Wilderness)	21	0.02%
USFS (Comanche Peak Wilderness)	33,900	34%
USFS (Neota Wilderness)	24	0.02%
USFS (Rawah Wilderness)	4,772	5%
USFS (non-wilderness)	52,286	52%
NPS (Rocky Mtn. National Park Wilderness)	6,742	7%
State (Colorado State Forest State Park)	72	0.1%
Local	320	0.3%
Private	3,014	3%
Total	102,596	

SOUTHWEST AREA



9/12/2020 2006
EMR for Southwest Team 3
Acres from IR and MMA
Datum: North American 1983

