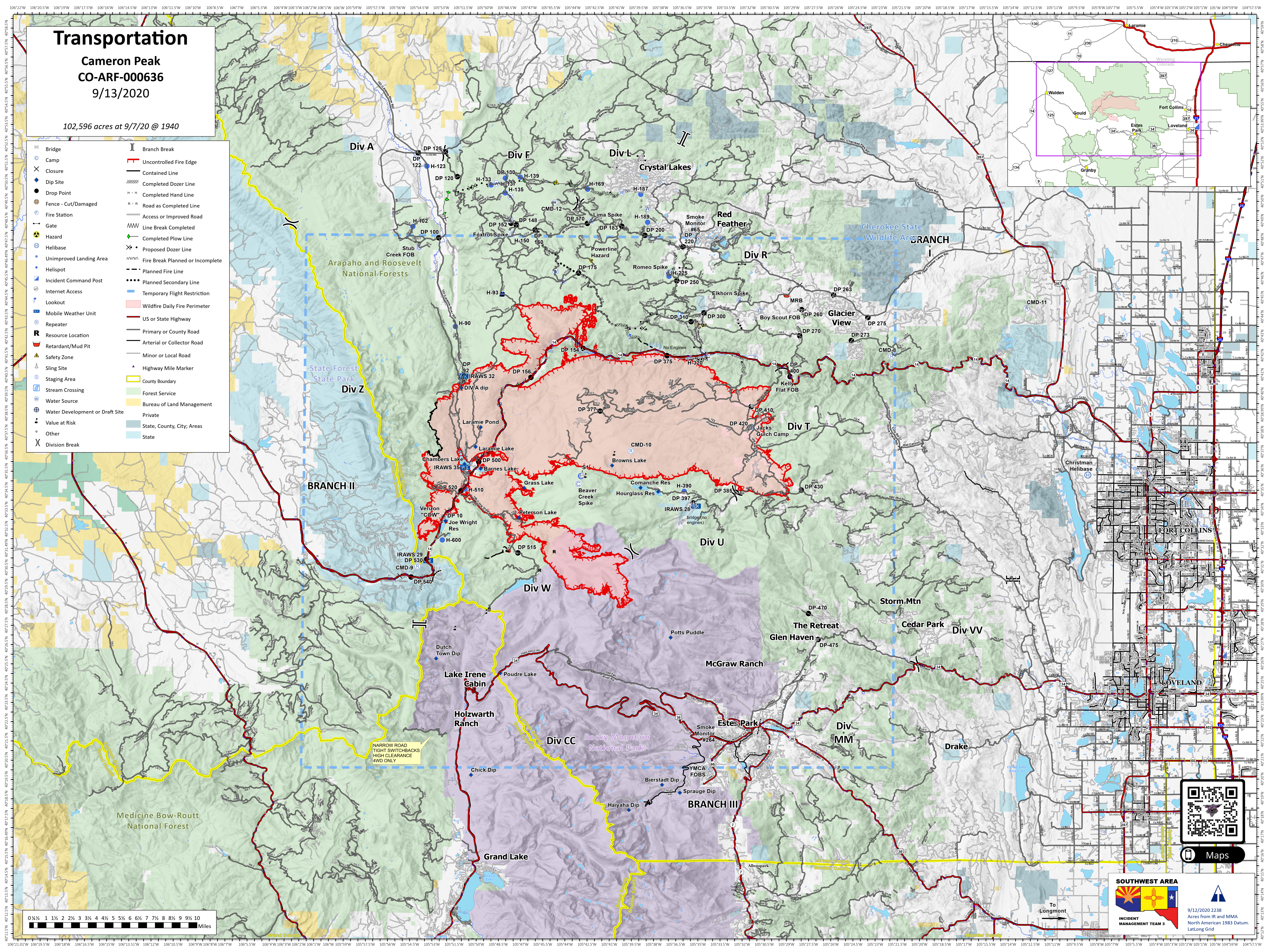
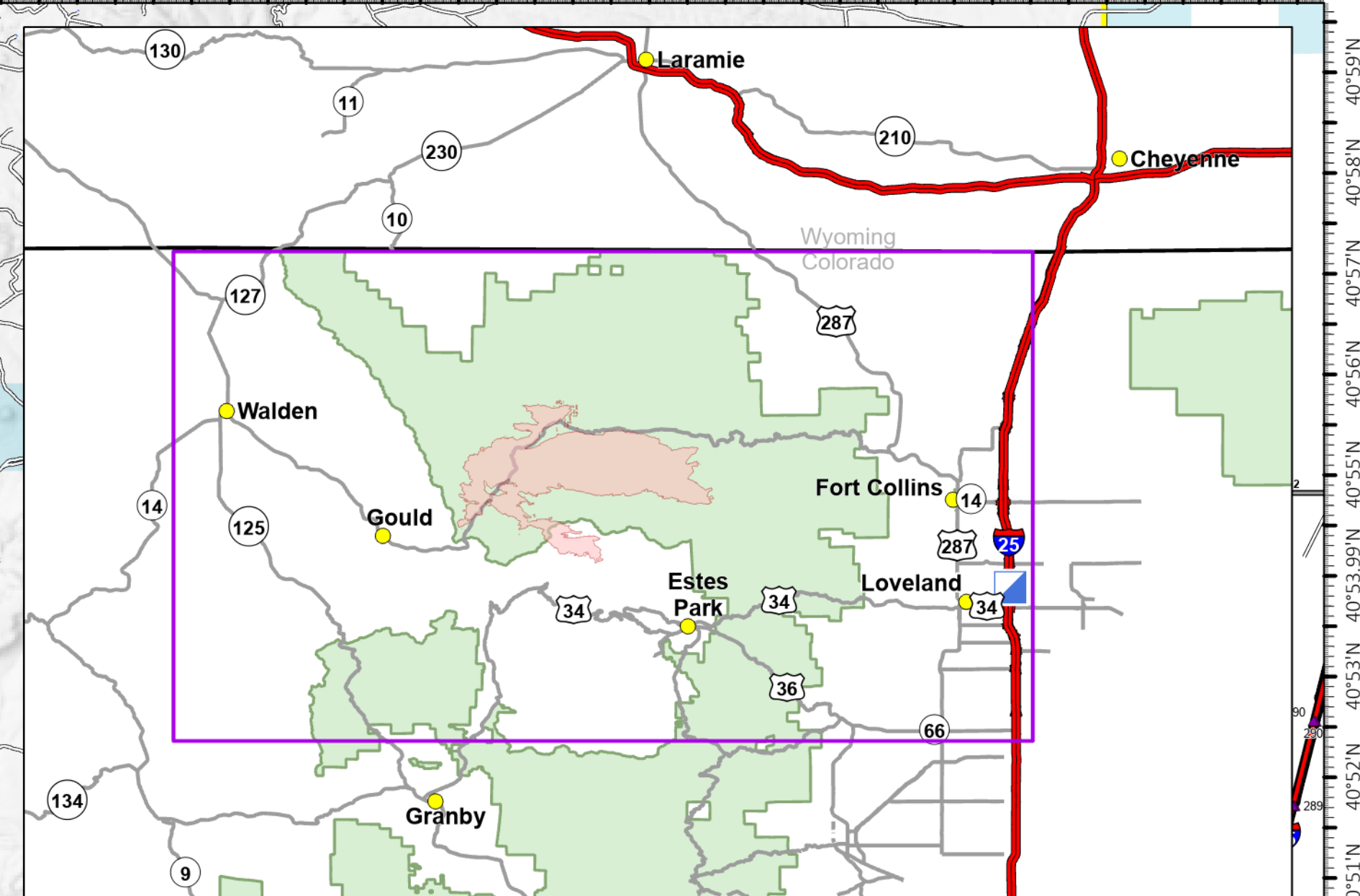


Transportation

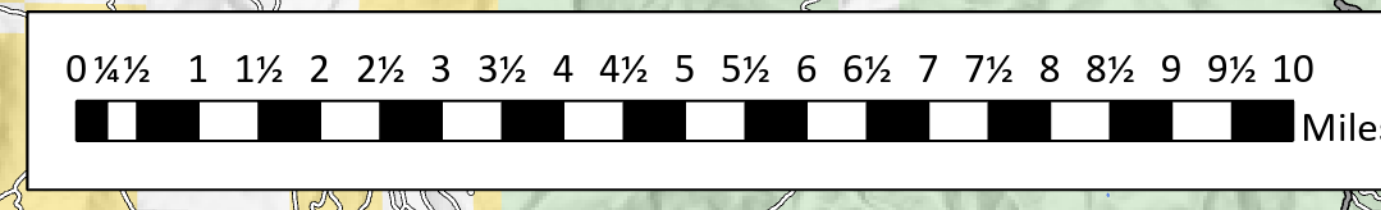
Cameron Peak
CO-ARF-000636
9/13/2020

102,596 acres at 9/7/20 @ 1940

- | | |
|---------------------------------|----------------------------------|
| Bridge | Branch Break |
| Camp | Uncontrolled Fire Edge |
| Closure | Contained Line |
| Dip Site | Completed Dozer Line |
| Drop Point | Completed Hand Line |
| Fence - Cut/Damaged | Road as Completed Line |
| Fire Station | Access or Improved Road |
| Gate | Line Break Completed |
| Hazard | Completed Plow Line |
| Helibase | Proposed Dozer Line |
| Unimproved Landing Area | Fire Break Planned or Incomplete |
| Helispot | Planned Fire Line |
| Incident Command Post | Temporary Flight Restriction |
| Internet Access | Wildfire Daily Fire Perimeter |
| Lookout | US or State Highway |
| Mobile Weather Unit | Primary or County Road |
| Repeater | Arterial or Collector Road |
| Resource Location | Minor or Local Road |
| Retardant/Mud Pit | Highway Mile Marker |
| Safety Zone | County Boundary |
| Sling Site | Forest Service |
| Staging Area | Bureau of Land Management |
| Stream Crossing | Private |
| Water Source | State, County, City; Areas |
| Water Development or Draft Site | State |
| Value at Risk | |
| Other | |
| Division Break | |



NARROW ROAD
TIGHT SWITCHBACKS
HIGH CLEARANCE
4WD ONLY



SOUTHWEST AREA
INCIDENT MANAGEMENT TEAM 3

9/12/2020 2238
Acres from IR and MMA
North American 1983 Datum,
LatLong Grid