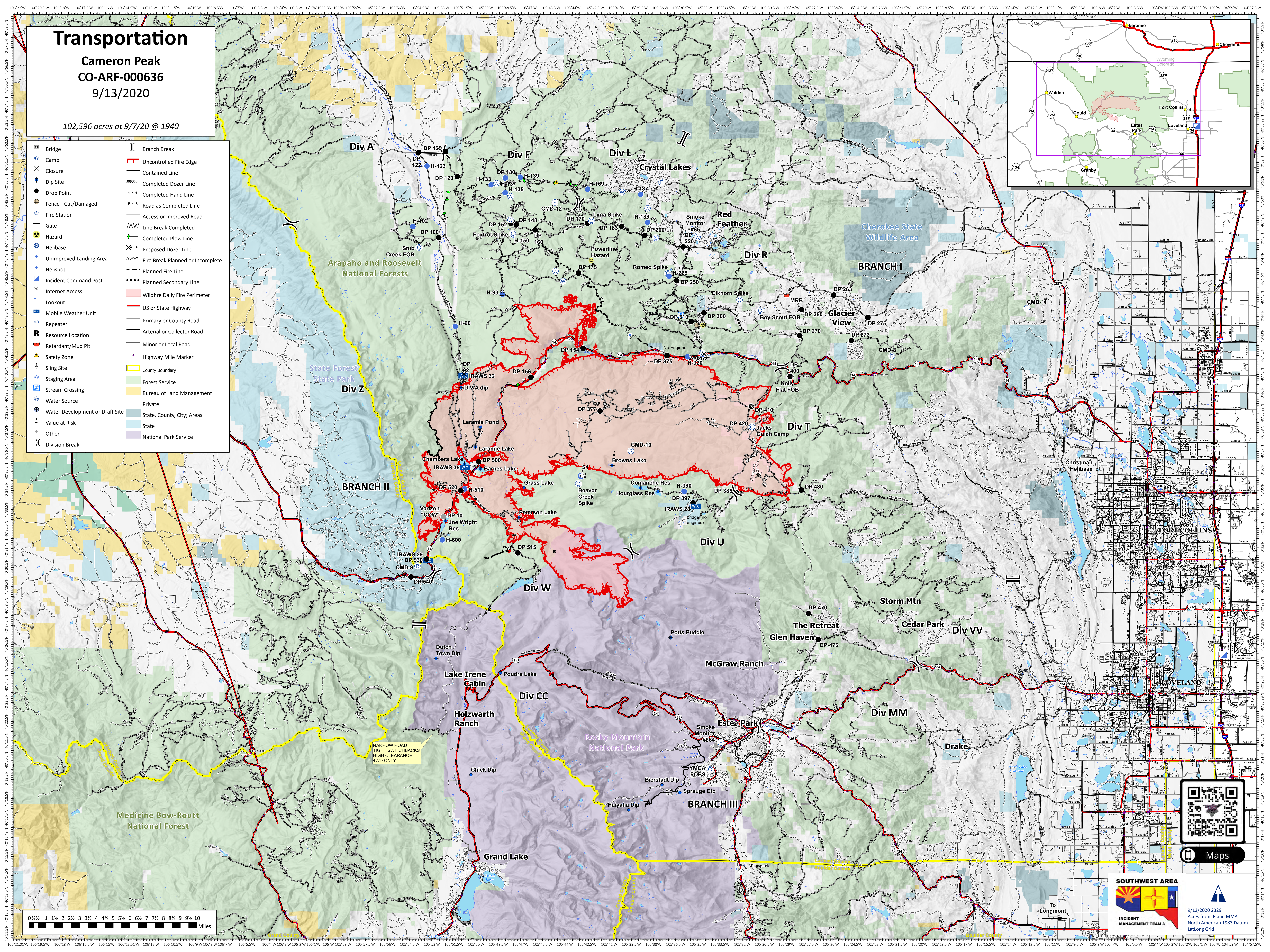
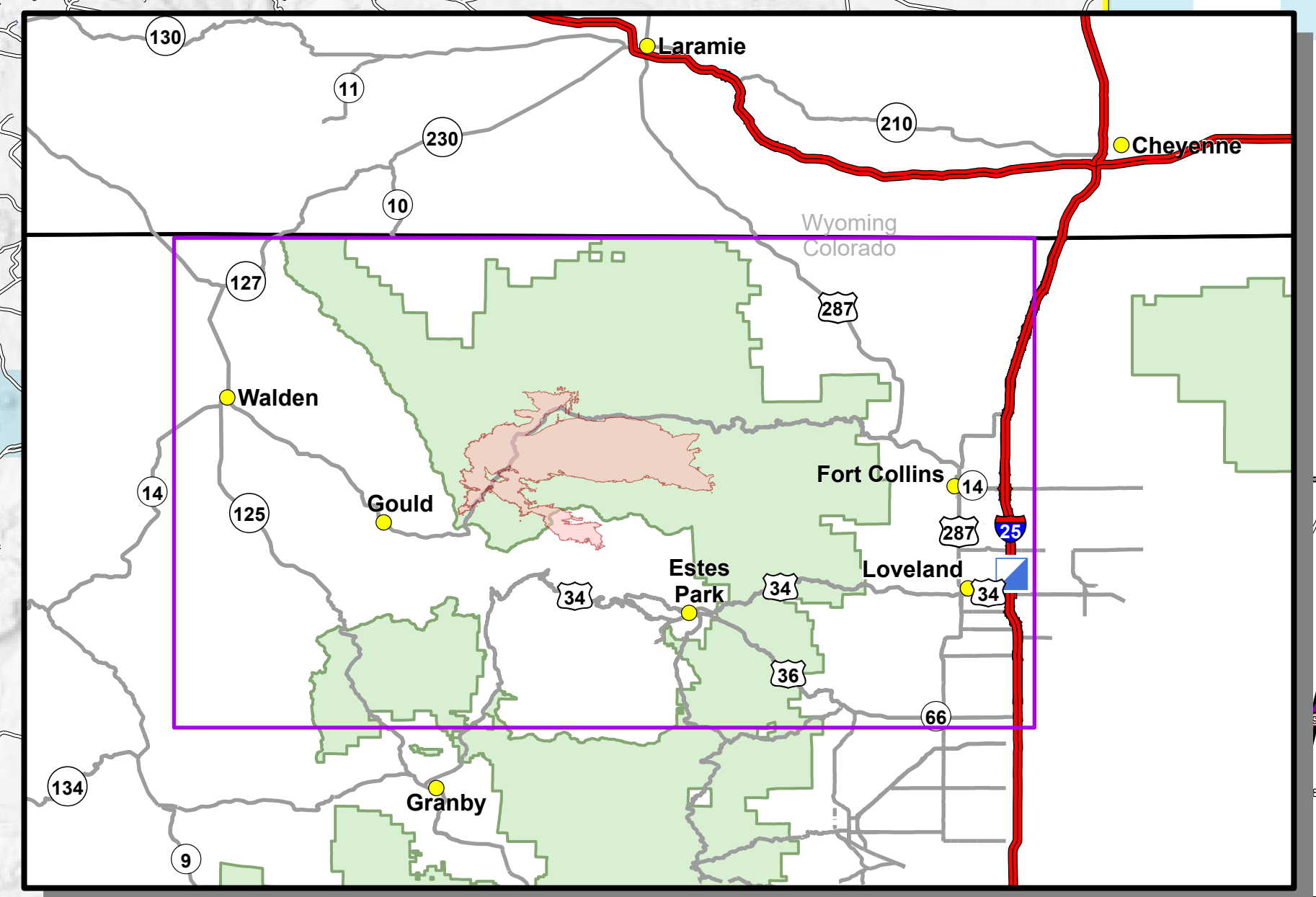


Transportation

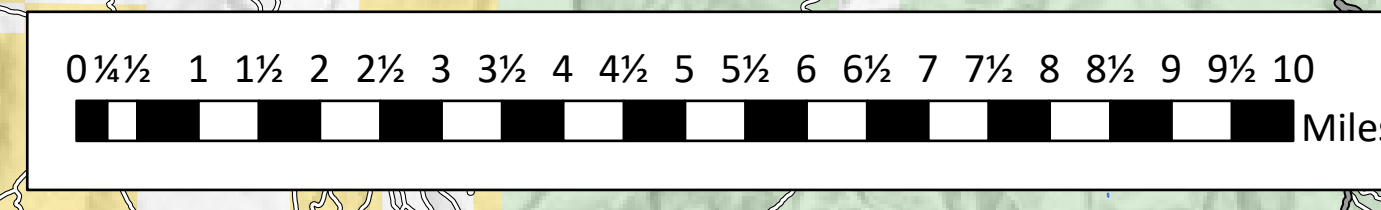
Cameron Peak
CO-ARF-000636
9/13/2020

102,596 acres at 9/7/20 @ 1940

- | | | | |
|--|---------------------------------|--|----------------------------------|
| | Bridge | | Branch Break |
| | Camp | | Uncontrolled Fire Edge |
| | Closure | | Contained Line |
| | Dip Site | | Completed Dozer Line |
| | Drop Point | | Completed Hand Line |
| | Fence - Cut/Damaged | | Road as Completed Line |
| | Fire Station | | Access or Improved Road |
| | Gate | | Line Break Completed |
| | Hazard | | Completed Plow Line |
| | Helibase | | Proposed Dozer Line |
| | Unimproved Landing Area | | Fire Break Planned or Incomplete |
| | Helispot | | Planned Fire Line |
| | Incident Command Post | | Planned Secondary Line |
| | Internet Access | | Wildfire Daily Fire Perimeter |
| | Lookout | | US or State Highway |
| | Mobile Weather Unit | | Primary or County Road |
| | Repeater | | Arterial or Collector Road |
| | Resource Location | | Minor or Local Road |
| | Retardant/Mud Pit | | Highway Mile Marker |
| | Safety Zone | | County Boundary |
| | Sling Site | | Forest Service |
| | Staging Area | | Bureau of Land Management |
| | Stream Crossing | | Private |
| | Water Source | | State, County, City, Areas |
| | Water Development or Draft Site | | State |
| | Value at Risk | | National Park Service |
| | Other | | |
| | Division Break | | |



NARROW ROAD
TIGHT SWITCHBACKS
HIGH CLEARANCE
4WD ONLY



SOUTHWEST AREA
INCIDENT MANAGEMENT TEAM 3

9/12/2020 2329
Acres from IR and MMA
North American 1983 Datum,
LatLong Grid