

# Div U Cameron Peak CO-ARF-000636

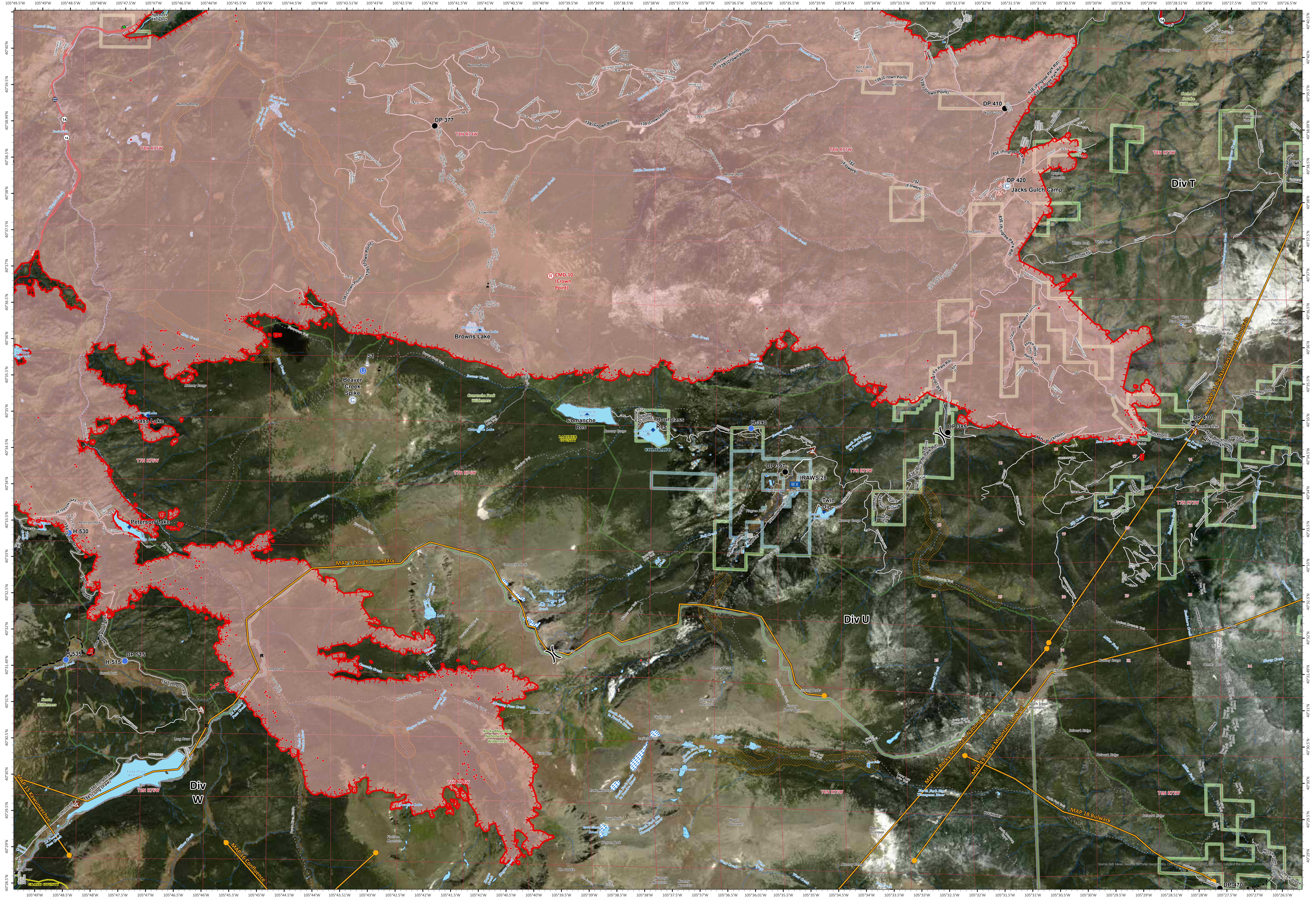
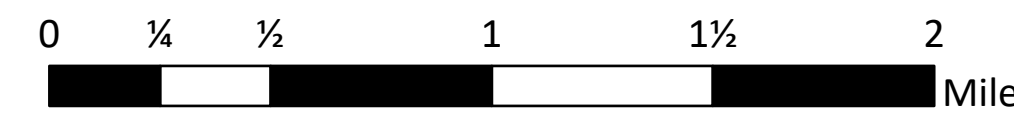
102,596 acres at 9/7/20 @ 1940

- Red Repeater
- Isolated heat from MMA, 9/13/20 1538
- 0
- Label\_Point
- Bridge
- Camp
- Dip Site
- Drop Point
- Unimproved Landing Area
- Helispot
- Internet Access
- Mobile Weather Unit
- Resource Location
- Sling Site
- Water Development or Draft Site
- Value at Risk
- Division Break
- Uncontrolled Fire Edge
- Completed Hand Line
- Proposed Dozer Line
- Planned Fire Line
- Planned Secondary Line
- Management Action Point
- Wildfire Daily Fire Perimeter
- Place Name
- Fire Station
- Primary Routes
- Access or Improved Road
- Completed PLOW Line
- Proposed Dozer Line
- Planned Fire Line
- Planned Secondary Line
- State Highway
- Highway or ramp
- Local or 4WD road
- Trail
- Spring
- Waterfall
- Pipeline
- Perennial Stream
- Non-Perennial Stream
- Canal/Ditch
- Wash
- Designated Wilderness
- State or Territory
- County Line
- Highway or ramp
- Local or 4WD road
- Trail
- Spring
- Waterfall
- Pipeline
- Perennial Stream
- Non-Perennial Stream
- Canal/Ditch
- Wash
- 600R Retardant Avoidance
- Fire Station
- Highway or ramp
- Local or 4WD road
- Trail
- Spring
- Waterfall
- Pipeline
- Perennial Stream
- Non-Perennial Stream
- Canal/Ditch
- Wash
- Perennial Lake
- State or Territory
- Section
- Forest Service
- Private
- State
- National Park Service (Rocky Mtn National Park)



Southwest IMT 3  
9/13/2020 2227  
Acres from IR and MMA  
North American 1983 Datum, LatLong Grid

9/14/2020



105°49.5'W 105°48.5'W 105°47.5'W 105°46.5'W 105°45.5'W 105°44.5'W 105°43.5'W 105°42.5'W 105°41.5'W 105°40.5'W 105°39.5'W 105°38.5'W 105°37.5'W 105°36.5'W 105°35.5'W 105°34.5'W 105°33.5'W 105°32.5'W 105°31.5'W 105°30.5'W 105°29.5'W 105°28.5'W 105°27.5'W 105°26.5'W