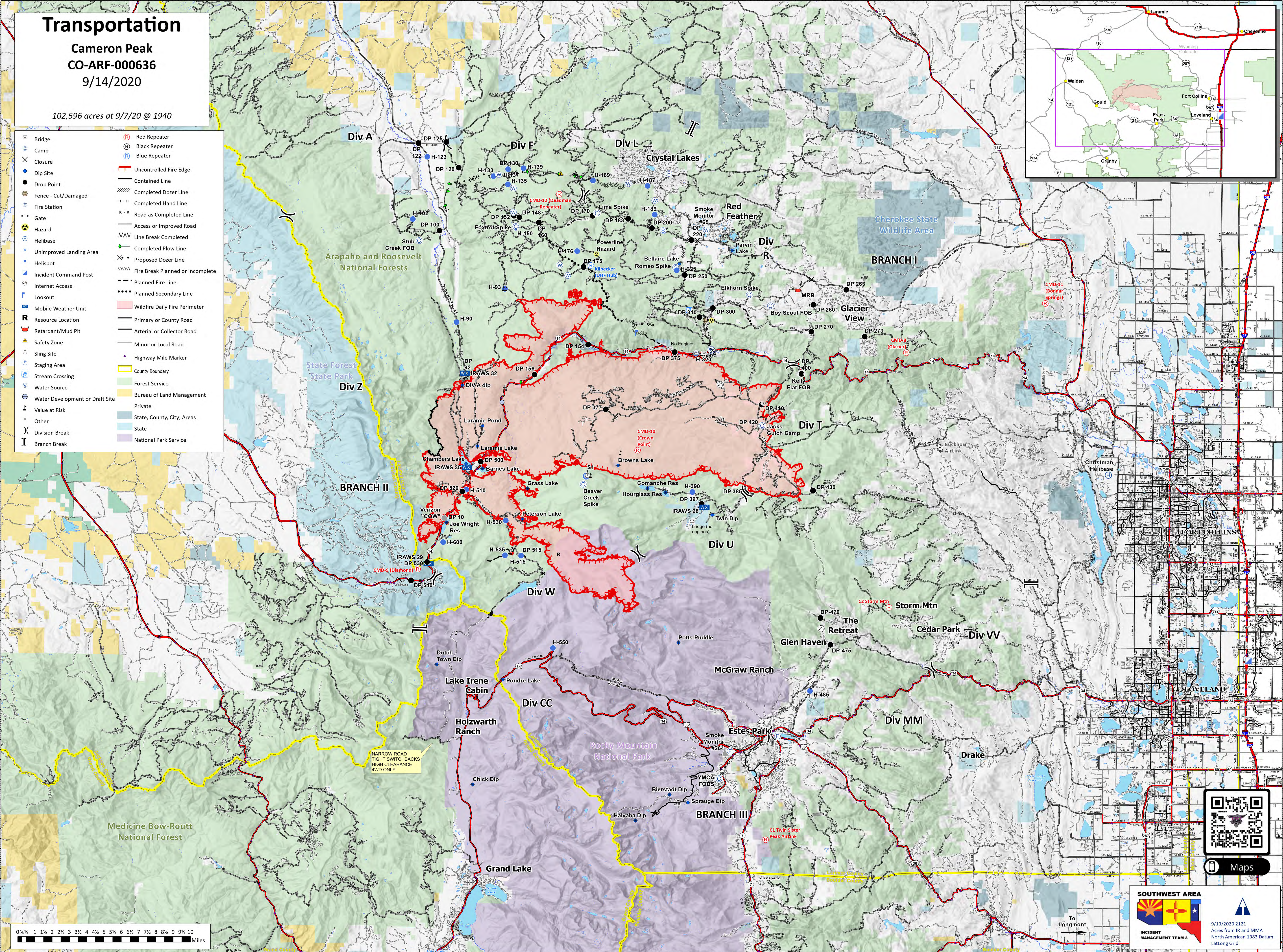
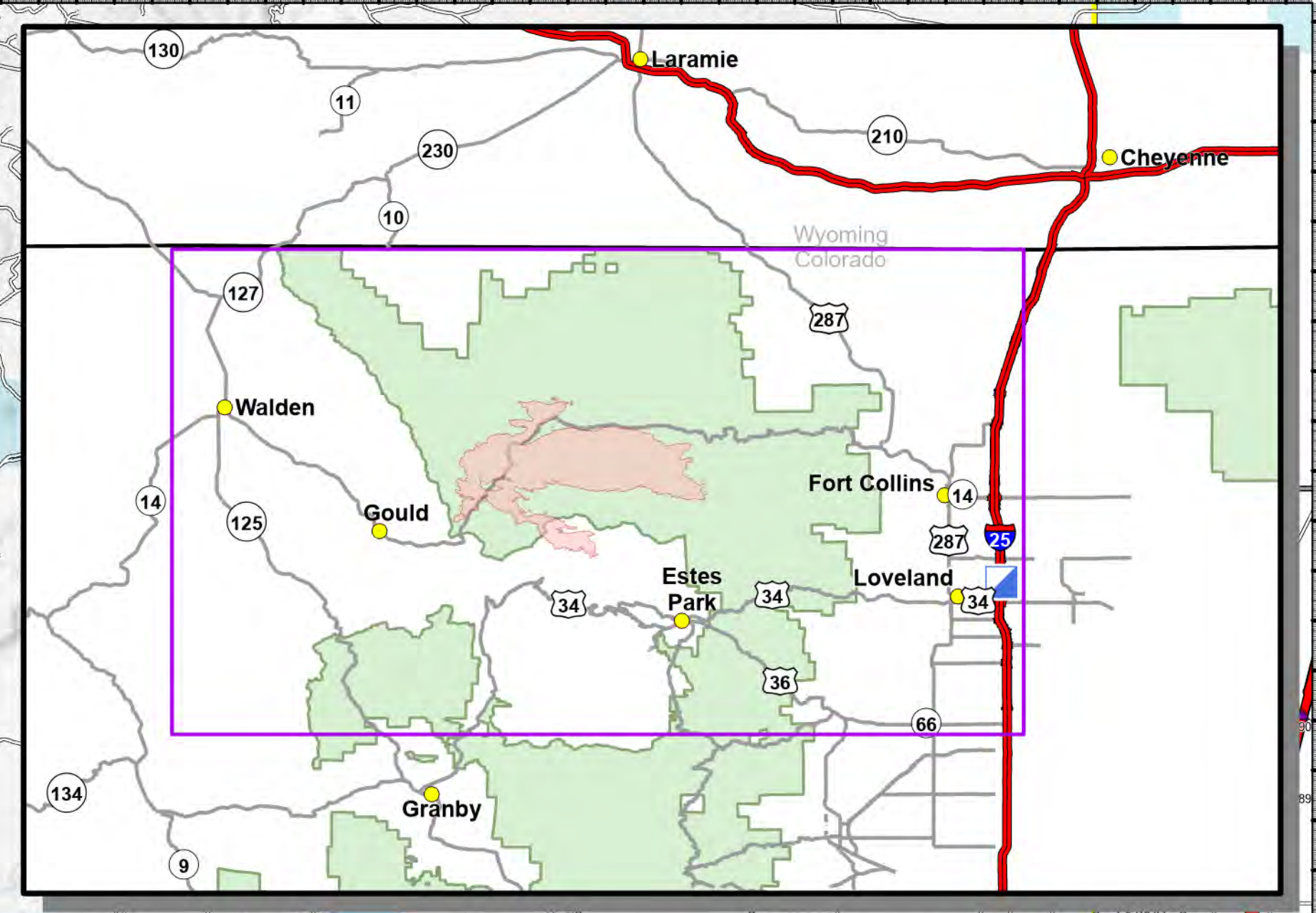


# Transportation

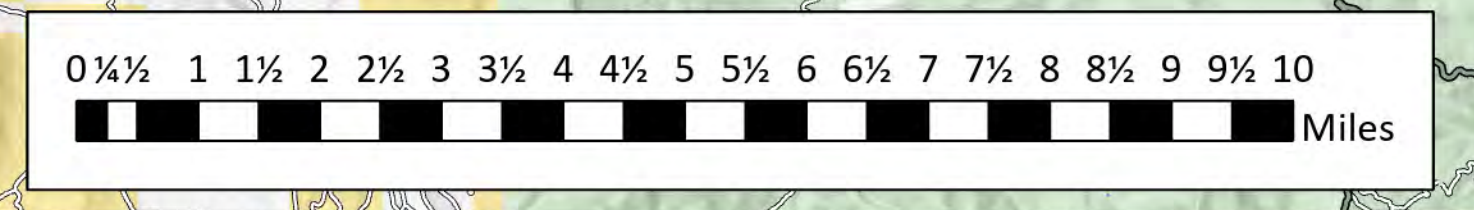
Cameron Peak  
CO-ARF-000636  
9/14/2020

102,596 acres at 9/7/20 @ 1940

- |                                 |                                  |
|---------------------------------|----------------------------------|
| Bridge                          | Red Repeater                     |
| Camp                            | Black Repeater                   |
| Closure                         | Blue Repeater                    |
| Dip Site                        | Uncontrolled Fire Edge           |
| Drop Point                      | Contained Line                   |
| Fence - Cut/Damaged             | Completed Dozer Line             |
| Fire Station                    | Completed Hand Line              |
| Gate                            | Road as Completed Line           |
| Hazard                          | Access or Improved Road          |
| Helibase                        | Line Break Completed             |
| Unimproved Landing Area         | Completed Plow Line              |
| Helispot                        | Proposed Dozer Line              |
| Incident Command Post           | Fire Break Planned or Incomplete |
| Internet Access                 | Planned Fire Line                |
| Lookout                         | Planned Secondary Line           |
| Mobile Weather Unit             | Wildfire Daily Fire Perimeter    |
| Resource Location               | Primary or County Road           |
| Retardant/Mud Pit               | Arterial or Collector Road       |
| Safety Zone                     | Minor or Local Road              |
| Sling Site                      | Highway Mile Marker              |
| Staging Area                    | County Boundary                  |
| Stream Crossing                 | Forest Service                   |
| Water Source                    | Bureau of Land Management        |
| Water Development or Draft Site | Private                          |
| Value at Risk                   | State, County, City, Areas       |
| Other                           | State                            |
| Division Break                  | National Park Service            |
| Branch Break                    |                                  |



NARROW ROAD  
TIGHT SWITCHBACKS  
HIGH CLEARANCE  
4WD ONLY



**SOUTHWEST AREA**  
INCIDENT MANAGEMENT TEAM 3

9/13/2020 2121  
Acres from IR and MMA  
North American 1983 Datum,  
LatLong Grid

