

Medical Ground Transportation

Cameron Peak
CO-ARF-000636

9/15/2020

102,596 acres at 9/7/20 @ 1940

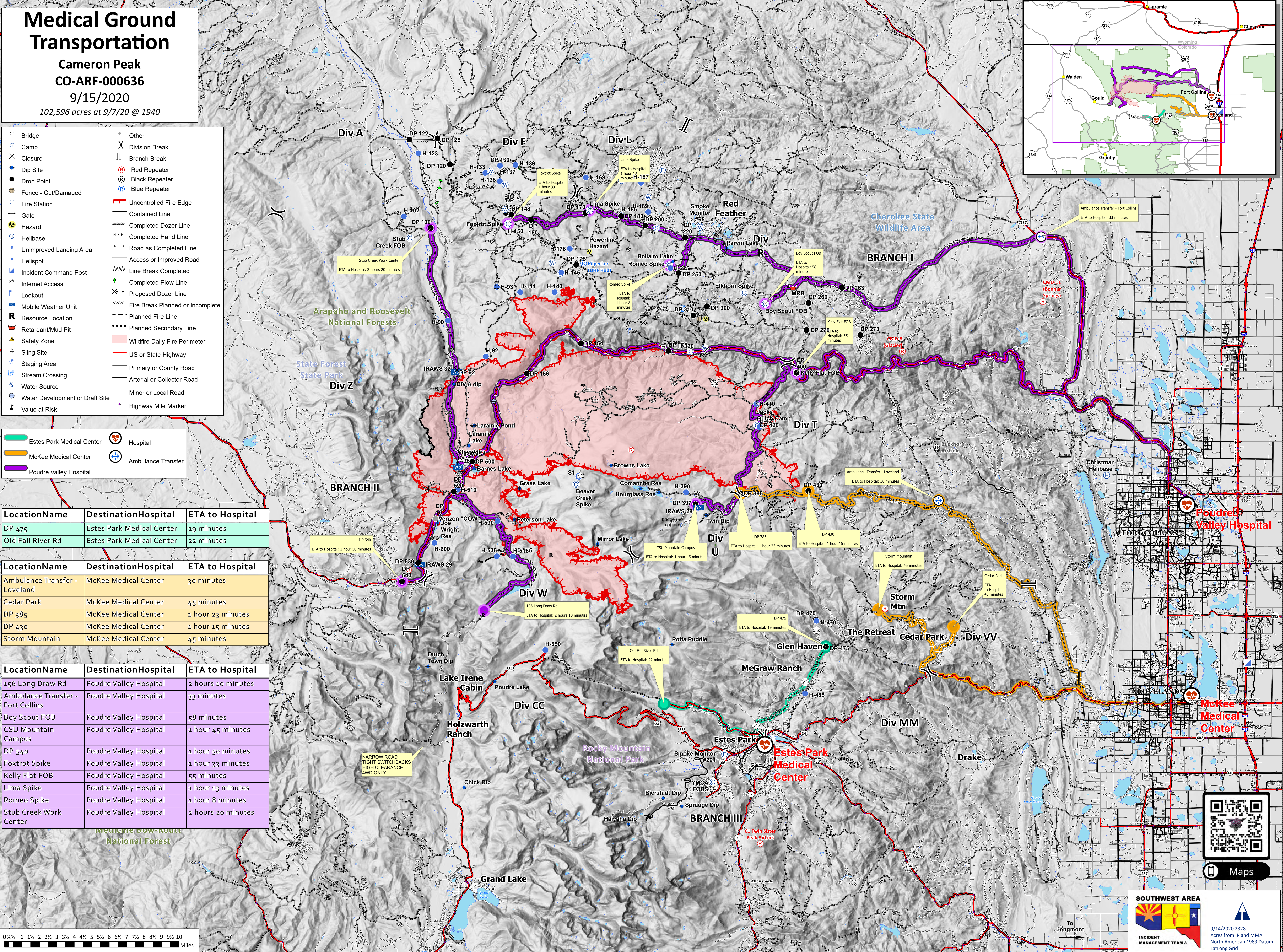
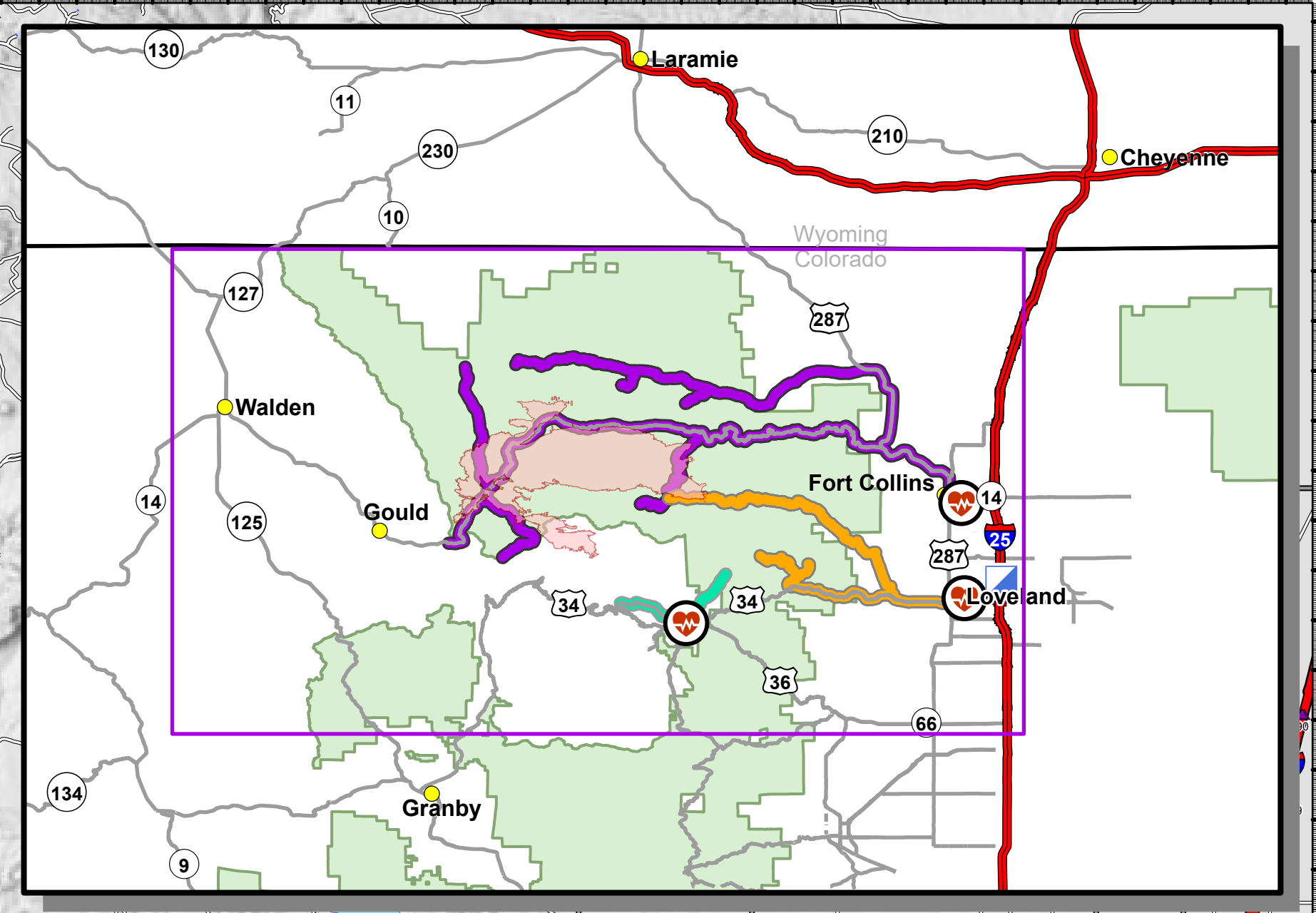
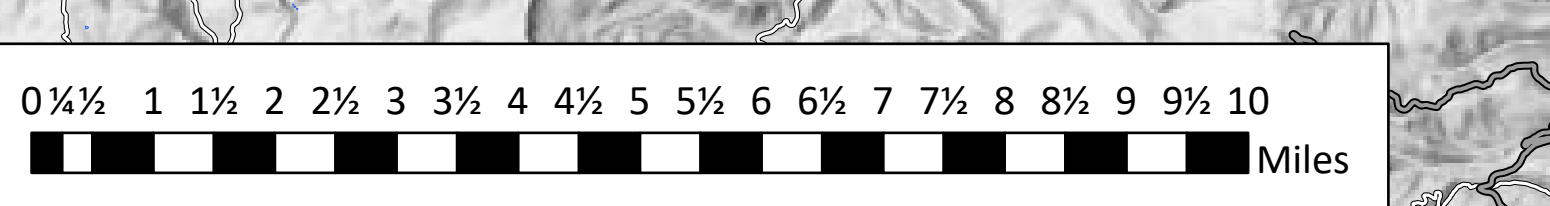
- Bridge
- Camp
- Closure
- Dip Site
- Drop Point
- Fence - Cut/Damaged
- Fire Station
- Gate
- Hazard
- Helibase
- Unimproved Landing Area
- Helispot
- Incident Command Post
- Internet Access
- Lookout
- Mobile Weather Unit
- Resource Location
- Retardant/Mud Pit
- Safety Zone
- Sling Site
- Staging Area
- Stream Crossing
- Water Source
- Water Development or Draft Site
- Value at Risk
- Other
- Division Break
- Branch Break
- Red Repeater
- Black Repeater
- Blue Repeater
- Uncontrolled Fire Edge
- Contained Line
- Completed Dozer Line
- Completed Hand Line
- Road as Completed Line
- Access or Improved Road
- Line Break Completed
- Completed Plow Line
- Proposed Dozer Line
- Fire Break Planned or Incomplete
- Planned Fire Line
- Planned Secondary Line
- Wildfire Daily Fire Perimeter
- US or State Highway
- Primary or County Road
- Arterial or Collector Road
- Minor or Local Road
- Highway Mile Marker

- Estes Park Medical Center
- McKee Medical Center
- Poudre Valley Hospital
- Hospital
- Ambulance Transfer

LocationName	DestinationHospital	ETA to Hospital
DP 475	Estes Park Medical Center	19 minutes
Old Fall River Rd	Estes Park Medical Center	22 minutes

LocationName	DestinationHospital	ETA to Hospital
Ambulance Transfer - Loveland	McKee Medical Center	30 minutes
Cedar Park	McKee Medical Center	45 minutes
DP 385	McKee Medical Center	1 hour 23 minutes
DP 430	McKee Medical Center	1 hour 15 minutes
Storm Mountain	McKee Medical Center	45 minutes

LocationName	DestinationHospital	ETA to Hospital
156 Long Draw Rd	Poudre Valley Hospital	2 hours 10 minutes
Ambulance Transfer - Fort Collins	Poudre Valley Hospital	33 minutes
Boy Scout FOB	Poudre Valley Hospital	58 minutes
CSU Mountain Campus	Poudre Valley Hospital	1 hour 45 minutes
DP 540	Poudre Valley Hospital	1 hour 50 minutes
Foxtrot Spike	Poudre Valley Hospital	1 hour 33 minutes
Kelly Flat FOB	Poudre Valley Hospital	55 minutes
Lima Spike	Poudre Valley Hospital	1 hour 13 minutes
Romeo Spike	Poudre Valley Hospital	1 hour 8 minutes
Stub Creek Work Center	Poudre Valley Hospital	2 hours 20 minutes



Maps

SOUTHWEST AREA
INCIDENT MANAGEMENT TEAM 3

9/14/2020 2328
Acres from IR and MMA
North American 1983 Datum,
LatLong Grid