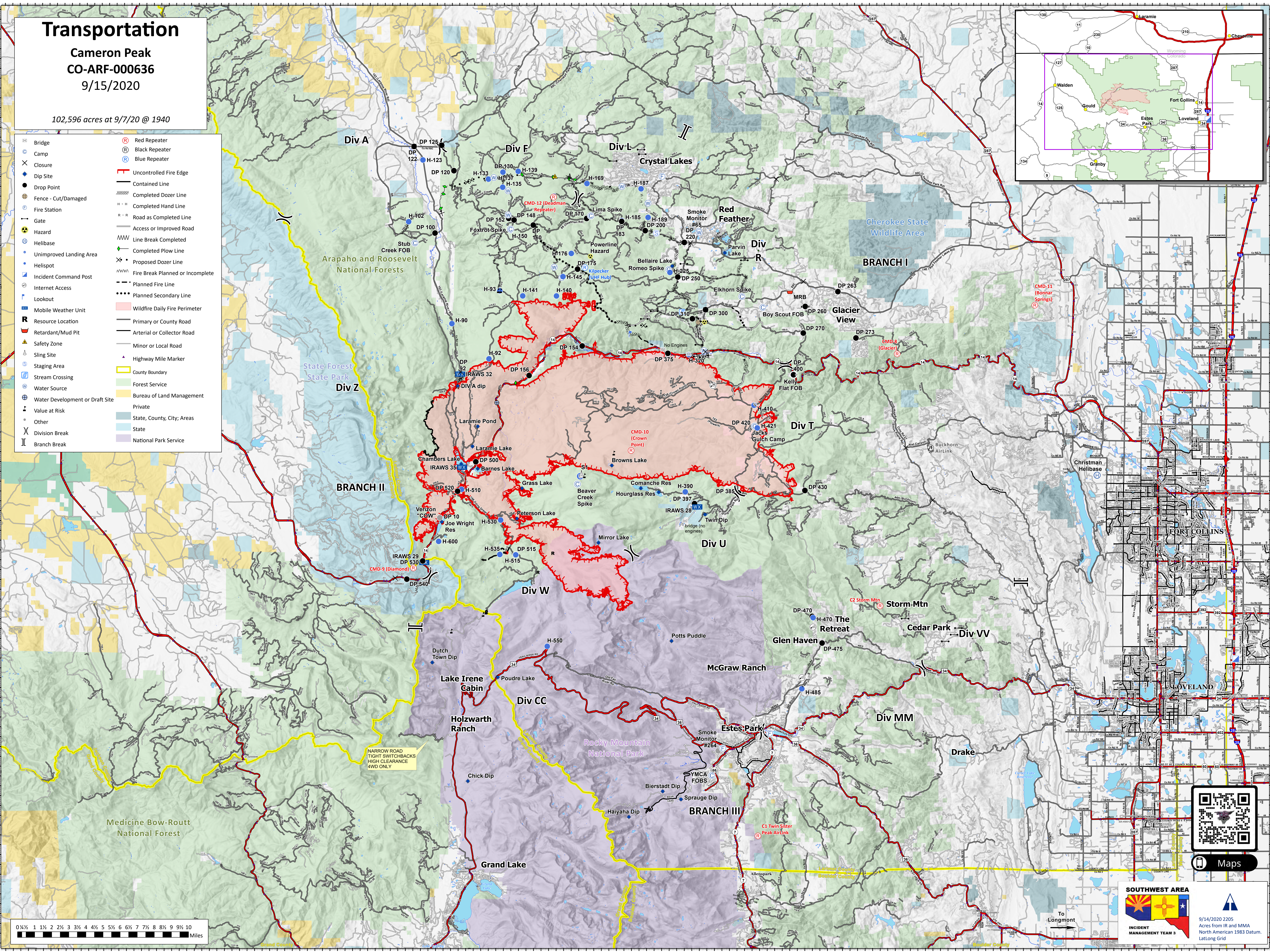
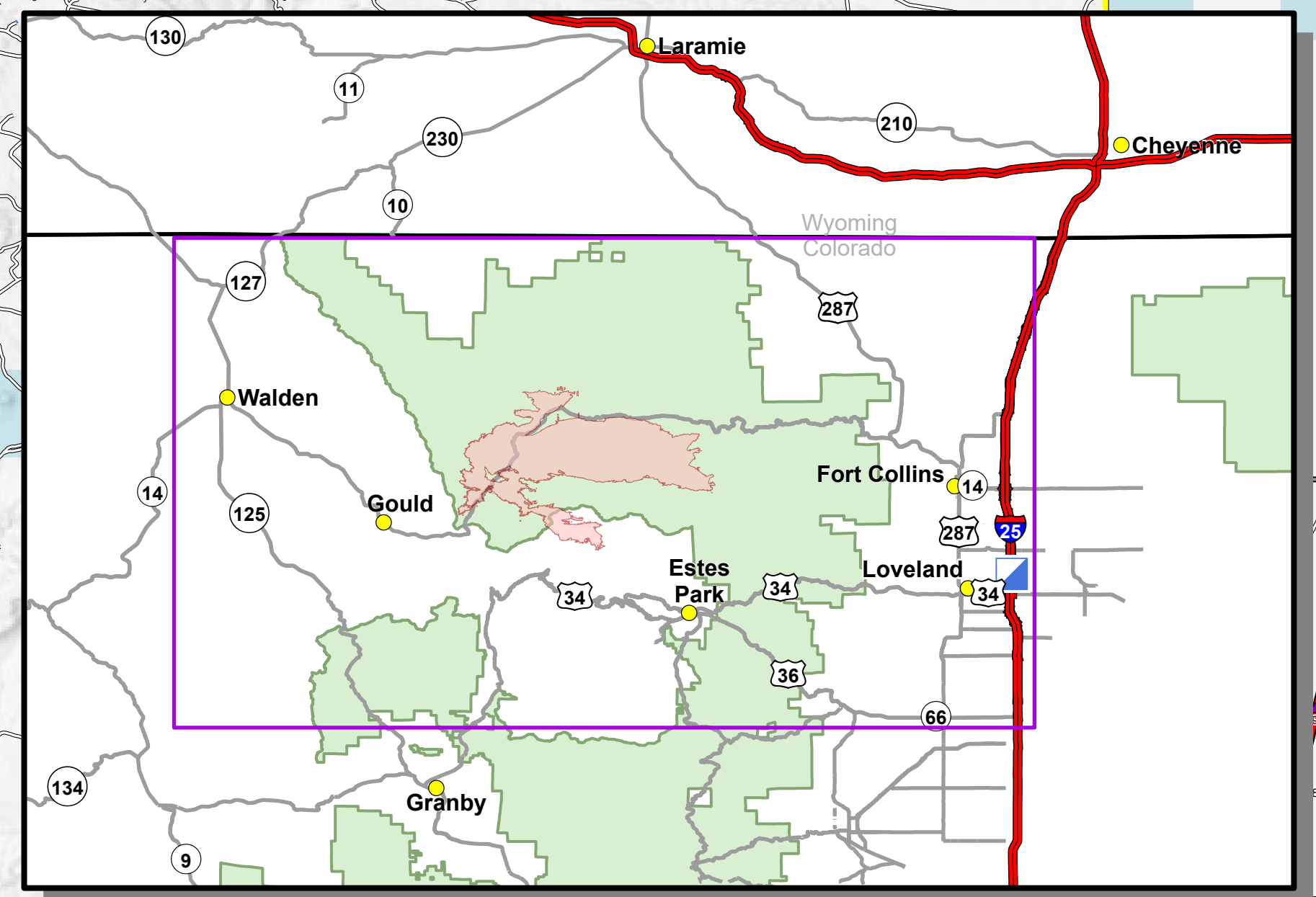


Transportation

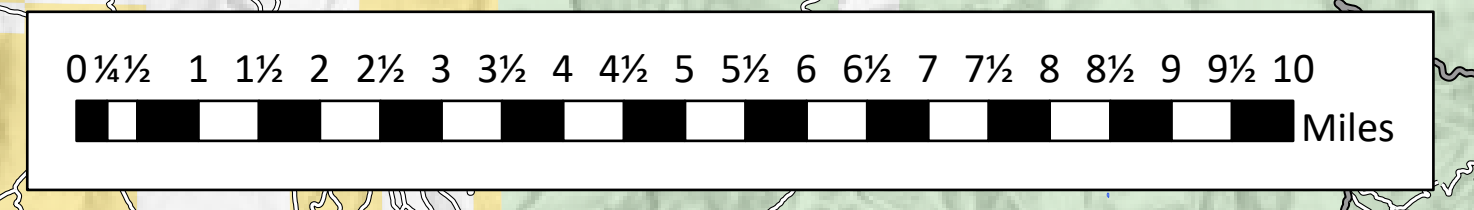
Cameron Peak
CO-ARF-000636
9/15/2020

102,596 acres at 9/7/20 @ 1940

- | | |
|---------------------------------|----------------------------------|
| Bridge | Red Repeater |
| Camp | Black Repeater |
| Closure | Blue Repeater |
| Dip Site | Uncontrolled Fire Edge |
| Drop Point | Contained Line |
| Fence - Cut/Damaged | Completed Dozer Line |
| Fire Station | Completed Hand Line |
| Gate | Road as Completed Line |
| Hazard | Access or Improved Road |
| Helibase | Line Break Completed |
| Unimproved Landing Area | Completed Plow Line |
| Helispot | Proposed Dozer Line |
| Incident Command Post | Fire Break Planned or Incomplete |
| Internet Access | Planned Fire Line |
| Lookout | Planned Secondary Line |
| Mobile Weather Unit | Wildfire Daily Fire Perimeter |
| Resource Location | Primary or County Road |
| Retardant/Mud Pit | Arterial or Collector Road |
| Safety Zone | Minor or Local Road |
| Sling Site | Highway Mile Marker |
| Staging Area | County Boundary |
| Stream Crossing | Forest Service |
| Water Source | Bureau of Land Management |
| Water Development or Draft Site | Private |
| Value at Risk | State, County, City, Areas |
| Other | State |
| Division Break | National Park Service |
| Branch Break | |



NARROW ROAD
TIGHT SWITCHBACKS
HIGH CLEARANCE
4WD ONLY



SOUTHWEST AREA
INCIDENT MANAGEMENT TEAM 3

9/14/2020 2205
Acres from IR and MMA
North American 1983 Datum,
LatLong Grid

To Longmont