

# Briefing

## Cameron Peak

CO-ARF-000636

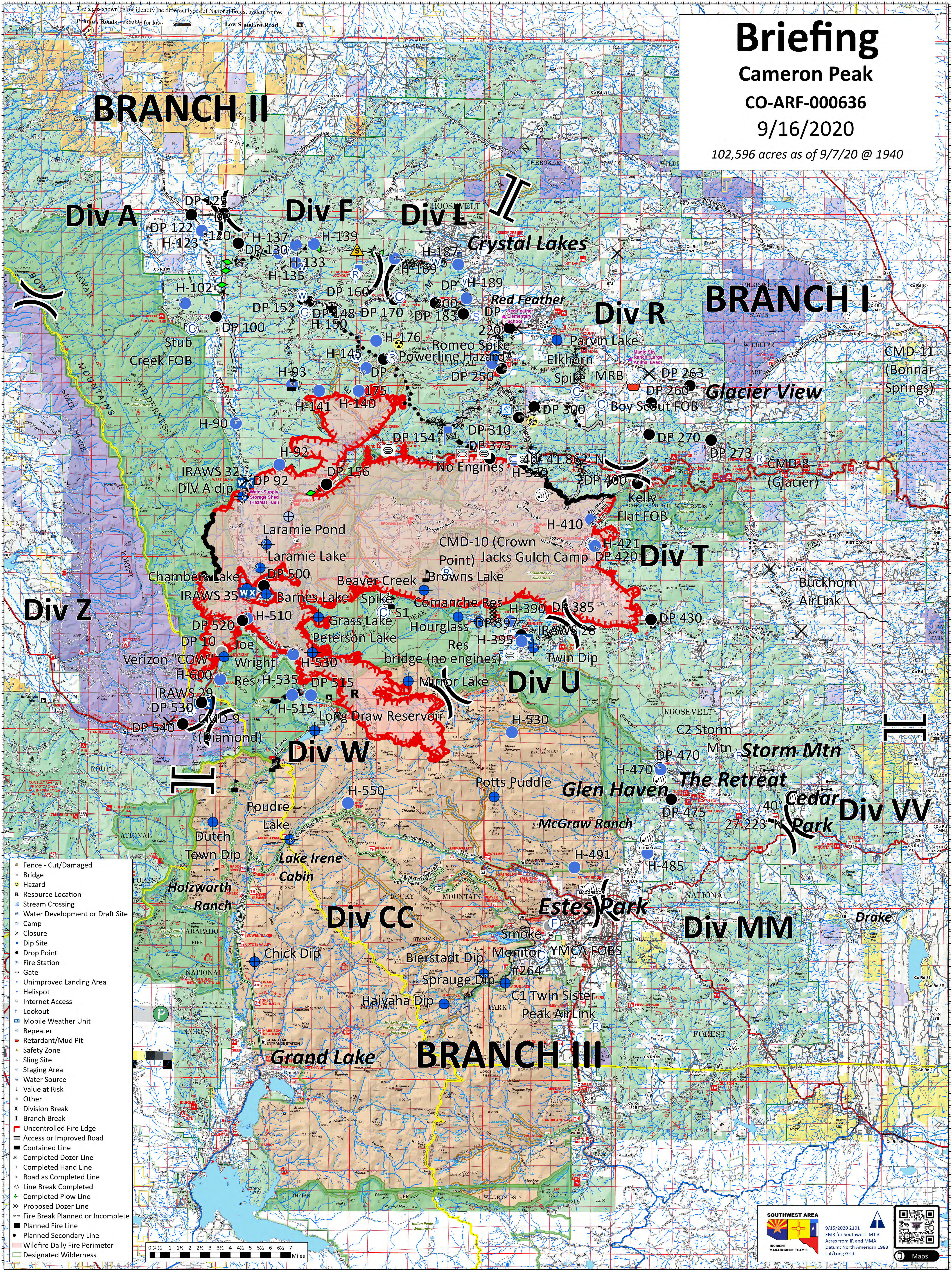
9/16/2020

102,596 acres as of 9/7/20 @ 1940

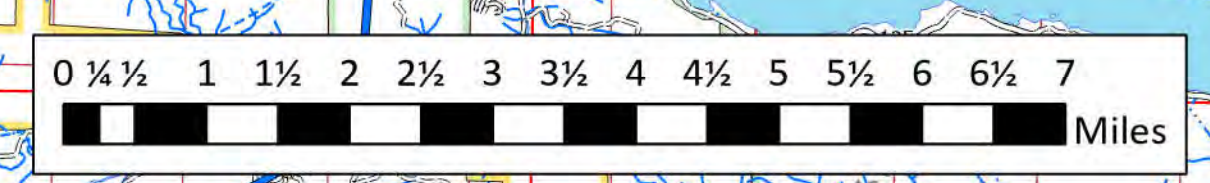
# BRANCH II

# BRANCH I

# BRANCH III



- Fence - Cut/Damaged
- Bridge
- Hazard
- Resource Location
- Stream Crossing
- Water Development or Draft Site
- Camp
- Closure
- Dip Site
- Drop Point
- Fire Station
- Gate
- Unimproved Landing Area
- Helispot
- Internet Access
- Lookout
- Mobile Weather Unit
- Repeater
- Retardant/Mud Pit
- Safety Zone
- Sling Site
- Staging Area
- Water Source
- Value at Risk
- Other
- Division Break
- Branch Break
- Uncontrolled Fire Edge
- Access or Improved Road
- Completed Dozer Line
- Completed Hand Line
- Road as Completed Line
- Line Break Completed
- Completed PLOW Line
- Proposed Dozer Line
- Fire Break Planned or Incomplete
- Planned Fire Line
- Planned Secondary Line
- Wildfire Daily Fire Perimeter
- Designated Wilderness



**SOUTHWEST AREA**  
EMR for Southwest IMT 3  
Acres from IR and MMA  
Datum: North American 1983  
Lat/Long Grid