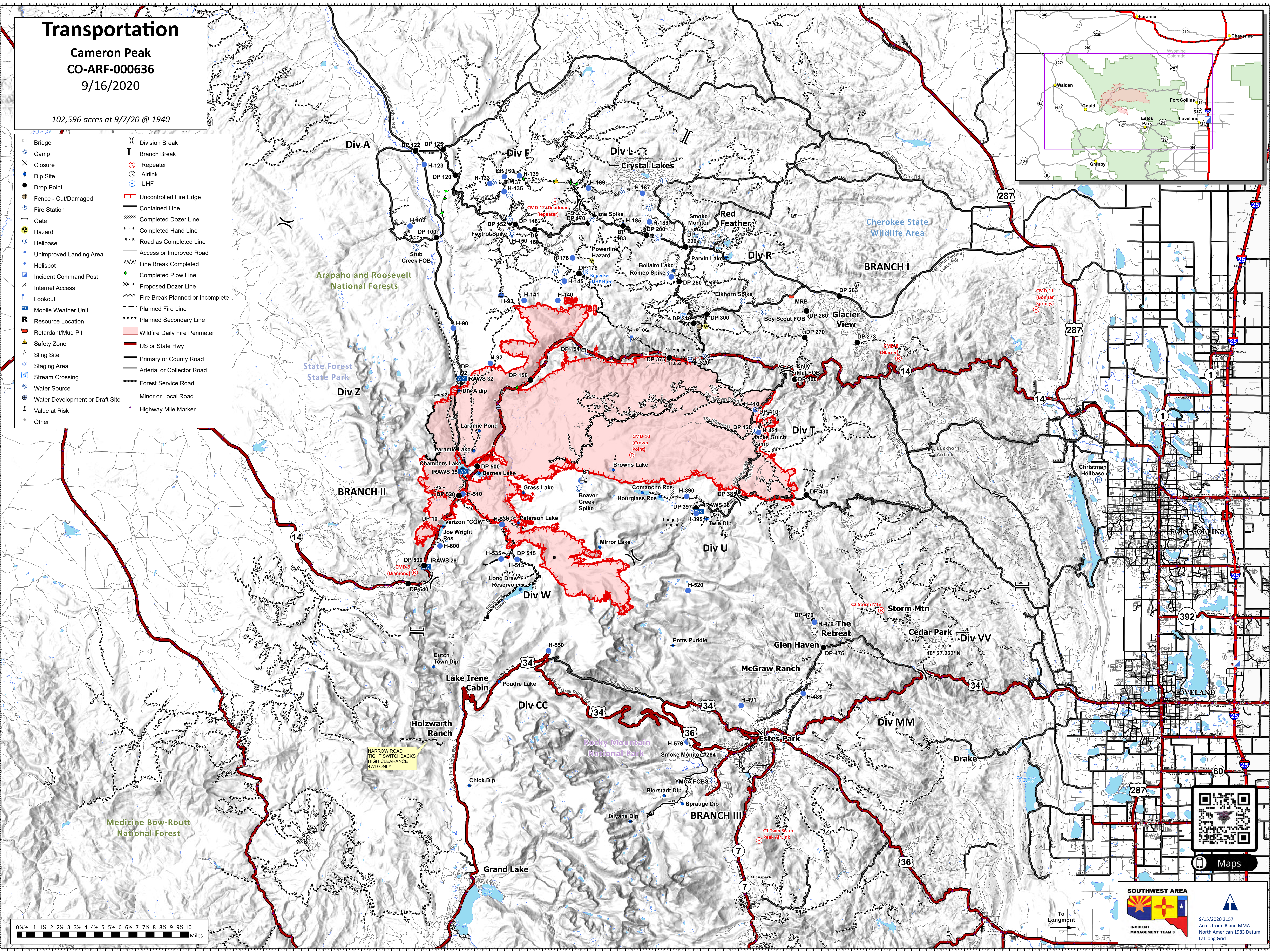
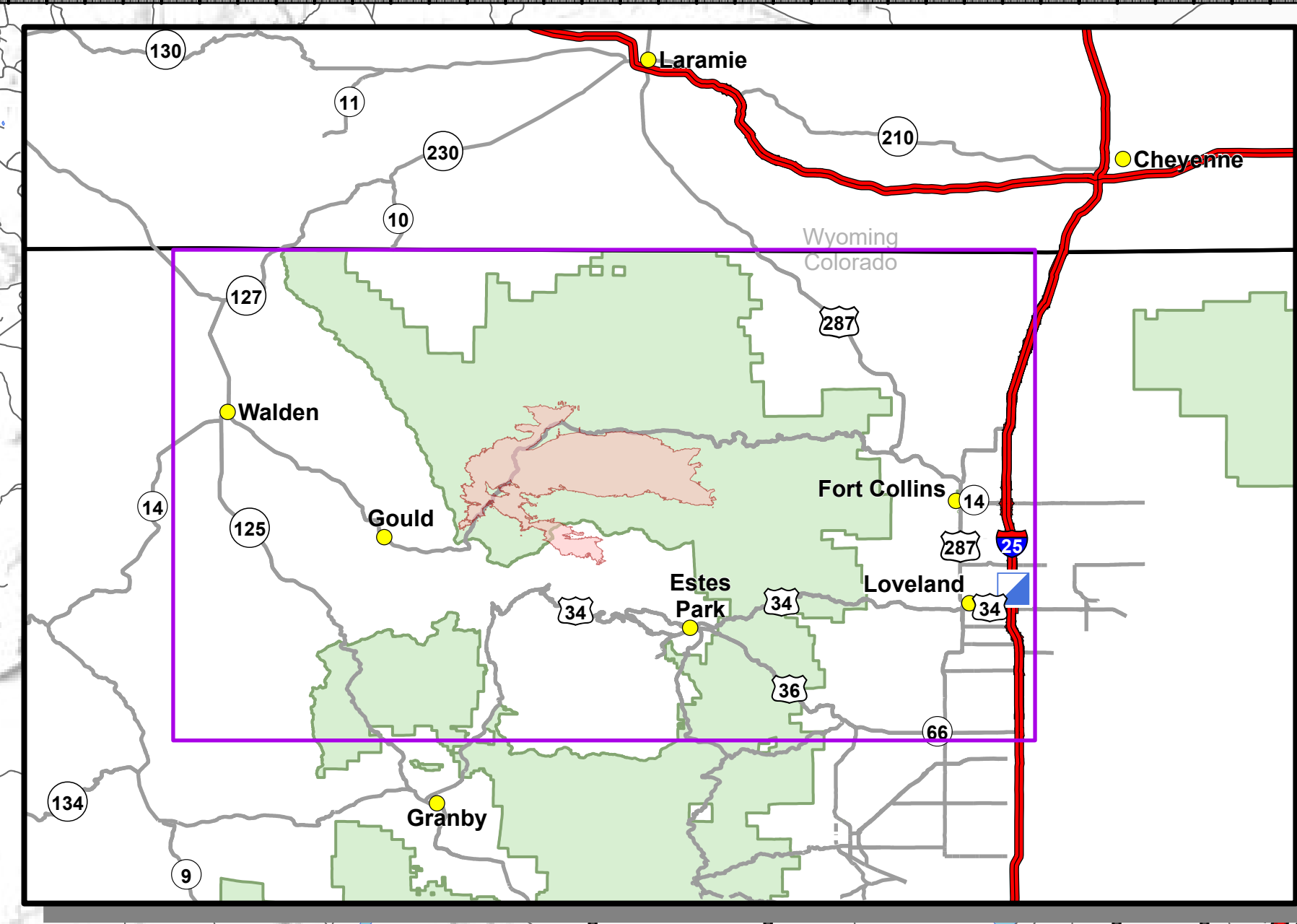


Transportation

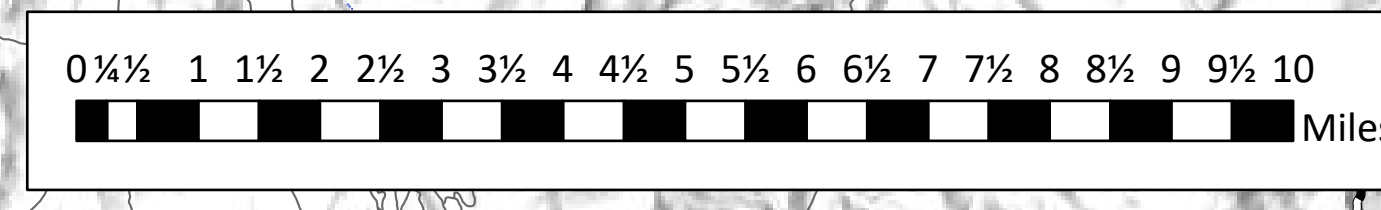
Cameron Peak
CO-ARF-000636
9/16/2020

102,596 acres at 9/7/20 @ 1940

- | | |
|---------------------------------|----------------------------------|
| Bridge | Division Break |
| Camp | Branch Break |
| Closure | Repeater |
| Dip Site | Airlink |
| Drop Point | UHF |
| Fence - Cut/Damaged | Uncontrolled Fire Edge |
| Fire Station | Contained Line |
| Gate | Completed Dozer Line |
| Hazard | Completed Hand Line |
| Helibase | Road as Completed Line |
| Unimproved Landing Area | Access or Improved Road |
| Helispot | Line Break Completed |
| Incident Command Post | Completed Plow Line |
| Internet Access | Proposed Dozer Line |
| Lookout | Fire Break Planned or Incomplete |
| Mobile Weather Unit | Planned Fire Line |
| Resource Location | Planned Secondary Line |
| Retardant/Mud Pit | Wildfire Daily Fire Perimeter |
| Safety Zone | US or State Hwy |
| Sling Site | Primary or County Road |
| Staging Area | Arterial or Collector Road |
| Stream Crossing | Forest Service Road |
| Water Source | Minor or Local Road |
| Water Development or Draft Site | Highway Mile Marker |
| Value at Risk | Other |



NARROW ROAD
TIGHT SWITCHBACKS
HIGH CLEARANCE
4WD ONLY



SOUTHWEST AREA
INCIDENT MANAGEMENT TEAM 3

9/15/2020 2157
Aces from IR and MMA
North American 1983 Datum,
LatLong Grid

