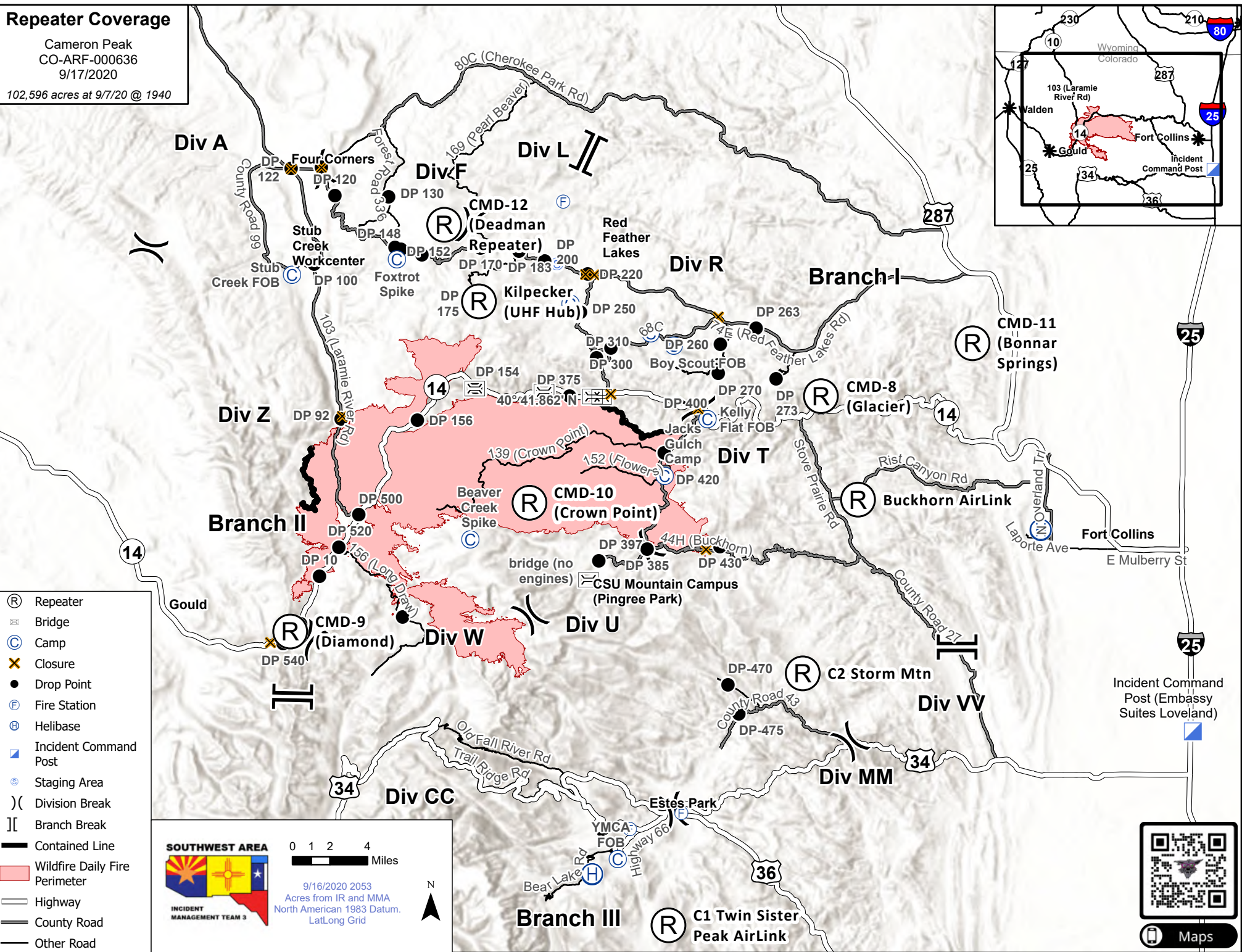
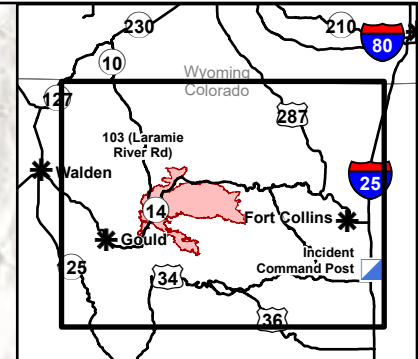


Repeater Coverage

Cameron Peak
CO-ARF-000636
9/17/2020

102,596 acres at 9/7/20 @ 1940



- (R) Repeater
- ⊠ Bridge
- (C) Camp
- ✕ Closure
- Drop Point
- (F) Fire Station
- (H) Helibase
- ▣ Incident Command Post
- (S) Staging Area
-) (Division Break
- || Branch Break
- Contained Line
- Wildfire Daily Fire Perimeter
- Highway
- County Road
- Other Road

SOUTHWEST AREA

INCIDENT MANAGEMENT TEAM 3

0 1 2 4 Miles

9/16/2020 2053
Acres from IR and MMA
North American 1983 Datum.
Lat/Long Grid

