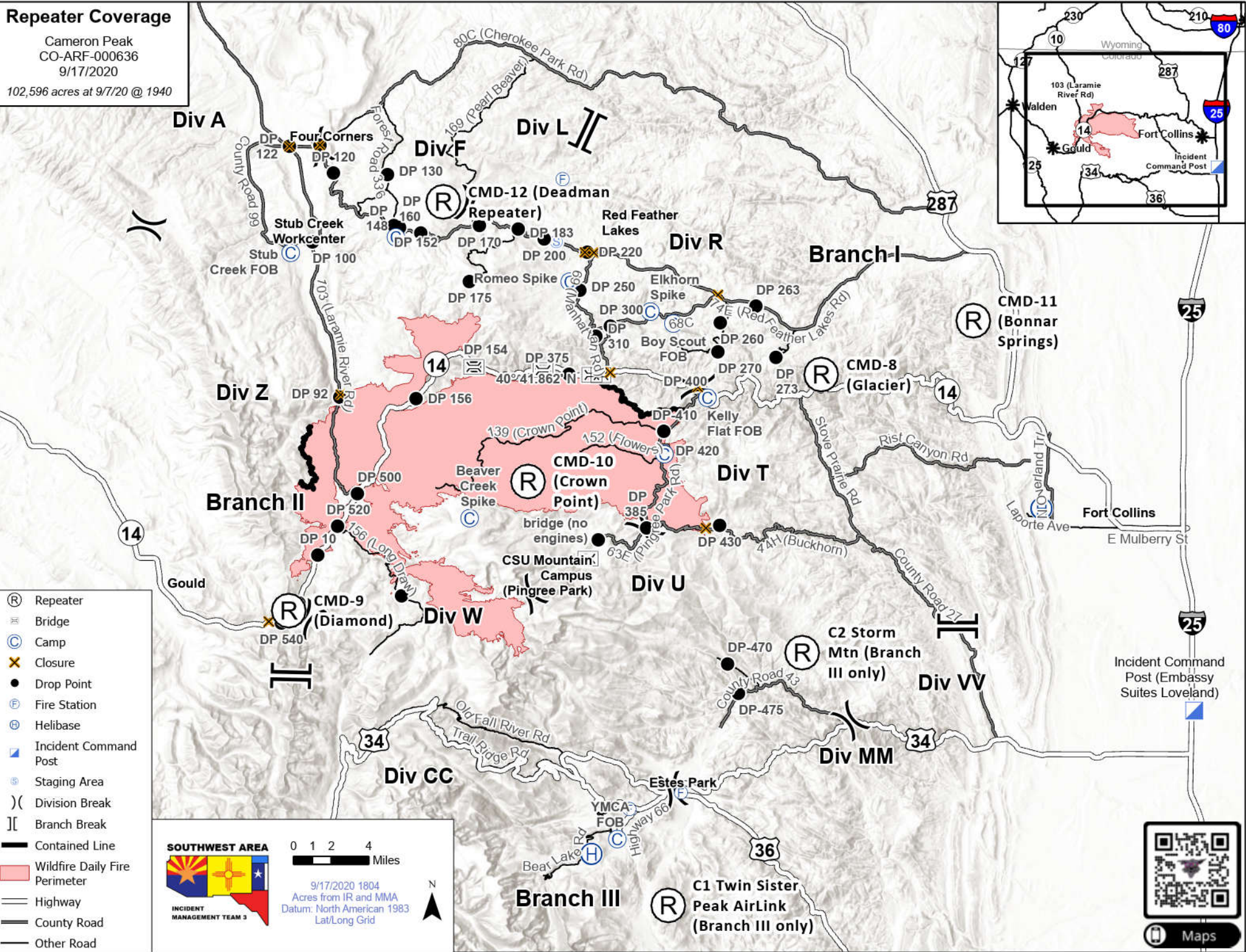
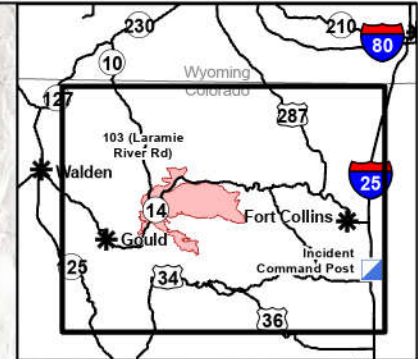


Repeater Coverage

Cameron Peak
CO-ARF-000636
9/17/2020

102,596 acres at 9/7/20 @ 1940



- (R) Repeater
- ≡ Bridge
- (C) Camp
- X Closure
- Drop Point
- (F) Fire Station
- (H) Helibase
- ▣ Incident Command Post
- ⊙ Staging Area
-) (Division Break
- || Branch Break
- Contained Line
- ▭ Wildfire Daily Fire Perimeter
- Highway
- County Road
- Other Road



0 1 2 4 Miles

9/17/2020 1804
Acres from IR and MMA
Datum: North American 1983
Lat/Long Grid



Maps