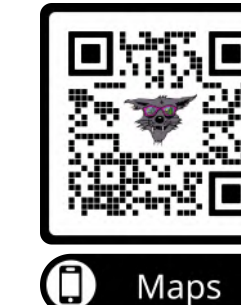


# Branch II

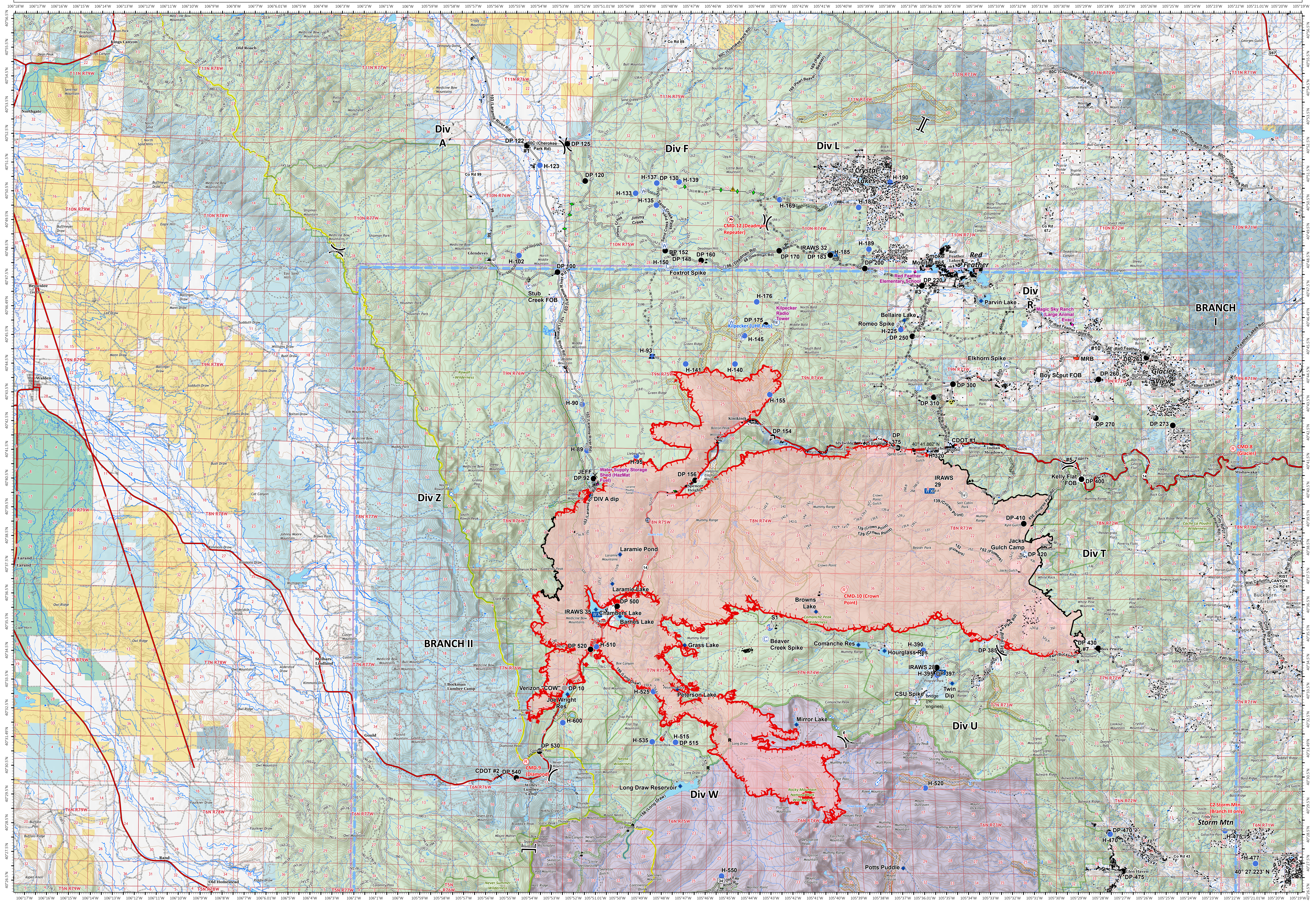
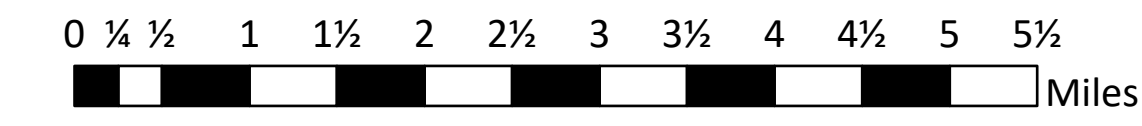
Cameron Peak  
CO-AR-000636  
102,596 acres as of 9/7/20 @ 1940

- Bridge
- Camp
- Closure
- Dip Site
- Drop Point
- Fence - Cut/Damaged
- Fire Station
- Gate
- Hazard
- Unimproved Landing Area
- Helispot
- Internet Access
- Lookout
- Mobile Weather Unit
- Resource Location
- Retardant/Mud Pit
- Safety Zone
- Sling Site
- Staging Area
- Stream Crossing
- Water Source
- Water Development or Draft Site
- Value at Risk
- Other
- Division Break
- Branch Break
- Uncontrolled Fire Edge
- Contained Line
- Completed Dozer Line
- Completed Hand Line
- Road as Completed Line
- Access or Improved Road
- Line Break Completed
- Completed Plow Line
- Fire Break Planned or Incomplete
- Temporary Flight Restriction
- Wildfire Daily Fire Perimeter
- Other
- County Line
- Designated Wilderness
- 50 foot contour



Southwest IMT 3  
9/17/2020 2228  
Acres from IR and MMA  
North American 1983 Datum, LatLong Grid

9/18/2020



C2 Storm Mtn  
(Branch II only)  
Storm Mtn