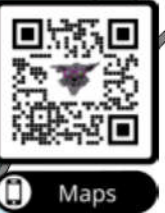
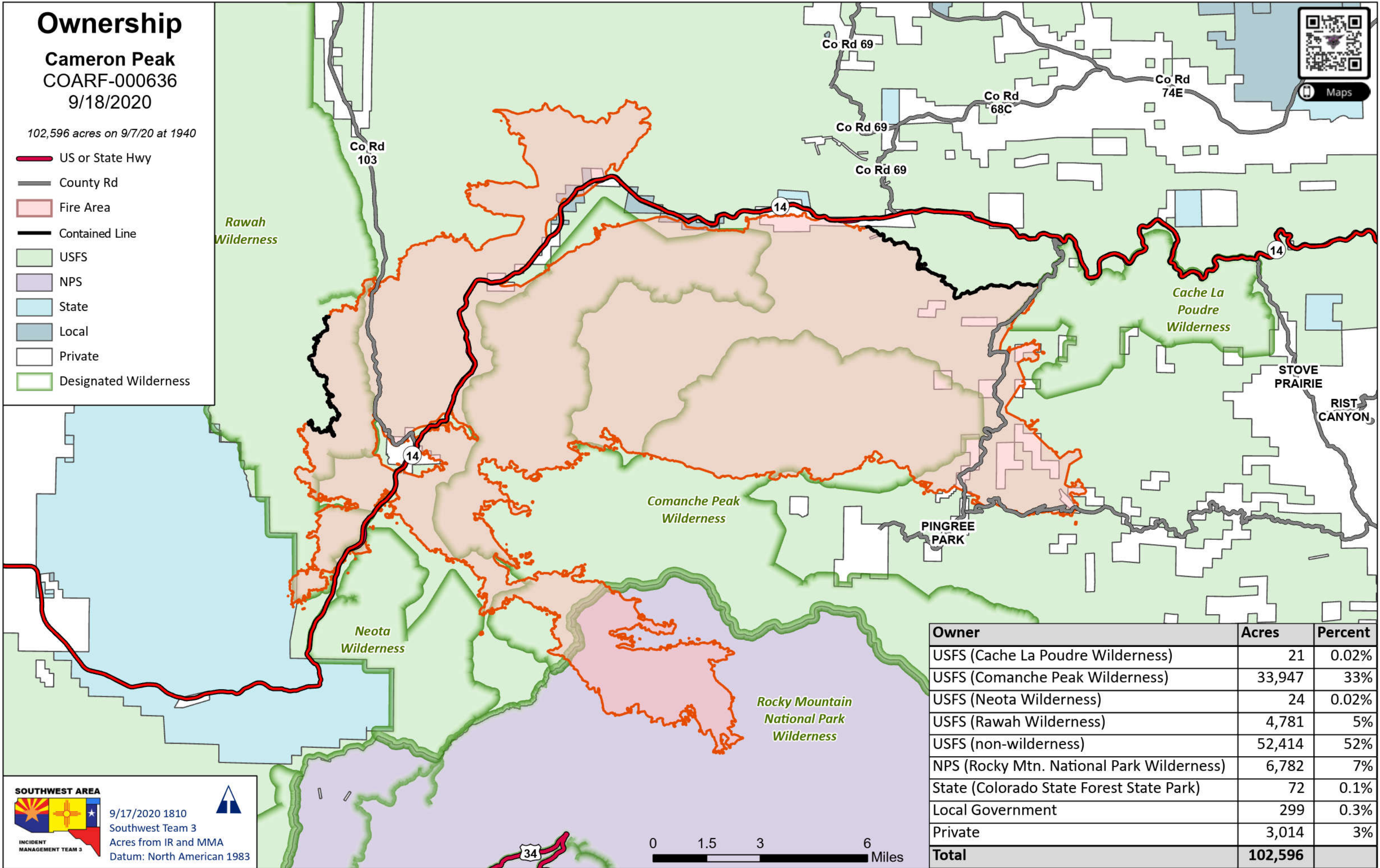


# Ownership

**Cameron Peak**  
COARF-000636  
9/18/2020

102,596 acres on 9/7/20 at 1940

- US or State Hwy
- County Rd
- Fire Area
- Contained Line
- USFS
- NPS
- State
- Local
- Private
- Designated Wilderness



Owner	Acres	Percent
USFS (Cache La Poudre Wilderness)	21	0.02%
USFS (Comanche Peak Wilderness)	33,947	33%
USFS (Neota Wilderness)	24	0.02%
USFS (Rawah Wilderness)	4,781	5%
USFS (non-wilderness)	52,414	52%
NPS (Rocky Mtn. National Park Wilderness)	6,782	7%
State (Colorado State Forest State Park)	72	0.1%
Local Government	299	0.3%
Private	3,014	3%
<b>Total</b>	<b>102,596</b>	

**SOUTHWEST AREA**

9/17/2020 1810  
Southwest Team 3  
Acres from IR and MMA  
Datum: North American 1983

