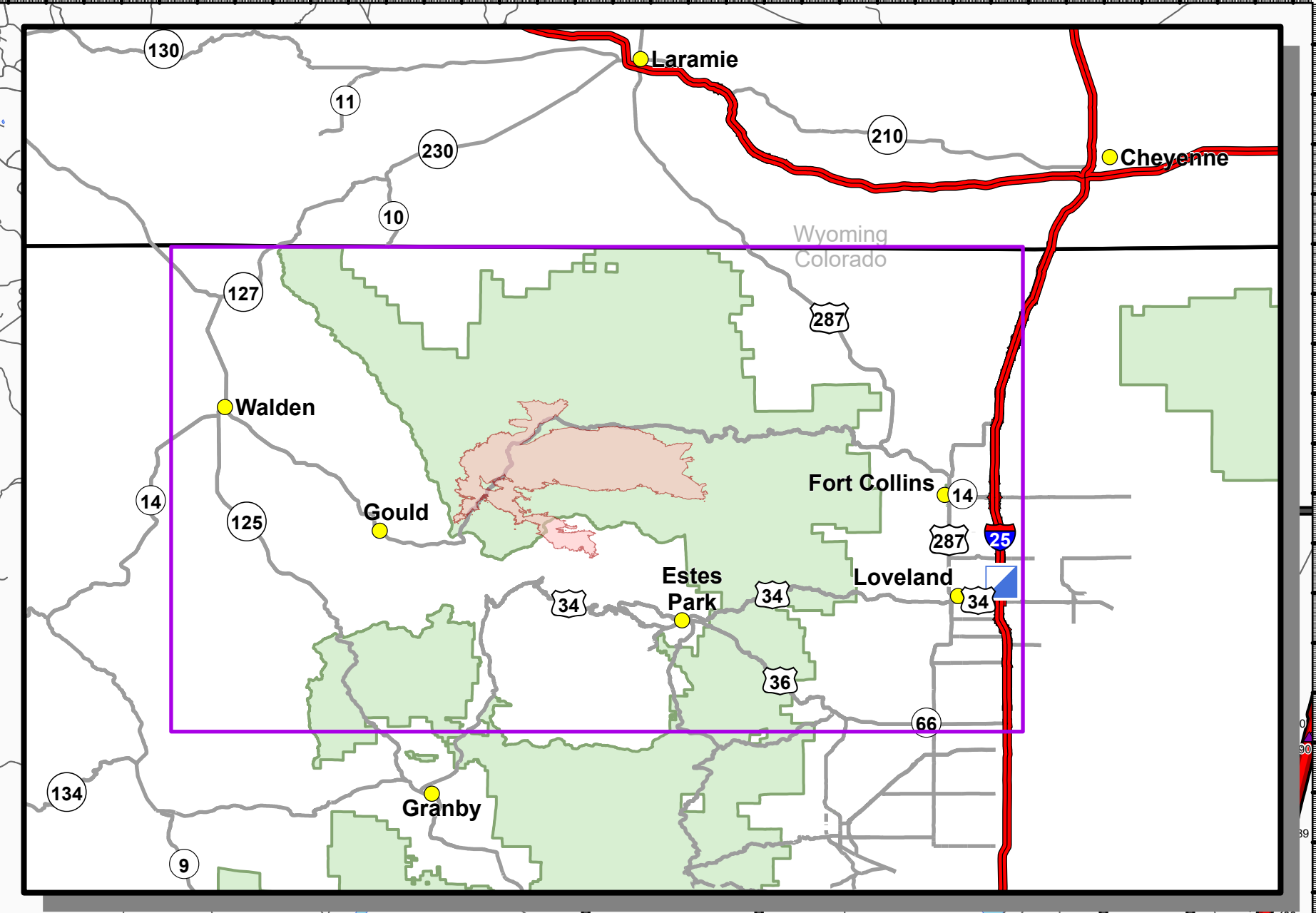
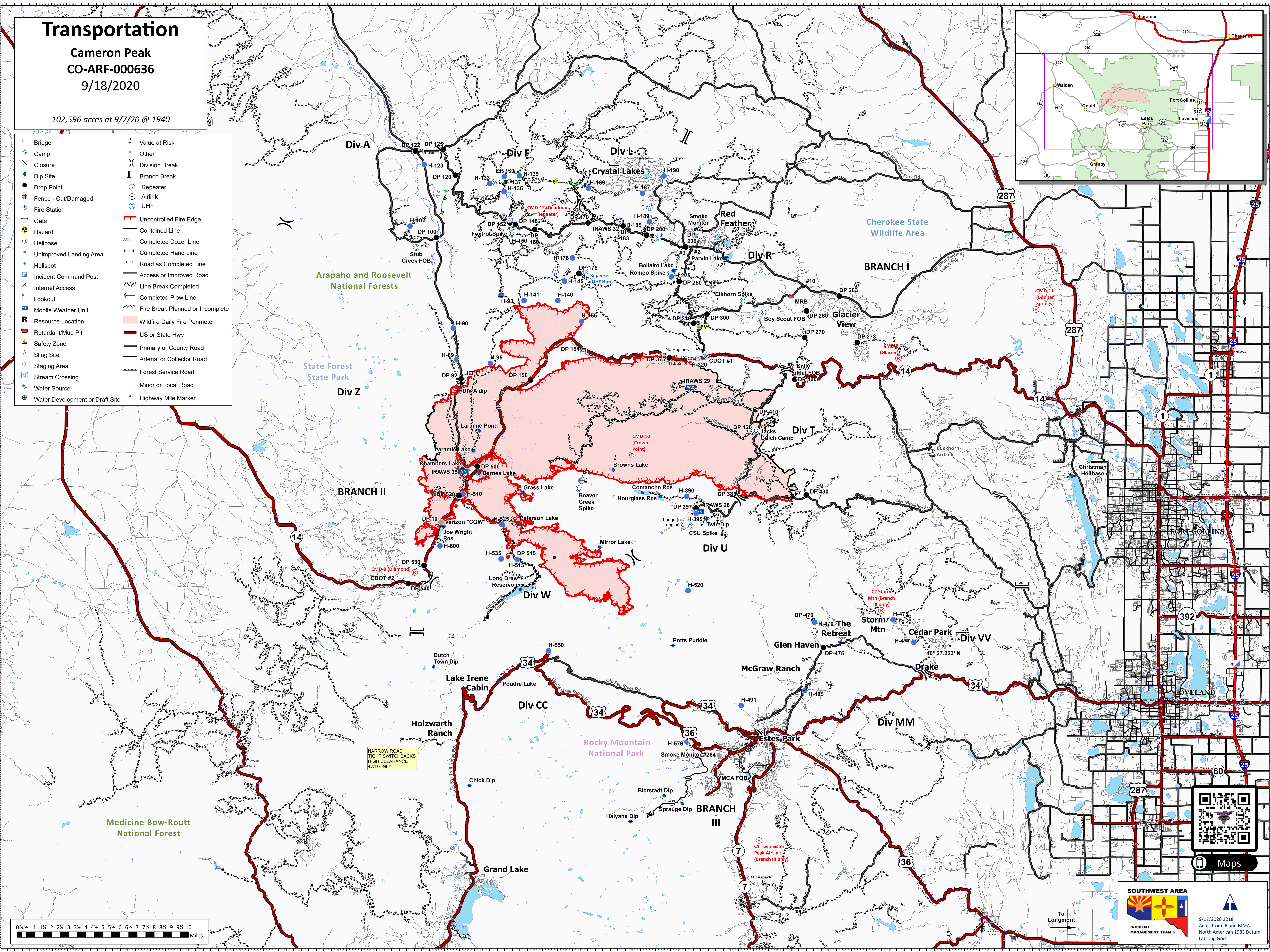


# Transportation

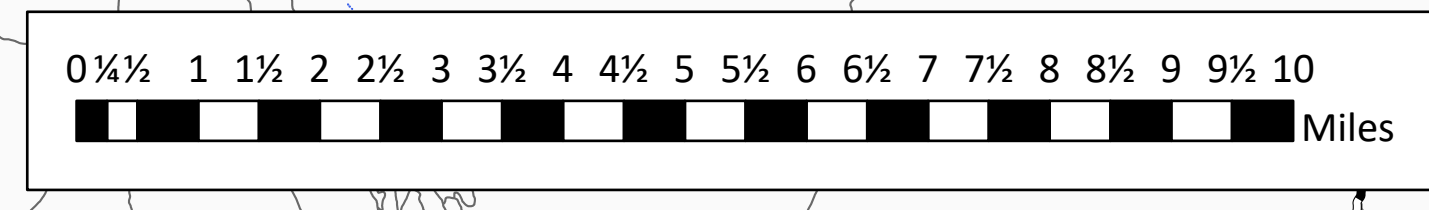
Cameron Peak  
CO-ARF-000636  
9/18/2020

102,596 acres at 9/7/20 @ 1940

- Bridge
- Camp
- Closure
- Dip Site
- Drop Point
- Fence - Cut/Damaged
- Fire Station
- Gate
- Hazard
- Helibase
- Unimproved Landing Area
- Helispot
- Incident Command Post
- Internet Access
- Lookout
- Mobile Weather Unit
- Resource Location
- Retardant/Mud Pit
- Safety Zone
- Sling Site
- Staging Area
- Stream Crossing
- Water Source
- Water Development or Draft Site
- Value at Risk
- Other
- Division Break
- Branch Break
- Repeater
- Airlink
- UHF
- Uncontrolled Fire Edge
- Contained Line
- Completed Dozer Line
- Completed Hand Line
- Road as Completed Line
- Access or Improved Road
- Line Break Completed
- Completed Plow Line
- Fire Break Planned or Incomplete
- Wildfire Daily Fire Perimeter
- US or State Hwy
- Primary or County Road
- Arterial or Collector Road
- Forest Service Road
- Minor or Local Road
- Highway Mile Marker



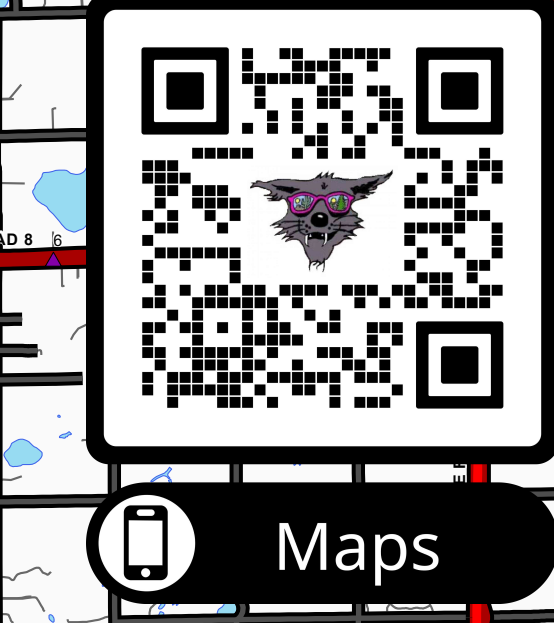
NARROW ROAD  
TIGHT SWITCHBACKS  
HIGH CLEARANCE  
4WD ONLY



To Longmont

**SOUTHWEST AREA**  
INCIDENT MANAGEMENT TEAM 3

9/17/2020 2218  
Acres from IR and MMA  
North American 1983 Datum,  
LatLong Grid



Maps