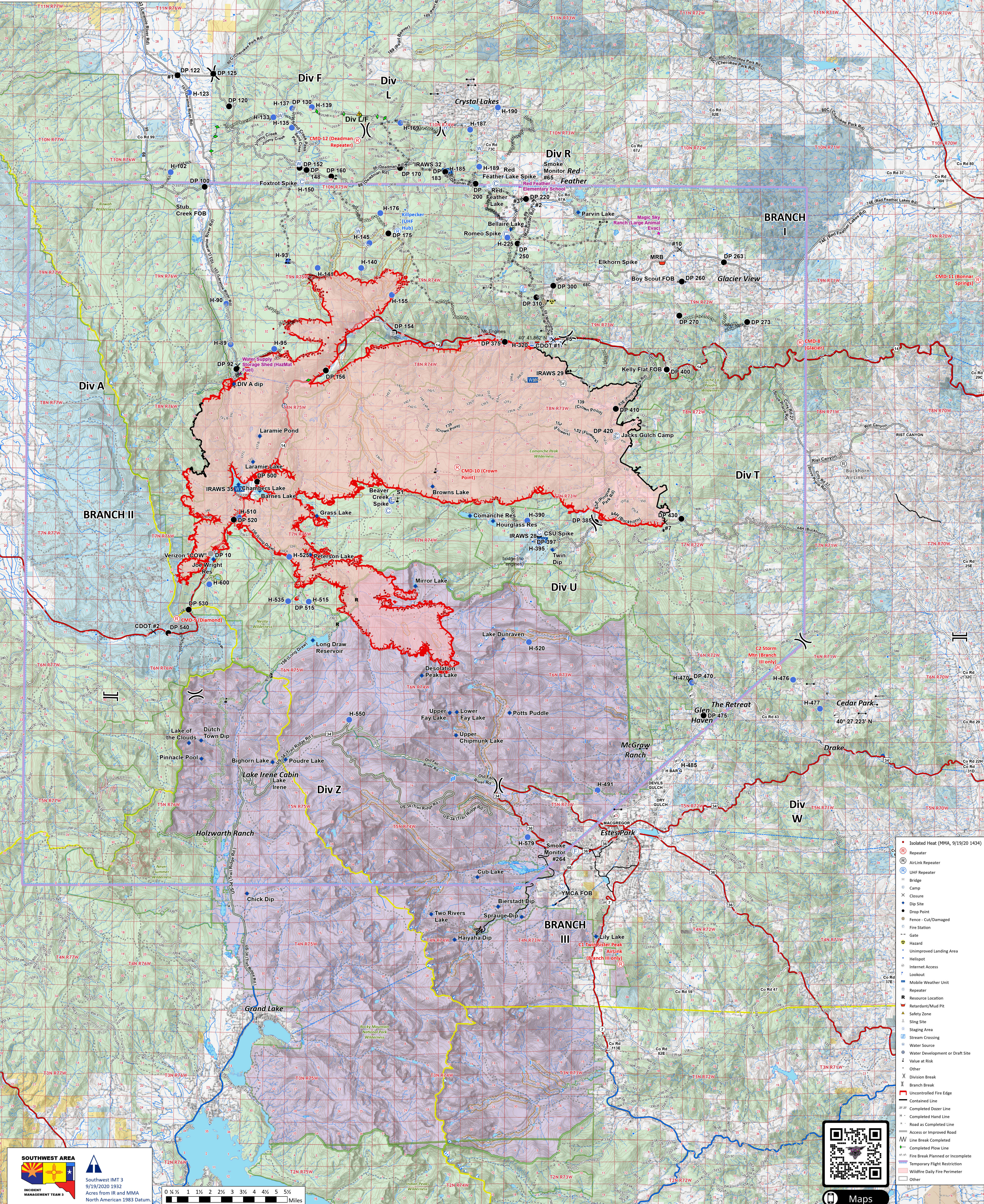


# Operations

Cameron Peak  
CO-ARF-000636

9/20/20

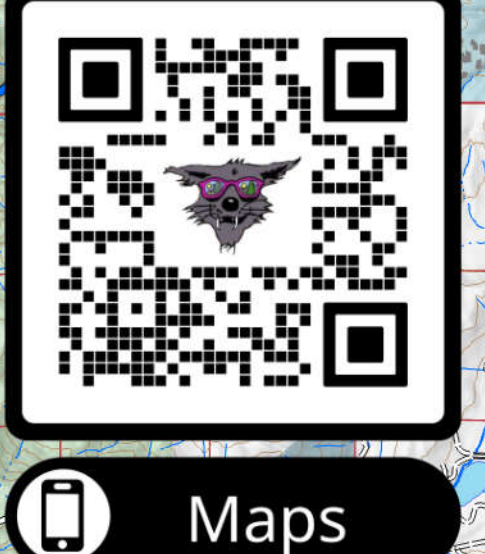
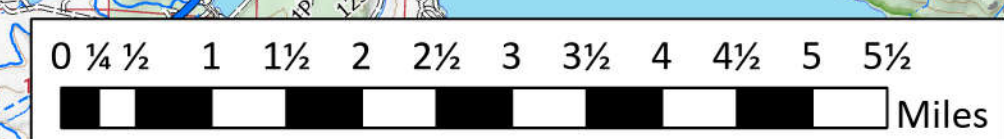
102,596 acres at 9/7/20 @ 1940 (MMA + IR)  
Latest IR: 102,567 acres at 9/19/20 at 1434



- Isolated Heat (MMA, 9/19/20 1434)
- Ⓡ Repeater
- Ⓡ AirLink Repeater
- Ⓡ UHF Repeater
- Ⓡ Bridge
- Ⓡ Camp
- Ⓡ Closure
- Ⓡ Dip Site
- Ⓡ Drop Point
- Ⓡ Fence - Cut/Damaged
- Ⓡ Fire Station
- Ⓡ Gate
- Ⓡ Hazard
- Ⓡ Unimproved Landing Area
- Ⓡ Helispot
- Ⓡ Internet Access
- Ⓡ Lookout
- Ⓡ Mobile Weather Unit
- Ⓡ Repeater
- Ⓡ Resource Location
- Ⓡ Retardant/Mud Pit
- Ⓡ Safety Zone
- Ⓡ Sling Site
- Ⓡ Staging Area
- Ⓡ Stream Crossing
- Ⓡ Water Source
- Ⓡ Water Development or Draft Site
- Ⓡ Value at Risk
- Ⓡ Other
- Ⓡ Division Break
- Ⓡ Branch Break
- Ⓡ Uncontrolled Fire Edge
- Ⓡ Contained Line
- Ⓡ Completed Dozer Line
- Ⓡ Completed Hand Line
- Ⓡ Road as Completed Line
- Ⓡ Access or Improved Road
- Ⓡ Line Break Completed
- Ⓡ Completed Plow Line
- Ⓡ Fire Break Planned or Incomplete
- Ⓡ Temporary Flight Restriction
- Ⓡ Wildfire Daily Fire Perimeter
- Ⓡ Other

**SOUTHWEST AREA**  
INCIDENT MANAGEMENT TEAM 3

Southwest IMT 3  
9/19/2020 1932  
Acres from IR and MMA  
North American 1983 Datum.



Maps