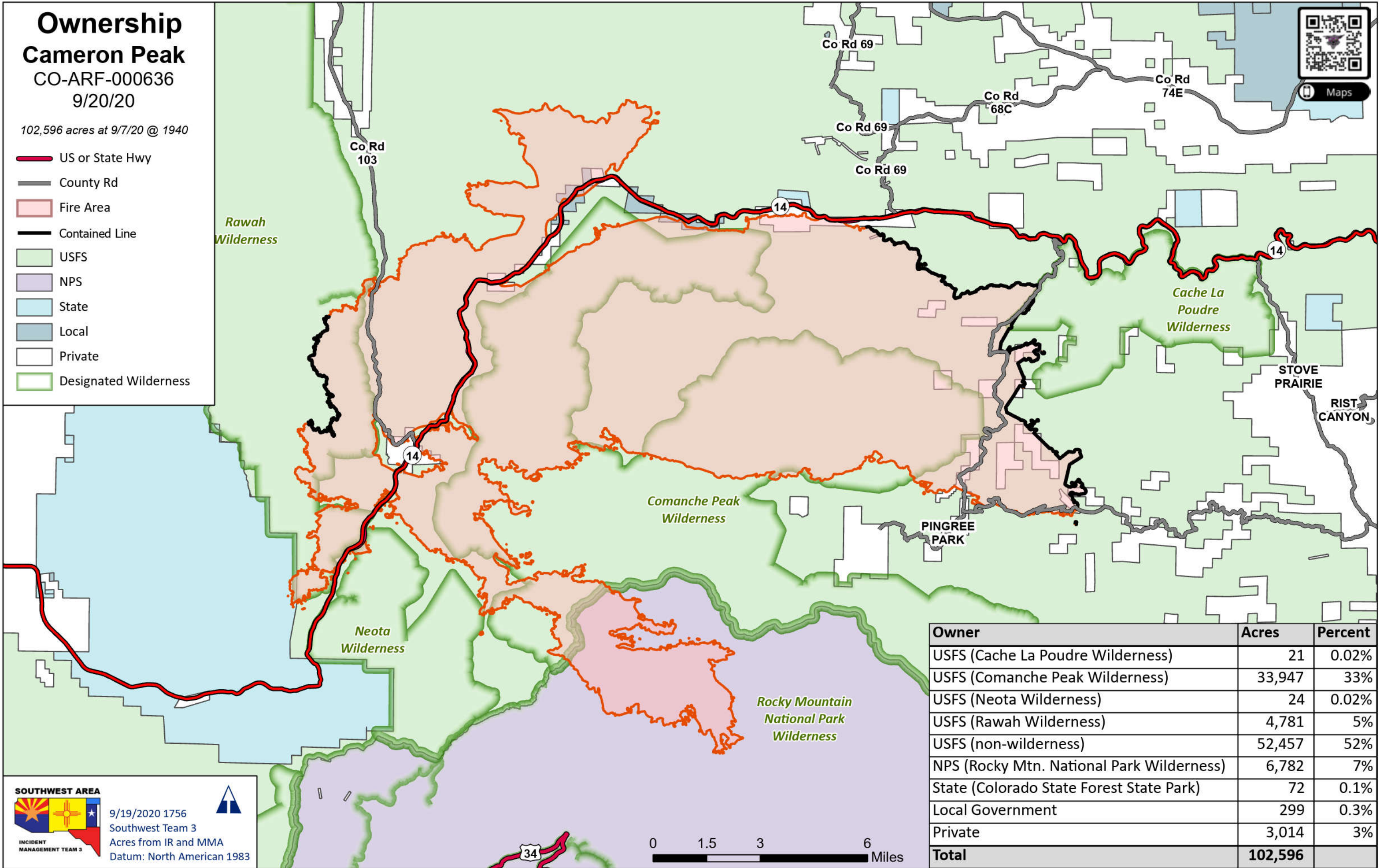


# Ownership Cameron Peak CO-ARF-000636 9/20/20

102,596 acres at 9/7/20 @ 1940

- US or State Hwy
- County Rd
- Fire Area
- Contained Line
- USFS
- NPS
- State
- Local
- Private
- Designated Wilderness



Owner	Acres	Percent
USFS (Cache La Poudre Wilderness)	21	0.02%
USFS (Comanche Peak Wilderness)	33,947	33%
USFS (Neota Wilderness)	24	0.02%
USFS (Rawah Wilderness)	4,781	5%
USFS (non-wilderness)	52,457	52%
NPS (Rocky Mtn. National Park Wilderness)	6,782	7%
State (Colorado State Forest State Park)	72	0.1%
Local Government	299	0.3%
Private	3,014	3%
<b>Total</b>	<b>102,596</b>	

**SOUTHWEST AREA**  
  
 9/19/2020 1756  
 Southwest Team 3  
 Acres from IR and MMA  
 Datum: North American 1983