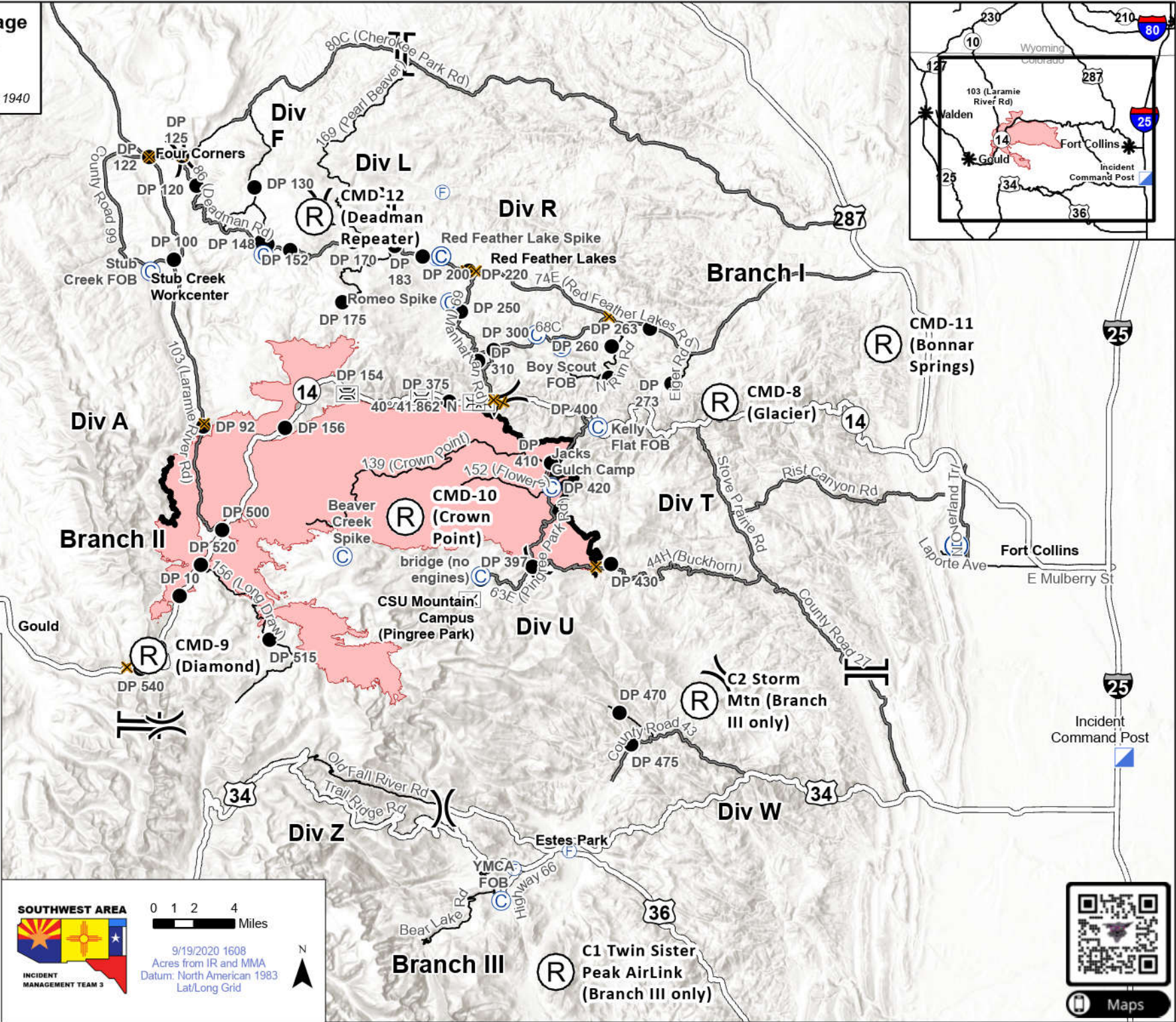
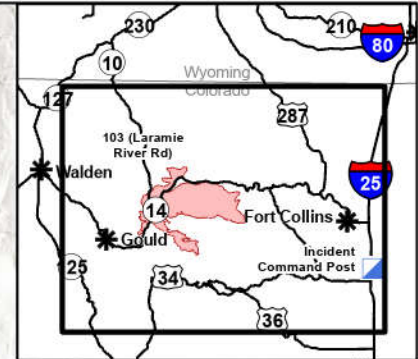


**Repeater Coverage
Cameron Peak**
CO-ARF-000636
9/20/2020
102,596 acres on 9/7/20 @ 1940



- (R) Repeater
- ≡ Bridge
- (C) Camp
- ✕ Closure
- Drop Point
- (F) Fire Station
- (H) Helibase
- ▣ Incident Command Post
- ⊙ Staging Area
-) (Division Break
- [] Branch Break
- ▬ Contained Line
- ▬ Wildfire Daily Fire Perimeter
- ▬ Highway
- ▬ County Road
- ▬ Other Road



0 1 2 4 Miles
9/19/2020 1608
Acres from IR and MMA
Datum: North American 1983
Lat/Long Grid



Maps

(R) C1 Twin Sister Peak AirLink (Branch III only)

(R) C2 Storm Mtn (Branch III only)

Branch III

Branch II

Branch I

Div Z

Div U

Div T

CMD-10 (Crown Point)

CMD-8 (Glacier)

CMD-11 (Bonnar Springs)

CMD-12 (Deadman Repeater)

Div A

Div F

Div L

Div R

Fort Collins

Incident Command Post

Estes Park

Beat Lake Rd

YMCA FOB

Highway 66

36

34

34

34

14

287

25

25

County Road 99

103 (Laramie River Rd)

80C (Cherokee Park Rd)

169 (Pearl Beaver)

80 (Deadman Rd)

Red Feather Lake Spike

Red Feather Lakes

Romeo Spike

DP 250

DP 300

DP 260

DP 263

DP 273

DP 273

DP 273

DP 273

DP 273

DP 273

DP 273

DP 273

DP 273

DP 273

DP 273

DP 273

DP 273

DP 273

DP 273

DP 273

DP 273

DP 273

DP 273