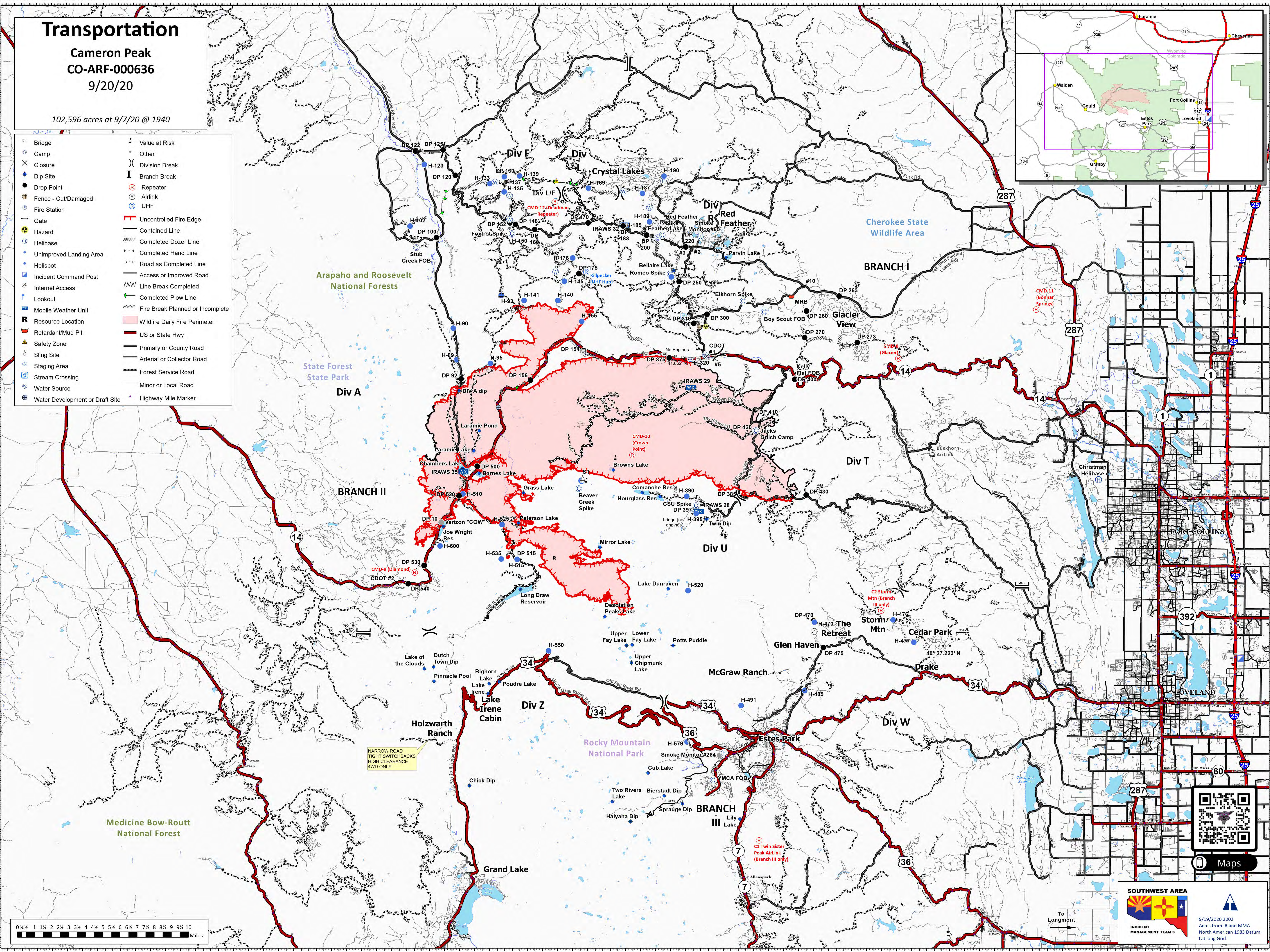
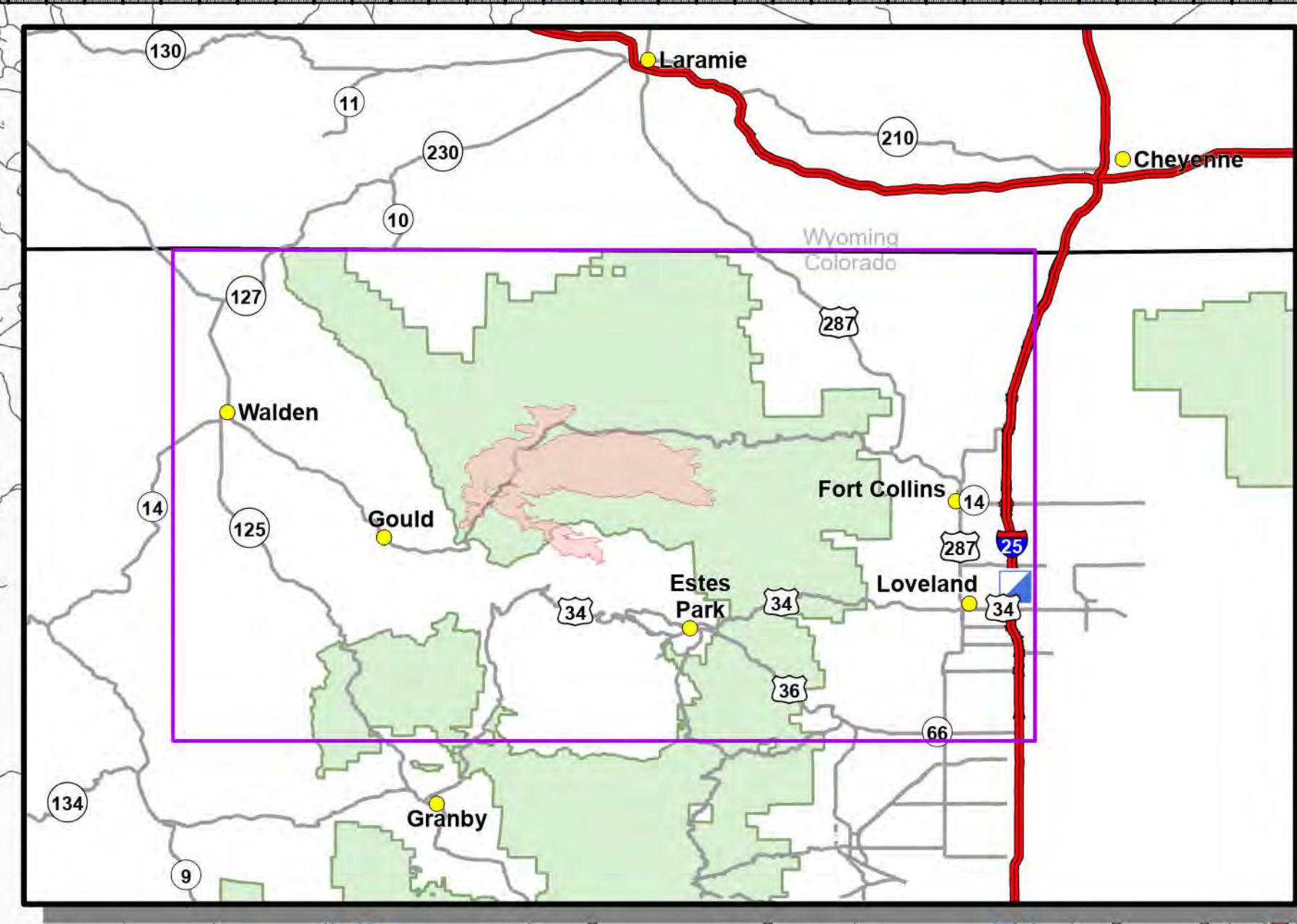


Transportation

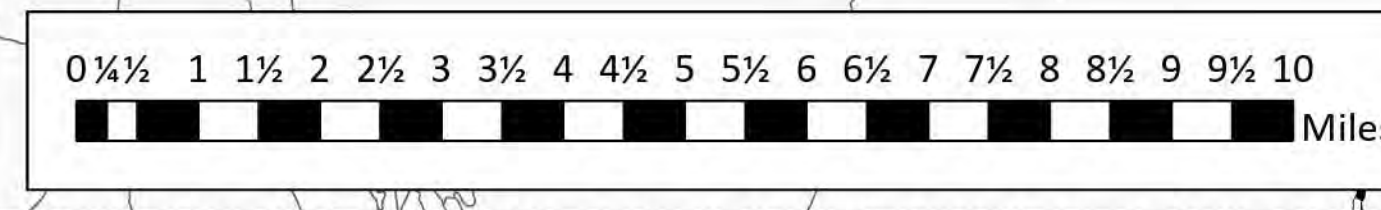
Cameron Peak
CO-ARF-000636
9/20/20

102,596 acres at 9/7/20 @ 1940

- | | |
|---------------------------------|----------------------------------|
| Bridge | Value at Risk |
| Camp | Other |
| Closure | Division Break |
| Dip Site | Branch Break |
| Drop Point | Repeater |
| Fence - Cut/Damaged | Airlink |
| Fire Station | UHF |
| Gate | Uncontrolled Fire Edge |
| Hazard | Contained Line |
| Helibase | Completed Dozer Line |
| Unimproved Landing Area | Completed Hand Line |
| Helispot | Road as Completed Line |
| Incident Command Post | Access or Improved Road |
| Internet Access | Line Break Completed |
| Lookout | Completed Plow Line |
| Mobile Weather Unit | Fire Break Planned or Incomplete |
| Resource Location | Wildfire Daily Fire Perimeter |
| Retardant/Mud Pit | US or State Hwy |
| Safety Zone | Primary or County Road |
| Sling Site | Arterial or Collector Road |
| Staging Area | Forest Service Road |
| Stream Crossing | Minor or Local Road |
| Water Source | Highway Mile Marker |
| Water Development or Draft Site | |



NARROW ROAD
TIGHT SWITCHBACKS
HIGH CLEARANCE
4WD ONLY



SOUTHWEST AREA
INCIDENT MANAGEMENT TEAM 3

9/19/2020 2002
Acres from IR and MMA
North American 1983 Datum,
LatLong Grid

To Longmont