

Public Information Cameron Peak

CO-ARF-000636

9/22/2020

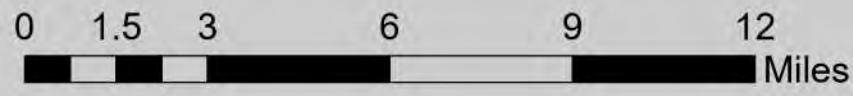
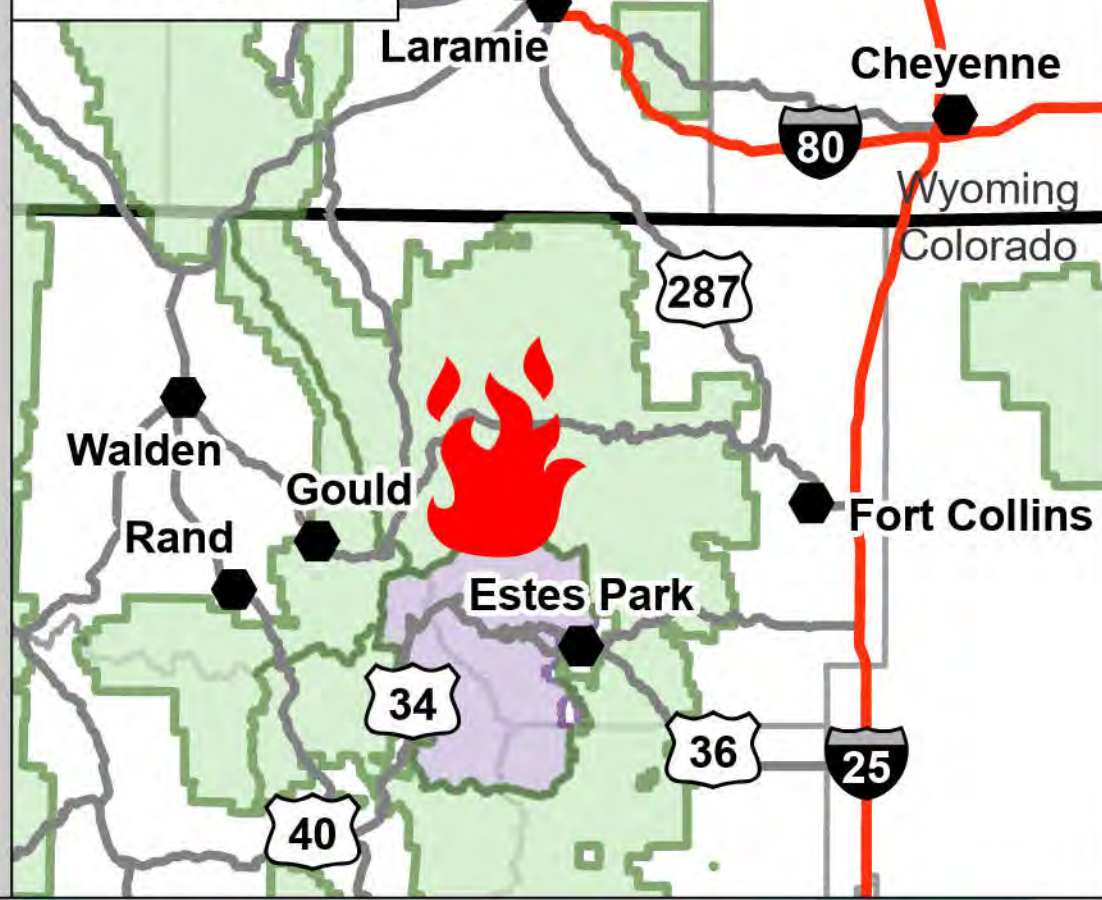
IR 9/21/20 at 1428

104,530 acres

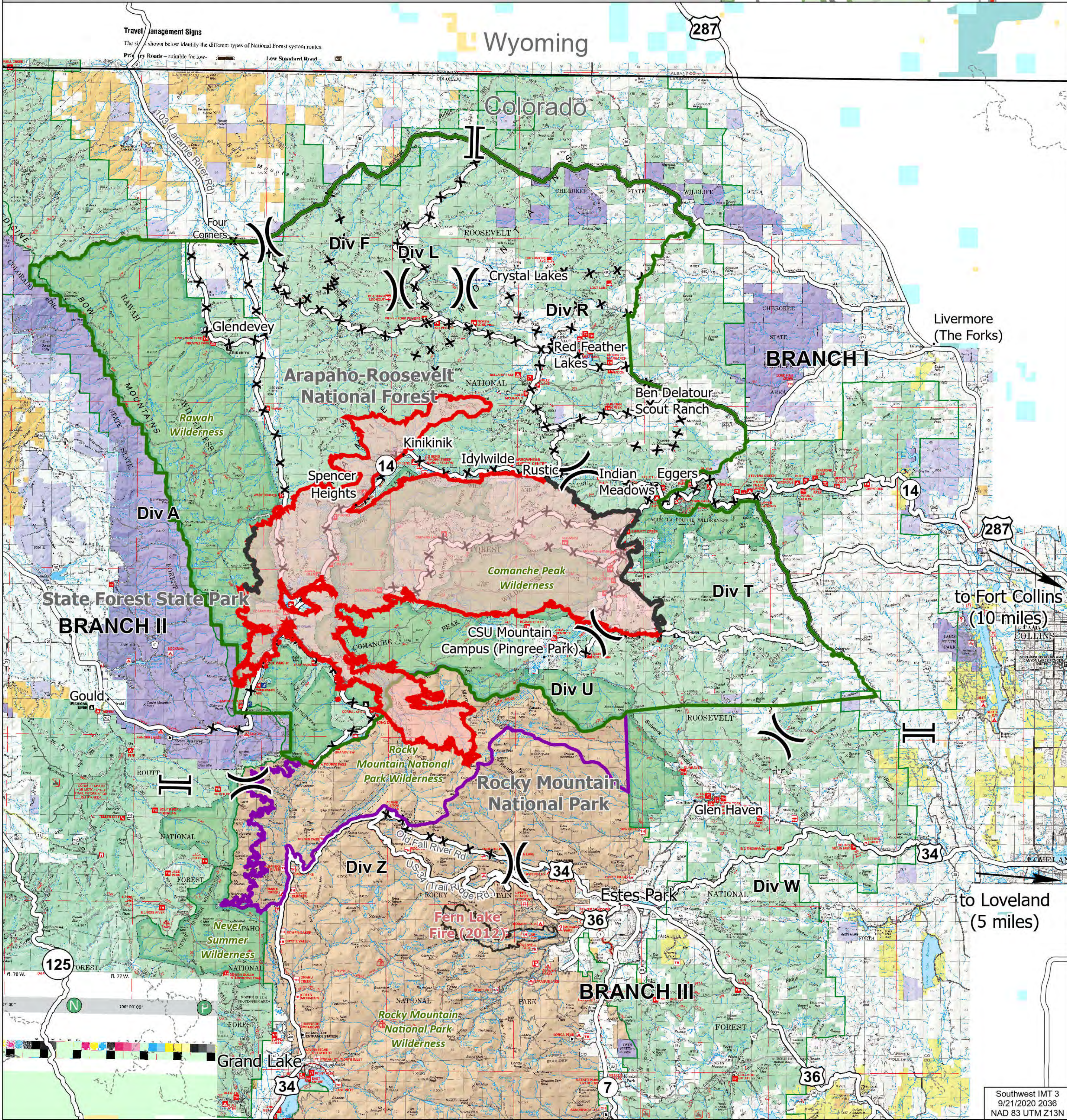
15% contained

- Cameron Peak Fire
- Contained Line
- ⌘ Division Break
- ⌚ Branch Break
- National Forest Closure Area, 9/17/20
- National Park Closure Area, 9/6/20
- x Road Closure
- Primary Route
- Trail
- Fire History

Vicinity Map



Travel Management Signs
The signs shown below identify the different types of National Forest system routes.
Primary Roads - suitable for low-
Low Standard Road



to Fort Collins (10 miles)

to Loveland (5 miles)