

Public Information Cameron Peak

CO-ARF-000636

9/25/2020

IR 9/24/2020 1446

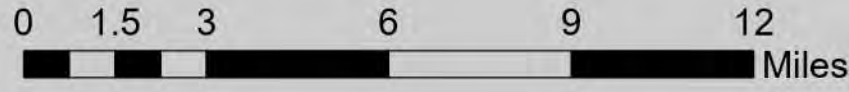
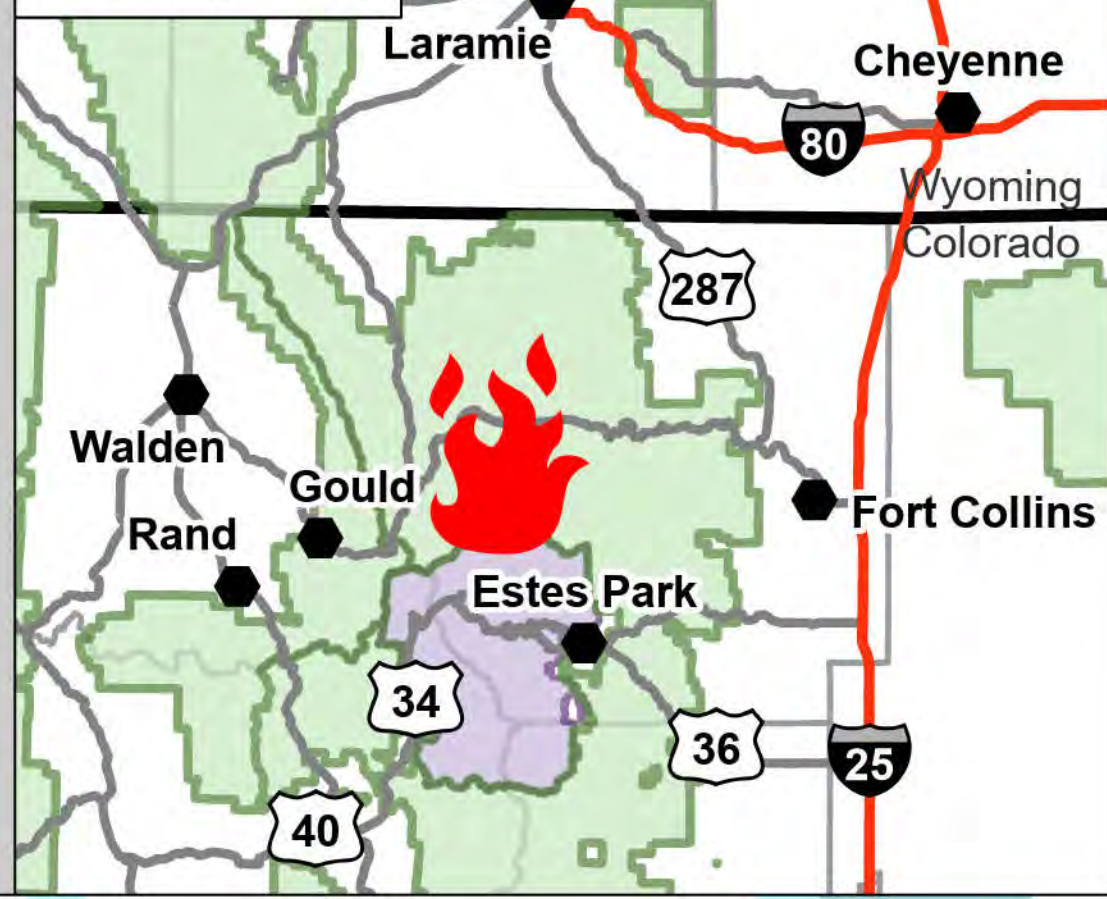
104,845 acres

27% contained

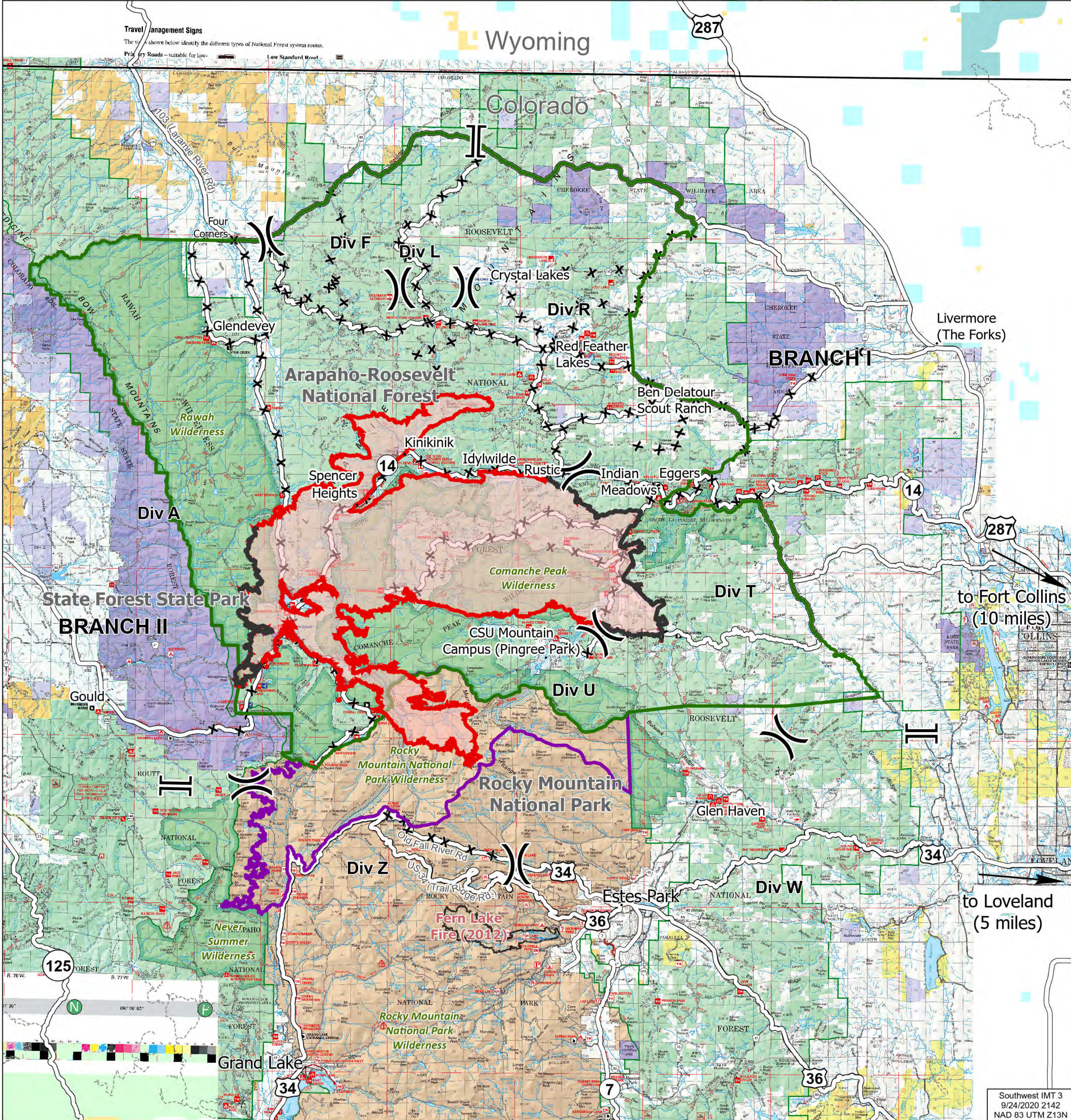
- █ Cameron Peak Fire
- Contained Line
- X Division Break
- Branch Break
- National Forest Closure Area, 9/17/20
- National Park Closure Area, 9/6/20
- x Road Closure
- Primary Route
- Trail
- Fire History



Vicinity Map



Travel Management Signs
The signs shown below identify the different types of National Forest system routes.
Primary Roads - suitable for low-...
Low Standard Road



to Fort Collins (10 miles)

to Loveland (5 miles)