

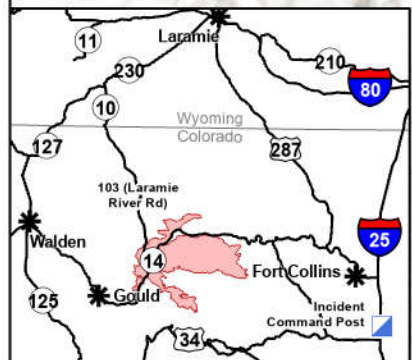
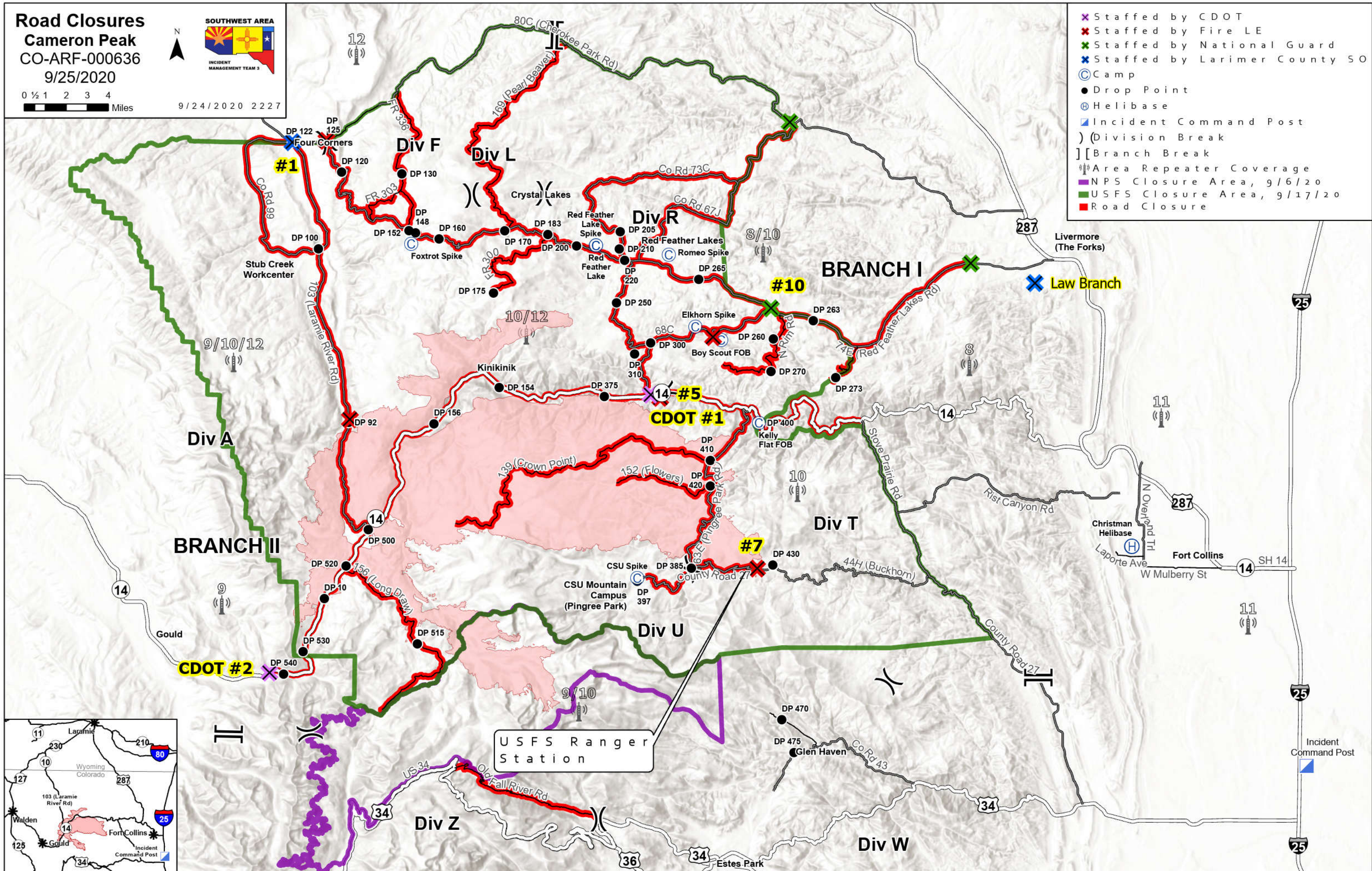
**Road Closures**  
**Cameron Peak**  
 CO-ARF-000636  
 9/25/2020



0 1/2 1 2 3 4  
 Miles

9/24/2020 2227

- ✕ Staffed by CDOT
- ✕ Staffed by Fire LE
- ✕ Staffed by National Guard
- ✕ Staffed by Larimer County SO
- ⊙ Camp
- Drop Point
- ⊕ Helibase
- ▢ Incident Command Post
- ) ( Division Break
- ] [ Branch Break
- Ⓜ Area Repeater Coverage
- █ NPS Closure Area, 9/6/20
- █ USFS Closure Area, 9/17/20
- █ Road Closure



USFS Ranger Station

Law Branch

CDOT #2

CDOT #1

#7

#5

#10

#1

BRANCH I

BRANCH II

Div Z

Div W

Div U

Div T

Div R

Div L

Div F

Div A

Livermore (The Forks)

Fort Collins

Christman Helibase

CSU Mountain Campus (Pingree Park)

CSU Spike

Kelly Flat FOB

Boy Scout FOB

Elkhorn Spike

Romeo Spike

Red Feather Lake

Red Feather Lake Spike

Crystal Lakes

Kinikini

Stub Creek Workcenter

Four Corners

Crystal Lakes

Red Feather Lake

Red Feather Lake Spike

Crystal Lakes

Crystal Lakes

Crystal Lakes

Crystal Lakes

Crystal Lakes

Crystal Lakes

Crystal Lakes

Crystal Lakes

Crystal Lakes

Crystal Lakes

Crystal Lakes

Crystal Lakes

Crystal Lakes

Crystal Lakes

Crystal Lakes

Crystal Lakes

Crystal Lakes

Crystal Lakes