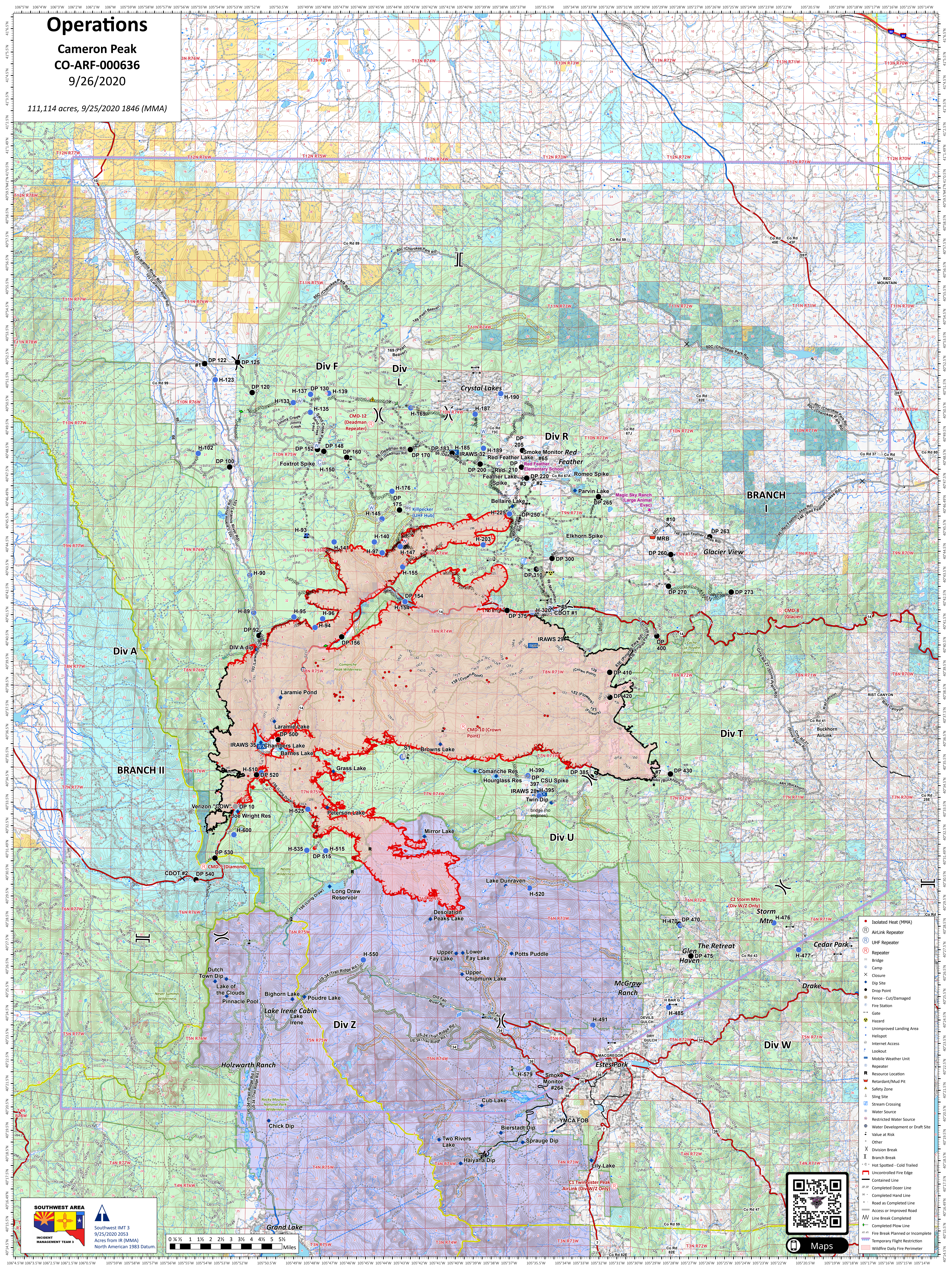


Operations

Cameron Peak
CO-ARF-000636
9/26/2020

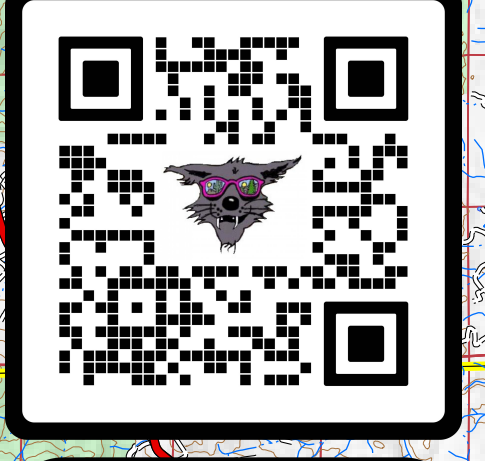
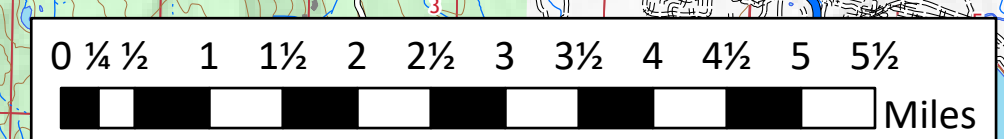
111,114 acres, 9/25/2020 1846 (MMA)



- Isolated Heat (MMA)
- Ⓜ AirLink Repeater
- Ⓜ UHF Repeater
- Ⓜ Repeater
- Ⓜ Bridge
- Ⓜ Camp
- Ⓜ Closure
- Ⓜ Dip Site
- Ⓜ Drop Point
- Ⓜ Fence - Cut/Damaged
- Ⓜ Fire Station
- Ⓜ Gate
- Ⓜ Hazard
- Ⓜ Unimproved Landing Area
- Ⓜ Helispot
- Ⓜ Internet Access
- Ⓜ Lookout
- Ⓜ Mobile Weather Unit
- Ⓜ Repeater
- Ⓜ Resource Location
- Ⓜ Retardant/Mud Pit
- Ⓜ Safety Zone
- Ⓜ Sling Site
- Ⓜ Stream Crossing
- Ⓜ Water Source
- Ⓜ Restricted Water Source
- Ⓜ Water Development or Draft Site
- Ⓜ Value at Risk
- Ⓜ Other
- Ⓜ Division Break
- Ⓜ Branch Break
- Ⓜ Hot Spotted - Cold Trailed
- Ⓜ Uncontrolled Fire Edge
- Ⓜ Contained Line
- Ⓜ Completed Dozer Line
- Ⓜ Completed Hand Line
- Ⓜ Road as Completed Line
- Ⓜ Access or Improved Road
- Ⓜ Line Break Completed
- Ⓜ Completed Pile Line
- Ⓜ Fire Break Planned or Incomplete
- Ⓜ Temporary Flight Restriction
- Ⓜ Wildfire Daily Fire Perimeter

SOUTHWEST AREA
INCIDENT MANAGEMENT TEAM 3

Southwest IMT 3
9/25/2020 2053
Acres from IR (MMA)
North American 1983 Datum.



Maps