

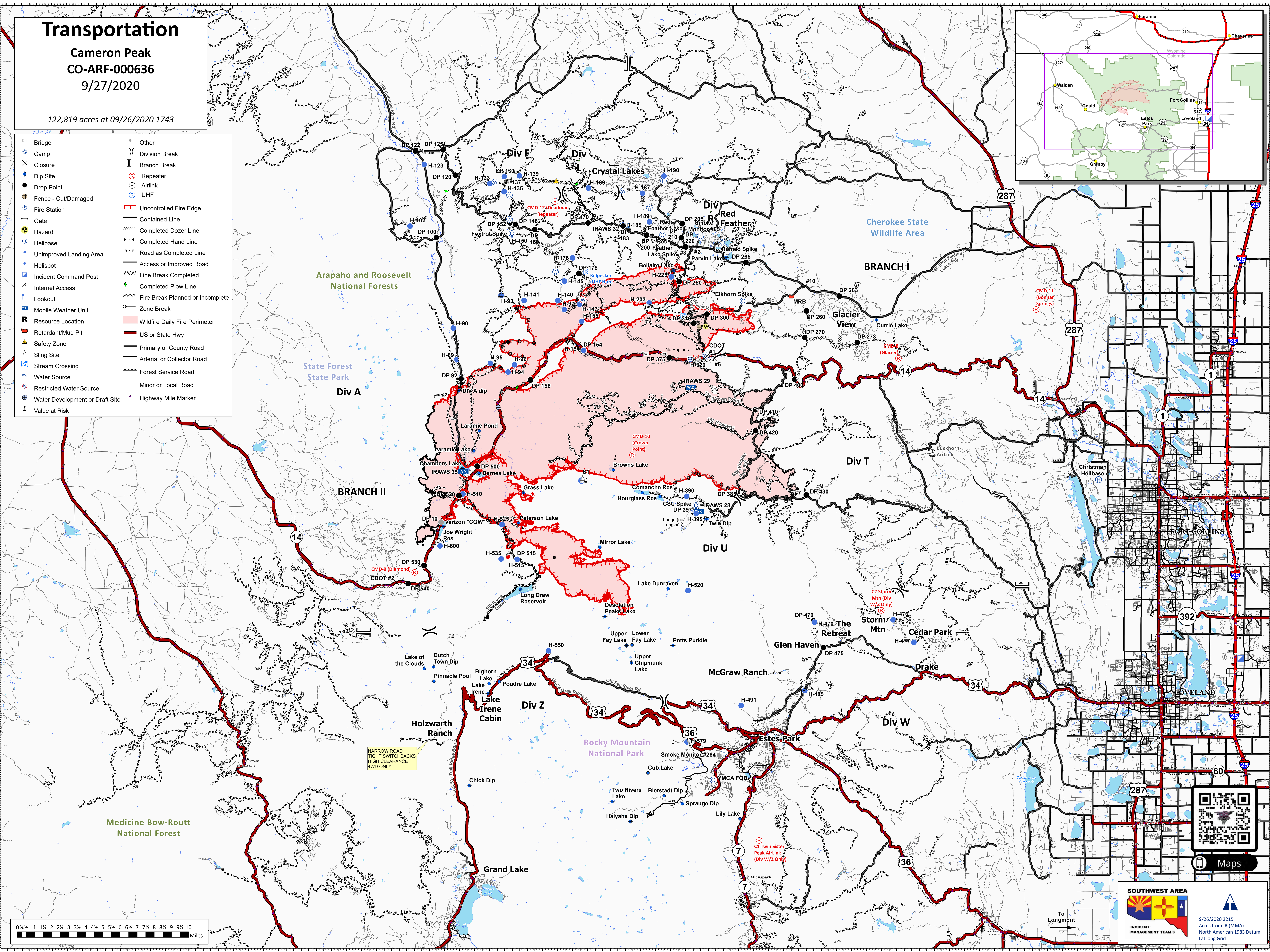
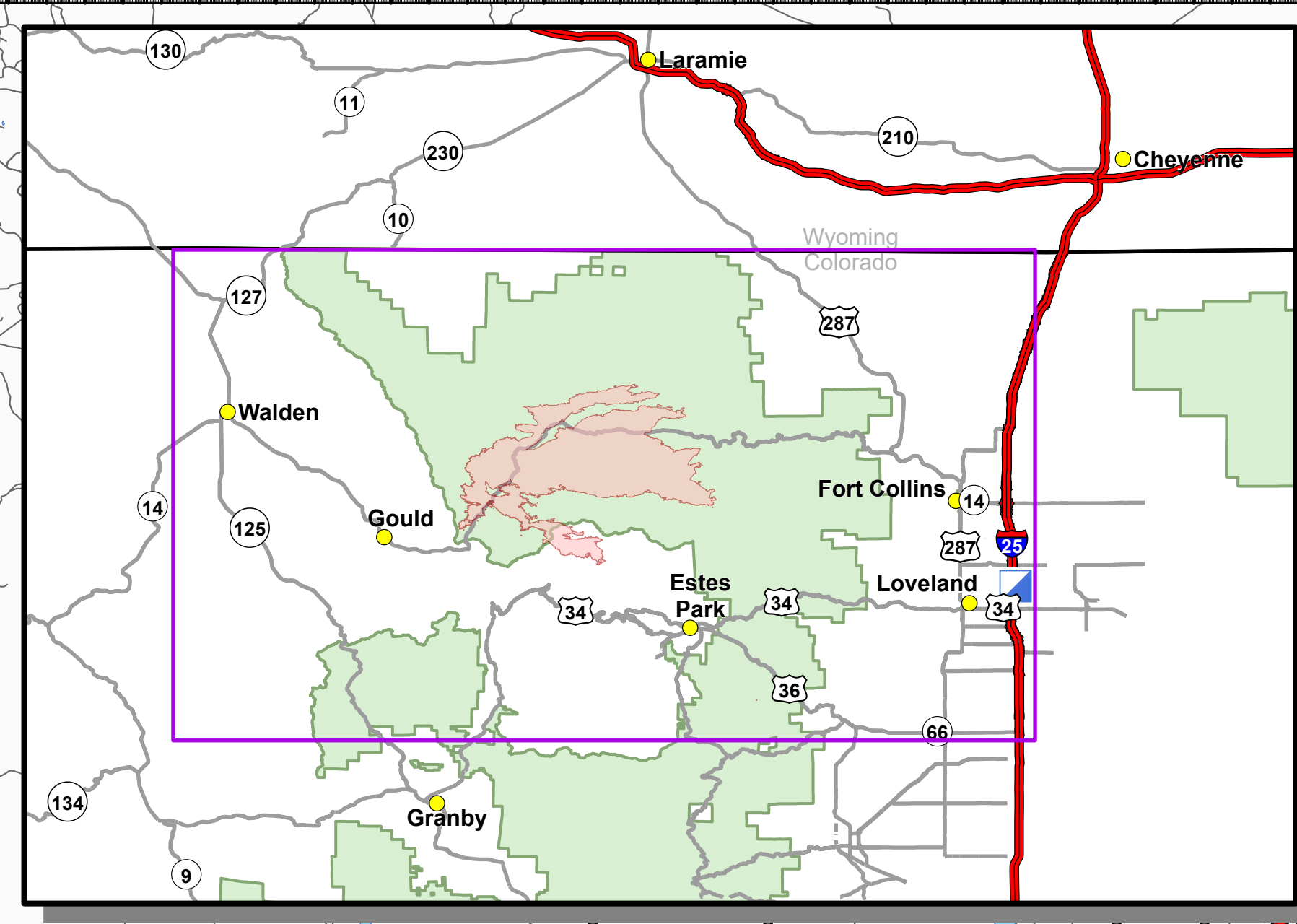
Transportation

Cameron Peak
CO-ARF-000636

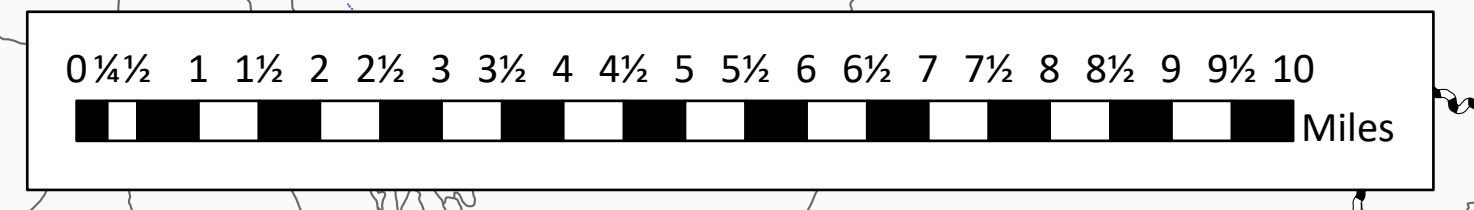
9/27/2020

122,819 acres at 09/26/2020 1743

- | | |
|---------------------------------|----------------------------------|
| Bridge | Other |
| Camp | Division Break |
| Closure | Branch Break |
| Dip Site | Repeater |
| Drop Point | Airlink |
| Fence - Cut/Damaged | UHF |
| Fire Station | Uncontrolled Fire Edge |
| Gate | Contained Line |
| Hazard | Completed Dozer Line |
| Helibase | Completed Hand Line |
| Unimproved Landing Area | Road as Completed Line |
| Helispot | Access or Improved Road |
| Incident Command Post | Line Break Completed |
| Internet Access | Completed Plow Line |
| Lookout | Fire Break Planned or Incomplete |
| Mobile Weather Unit | Zone Break |
| Resource Location | Wildfire Daily Fire Perimeter |
| Retardant/Mud Pit | US or State Hwy |
| Safety Zone | Primary or County Road |
| Sling Site | Arterial or Collector Road |
| Stream Crossing | Forest Service Road |
| Water Source | Minor or Local Road |
| Restricted Water Source | Highway Mile Marker |
| Water Development or Draft Site | |
| Value at Risk | |



NARROW ROAD
TIGHT SWITCHBACKS
HIGH CLEARANCE
4WD ONLY



SOUTHWEST AREA
INCIDENT MANAGEMENT TEAM 3

9/26/2020 2215
Acres from IR (MMA)
North American 1983 Datum,
LatLong Grid