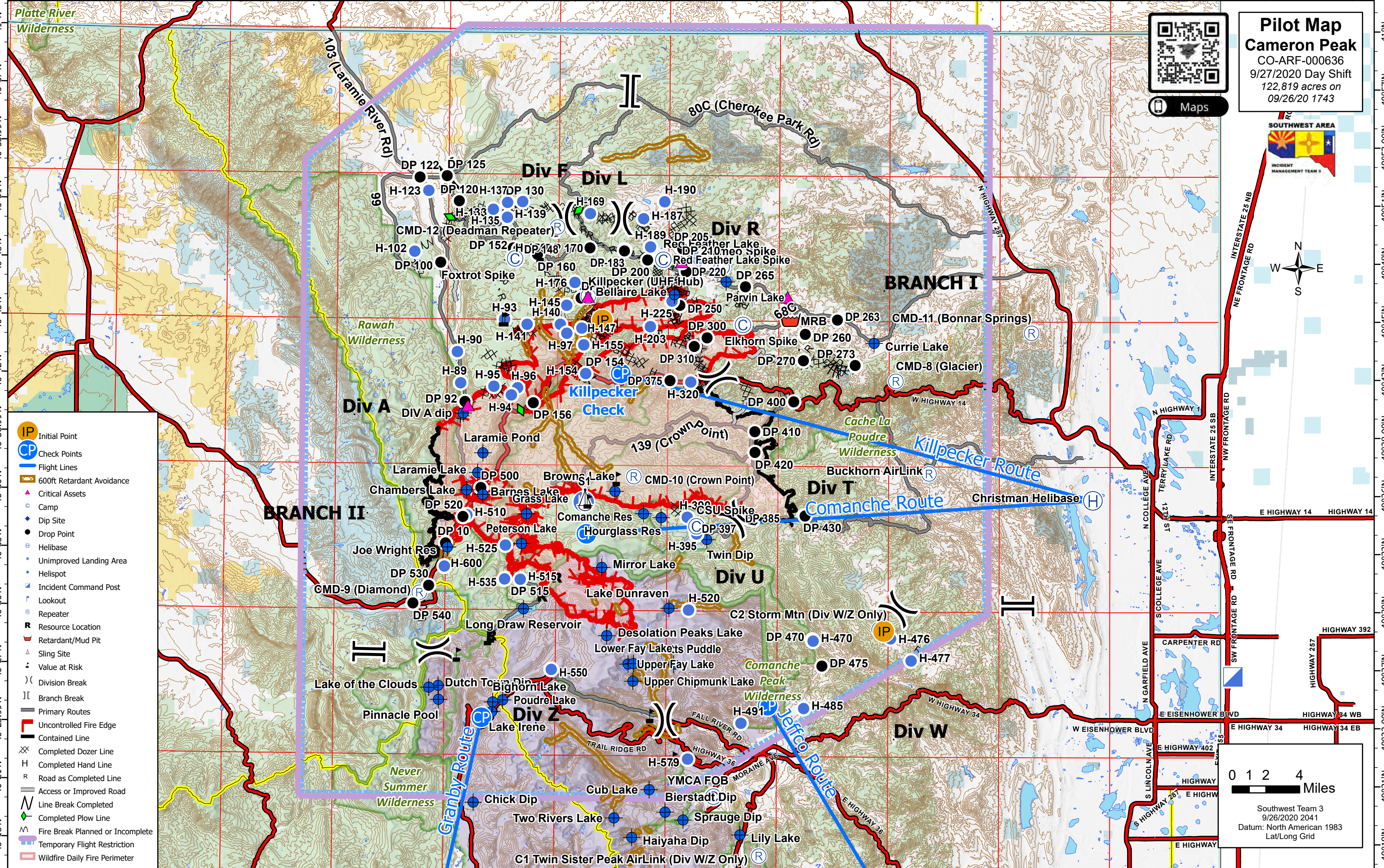


106°21'W 106°18'W 106°15'W 106°12'W 106°9'W 106°6.01'W 106°3'W 106°W 105°57'W 105°54'W 105°51'W 105°48'W 105°45'W 105°42'W 105°39'W 105°33'W 105°30'W 105°27'W 105°24'W 105°18'W 105°15'W 105°12'W 105°9'W 105°6.01'W 105°3'W 105°W 104°57'W 104°54'W



- Initial Point
- Check Points
- Flight Lines
- 600ft Retardant Avoidance
- Critical Assets
- Camp
- Dip Site
- Drop Point
- Helibase
- Unimproved Landing Area
- Helispot
- Incident Command Post
- Lookout
- Repeater
- Resource Location
- Retardant/Mud Pit
- Sling Site
- Value at Risk
- Division Break
- Branch Break
- Primary Routes
- Uncontrolled Fire Edge
- Contained Line
- Completed Dozer Line
- Completed Hand Line
- Road as Completed Line
- Access or Improved Road
- Line Break Completed
- Completed Plow Line
- Fire Break Planned or Incomplete
- Temporary Flight Restriction
- Wildfire Daily Fire Perimeter



**Pilot Map**  
**Cameron Peak**  
 CO-ARF-000636  
 9/27/2020 Day Shift  
 122,819 acres on  
 09/26/20 1743

Maps



Southwest Team 3  
 9/26/2020 2041  
 Datum: North American 1983  
 Lat/Long Grid

106°21'W 106°18'W 106°15'W 106°12'W 106°9'W 106°6.01'W 106°3'W 106°W 105°57'W 105°54'W 105°51'W 105°48'W 105°45'W 105°42'W 105°39'W 105°33'W 105°30'W 105°27'W 105°24'W 105°18'W 105°15'W 105°12'W 105°9'W 105°6.01'W 105°3'W 105°W 104°57'W 104°54'W



FeatureCategory	Label	Comments	LatWGS84_DDM	LongWGS84_DDE	Elevation
Dip Site	Barnes Lake		40° 35.940' N	105° 49.999' W	9,100
Dip Site	Bellaire Lake		40° 46.330' N	105° 37.110' W	
Dip Site	Bierstadt Dip		40° 19.599' N	105° 37.500' W	
Dip Site	Bighorn Lake		40° 25.226' N	105° 49.200' W	
Dip Site	Browns Lake		40° 36.160' N	105° 41.049' W	10,500
Dip Site	Chambers Lake		40° 36.170' N	105° 51.099' W	9,150
Dip Site	Chick Dip		40° 20.034' N	105° 50.457' W	
Dip Site	Comanche Res		40° 35.101' N	105° 39.101' W	9,400
Dip Site	Cub Lake		40° 20.756' N	105° 38.583' W	
Dip Site	Currie Lake	LUA 1282AT20K5113	40° 43.880' N	105° 23.530' W	
Dip Site	Desolation Peaks Lake		40° 28.694' N	105° 41.530' W	8,600
Dip Site	DIV A dip		40° 40.137' N	105° 51.386' W	
Dip Site	Dutch Town Dip		40° 26.057' N	105° 52.902' W	9,900
Dip Site	Grass Lake	small pond	40° 34.960' N	105° 47.029' W	
Dip Site	Haiyaha Dip		40° 18.282' N	105° 39.734' W	9,400
Dip Site	Hourglass Res		40° 34.816' N	105° 37.907' W	9,400
Dip Site	Joe Wright Res		40° 33.210' N	105° 52.359' W	9,920
Dip Site	Lake Dunraven		40° 30.135' N	105° 37.330' W	
Dip Site	Lake Irene		40° 24.724' N	105° 49.264' W	
Dip Site	Lake of the Clouds		40° 25.953' N	105° 53.529' W	9,400
Dip Site	Laramie Lake		40° 37.070' N	105° 50.359' W	9,500
Dip Site	Laramie Pond	small pond	40° 38.090' N	105° 50.019' W	
Dip Site	Lilly Lake		40° 18.447' N	105° 32.443' W	
Dip Site	Long Draw Reservoir	Water may be used in RMNP	40° 30.048' N	105° 47.178' W	
Dip Site	Lower Fay Lake		40° 27.263' N	105° 39.706' W	
Dip Site	Mirror Lake		40° 32.220' N	105° 41.900' W	
Dip Site	Parvin Lake	Approved 9/18 George Schitzler, Wildlife Manager (970) 420-1466	40° 47.020' N	105° 33.600' W	
Dip Site	Peterson Lake		40° 33.420' N	105° 47.349' W	9,500
Dip Site	Pinnacle Pool		40° 25.330' N	105° 52.872' W	
Dip Site	Potts Puddle		40° 27.249' N	105° 36.984' W	
Dip Site	Potters Lake		40° 25.332' N	105° 48.534' W	
Dip Site	Sprauge Dip		40° 19.199' N	105° 36.284' W	
Dip Site	Twin Dip		40° 33.698' N	105° 34.808' W	
Dip Site	Two Rivers Lake		40° 19.281' N	105° 40.949' W	
Dip Site	Upper Chipmunk Lake		40° 26.353' N	105° 39.736' W	
Dip Site	Upper Fay Lake		40° 27.235' N	105° 40.073' W	
Helibase	Christman Helibase		40° 35.780' N	105° 08.659' W	5,150
Helispot	H-102	LUA1282X920K5017	40° 48.470' N	105° 54.780' W	8,400
Helispot	H-123	Type 2	40° 51.619' N	105° 53.866' W	8,350
Helispot	H-133	Type 3. Private. No LUA. Minimize use. Verbal authorization from Scott Butcher, Diamond Trail Ranch (970) 491-9659	40° 50.677' N	105° 49.465' W	10,100
Helispot	H-135	Type 2 and Type 3	40° 50.271' N	105° 48.506' W	10,070
Helispot	H-137	Type 2	40° 51.038' N	105° 48.500' W	10,076
Helispot	H-139	Approved for Type 2 and Type 3	40° 51.088' N	105° 47.476' W	10,250
Helispot	H-140	Approved for Type 2 or Type 3	40° 44.763' N	105° 44.843' W	
Helispot	H-141	10,200' Approved 9/14 Type 2/3	40° 44.750' N	105° 47.100' W	
Helispot	H-145	9,950' Approved 9/14 Type 2/3	40° 44.750' N	105° 44.420' W	
Helispot	H-147	10,000' Approved 9/14 Type 2/3	40° 45.750' N	105° 44.420' W	
Helispot	H-150	10,000' Type 2/3 requires dust abatement prior to use	40° 44.577' N	105° 43.385' W	
Helispot	H-154	Approved Type 2, Could fit a Type 1 or multiple aircraft for PSD ops.	40° 48.081' N	105° 47.950' W	9,900
Helispot	H-155	7,600' WATCH FOR POWERLINES Approved Type 2/3	40° 42.229' N	105° 43.094' W	
Helispot	H-169	Requires dust abatement prior to use	40° 43.710' N	105° 43.240' W	
Helispot	H-176	Approved for T-2 or T-3 Helicopter. Trees at NE corner	40° 50.496' N	105° 42.864' W	9,500
Helispot	H-185	Type I/II elev 10,900'	40° 46.933' N	105° 43.875' W	
Helispot	H-187		40° 48.622' N	105° 40.513' W	9,500
Helispot	H-189		40° 50.250' N	105° 39.239' W	8,600
Helispot	H-190	Type I/II elev 10,900'	40° 48.796' N	105° 38.756' W	8,740
Helispot	H-203	8,400' Type 2/3. Private. No LUA. Minimize use. Redfeather FD Chief Hill (720) 427-3893 indicates unknown ownership and they use it all the time.	40° 51.135' N	105° 37.810' W	
Helispot	H-225	9,2000' Type 2/3 requires dust abatement	40° 44.678' N	105° 38.730' W	8,700
Helispot	H-320	Type 3 only	40° 46.006' N	105° 37.266' W	7,225
Helispot	H-390	Type 2/3. Private. No LUA. Minimize use. Verbal authorization from owner Kevin and Vaundeen Bachus (970) 491-9659	40° 41.830' N	105° 35.960' W	
Helispot	H-395	Approved for Type 3 or Type 2	40° 34.845' N	105° 36.137' W	9,100
Helispot	H-470	9,200' Approved 9/15 Type 2/3	40° 33.982' N	105° 35.495' W	
Helispot	H-476	7,800' Approved 9/14 Type 2/3	40° 28.482' N	105° 27.567' W	
Helispot	H-477	8,500' Type II/III	40° 28.620' N	105° 22.330' W	
Helispot	H-485	8,000 type II/III Road into spot	40° 27.480' N	105° 20.935' W	
Helispot	H-491	Track # days A/C land at site for LUA 1282AT20K5051	40° 24.996' N	105° 28.186' W	
Helispot	H-510	8,000 Approved 9/15 Type 2/3	40° 24.216' N	105° 32.415' W	
Helispot	H-515	Approved for Type 3 only	40° 34.877' N	105° 51.066' W	9,440
Helispot	H-520	Type II/III elev 10,200'	40° 31.573' N	105° 47.410' W	
Helispot	H-525	8,400' Approved 9/15 Type 2/3	40° 30.048' N	105° 36.004' W	
Helispot	H-535	Type II/III elev 9,900'	40° 33.333' N	105° 48.438' W	
Helispot	H-550	Type II/III elev 10,300'	40° 31.583' N	105° 48.473' W	
Helispot	H-579	Parking lot AVC. Requires coordination with ROMO.	40° 26.930' N	105° 45.260' W	
Helispot	H-600	RMNP approved site	40° 22.349' N	105° 36.004' W	
Helispot	H-89	Type 2 and Type 3	40° 32.220' N	105° 52.559' W	10,400
Helispot	H-90	40° 41.697' N	105° 51.575' W		
Helispot	H-93	Helispot along 103rd in Div A. Approved Type 2.	40° 43.307' N	105° 51.818' W	8,400
Helispot	H-94	Approved for Type 2	40° 45.003' N	105° 48.637' W	9,670
Helispot	H-95	10,100' Type 2/3	40° 41.093' N	105° 48.127' W	
Helispot	H-96	10,100' Approved 9/14 Type 2/3	40° 41.533' N	105° 49.317' W	
Helispot	H-97	10,000' Type 2/3	40° 41.468' N	105° 47.707' W	
Lookout		10,100' Type 2/3 requires dust abatement prior to use	40° 44.303' N	105° 44.400' W	10,700
Mobile Weather Unit	IRAWS 28	Deadman Lookout Tower	40° 49.808' N	105° 45.106' W	
Mobile Weather Unit	IRAWS 29	CSU Campus	40° 34.080' N	105° 35.339' W	9,020
Mobile Weather Unit	IRAWS 32	FR139 Crown Pointe	40° 40.395' N	105° 35.910' W	10,250
Mobile Weather Unit	IRAWS 35	Deadman Road, elev 9,531'	40° 48.619' N	105° 40.423' W	8,600
Repeater	Buckhorn AirLink	Chambers Lake	40° 36.000' N	105° 51.059' W	9,200
Repeater	C1 Twin Sister Peak AirLink (Div W/Z Only)	Black	40° 37.149' N	105° 19.772' W	
Repeater	C2 Storm Mtn (Div W/Z Only)	Red	40° 17.359' N	105° 31.159' W	
Repeater	CMD-10 (Crown Point)	Red	40° 29.096' N	105° 23.108' W	
Repeater	CMD-11 (Bonnar Springs)	Red	40° 36.925' N	105° 39.776' W	11,600
Repeater	CMD-12 (Deadman Repeater)	Red	40° 44.431' N	105° 12.840' W	6,800
Repeater	CMD-8 (Glacier)	Red	40° 49.789' N	105° 45.094' W	10,700
Repeater	CMD-9 (Diamond)	Red	40° 41.925' N	105° 22.042' W	7,300
Repeater	Killpecker (UHF Hub)	Blue	40° 30.851' N	105° 54.230' W	11,600
Resource Location		Fish Study Project Tag Collection Equipment	40° 31.665' N	105° 44.939' W	9,600
Resource Location		Data shack (wrapped)	40° 28.649' N	105° 49.325' W	
Resource Location		Snow tell (wrapped)	40° 30.691' N	105° 45.917' W	
Retardant/Mud Pit	MRB	Mobile Retardant Base	40° 45.060' N	105° 29.229' W	
Sling Site	S1	Sling for spike camps	40° 35.710' N	105° 43.080' W	
Unimproved Landing Area		wide open meadow/ helispot for Div U spike camp	40° 35.601' N	105° 43.157' W	
Value at Risk		Historic Cabins	40° 45.009' N	105° 48.553' W	9,700
Value at Risk		Historic Cabins	40° 45.007' N	105° 48.722' W	9,700
Value at Risk		SNOTEL weather station	40° 48.343' N	105° 46.202' W	10,240
Value at Risk		Ditch Cabin	40° 27.658' N	105° 51.637' W	10,200
Value at Risk		Cabin	40° 28.654' N	105° 49.338' W	10,200
Value at Risk		Cabin #3 (3 structures wrapped, plumbed, sprinklers)	40° 28.530' N	105° 49.530' W	
Value at Risk		cabin remains	40° 35.629' N	105° 42.860' W	