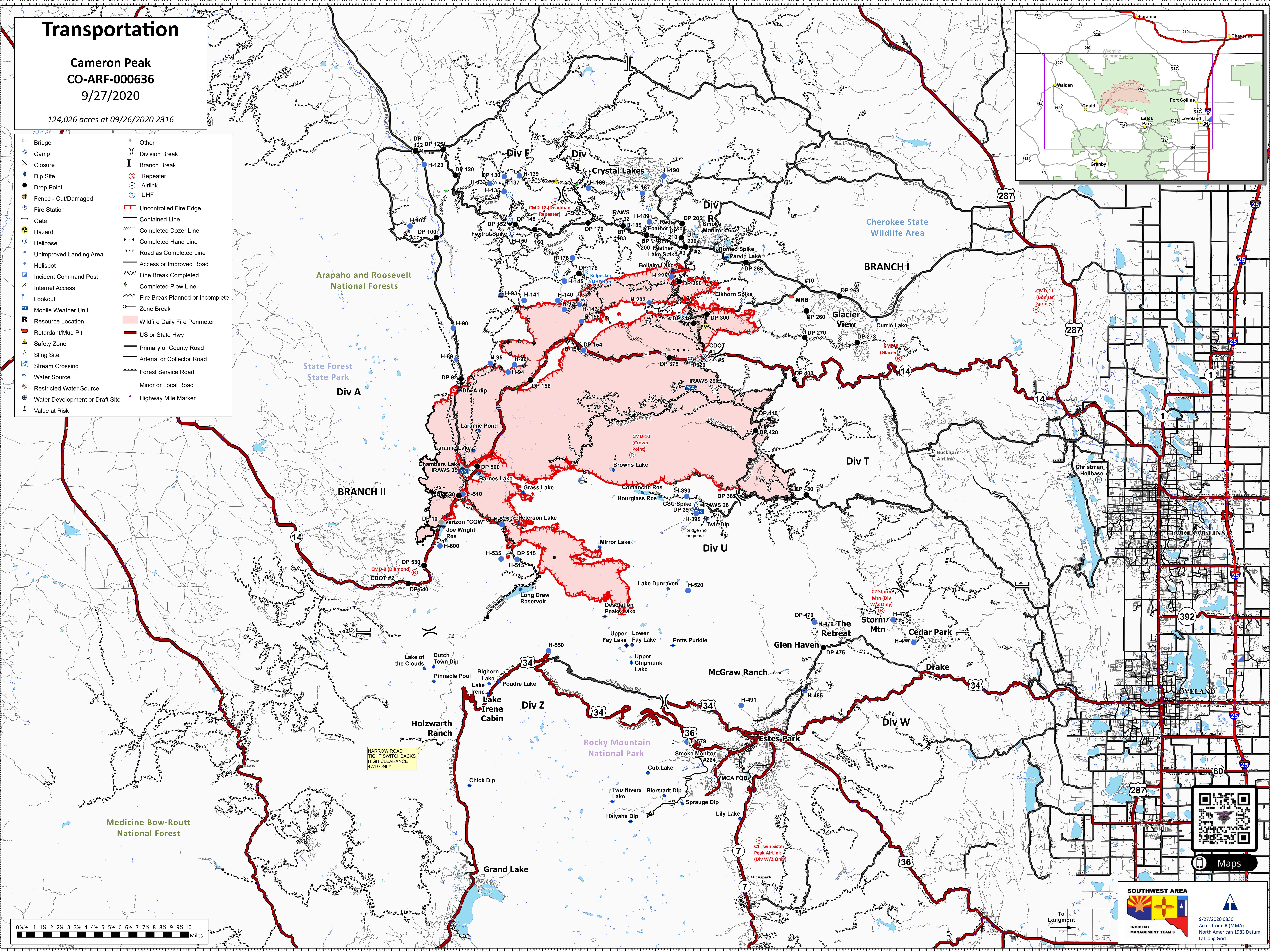
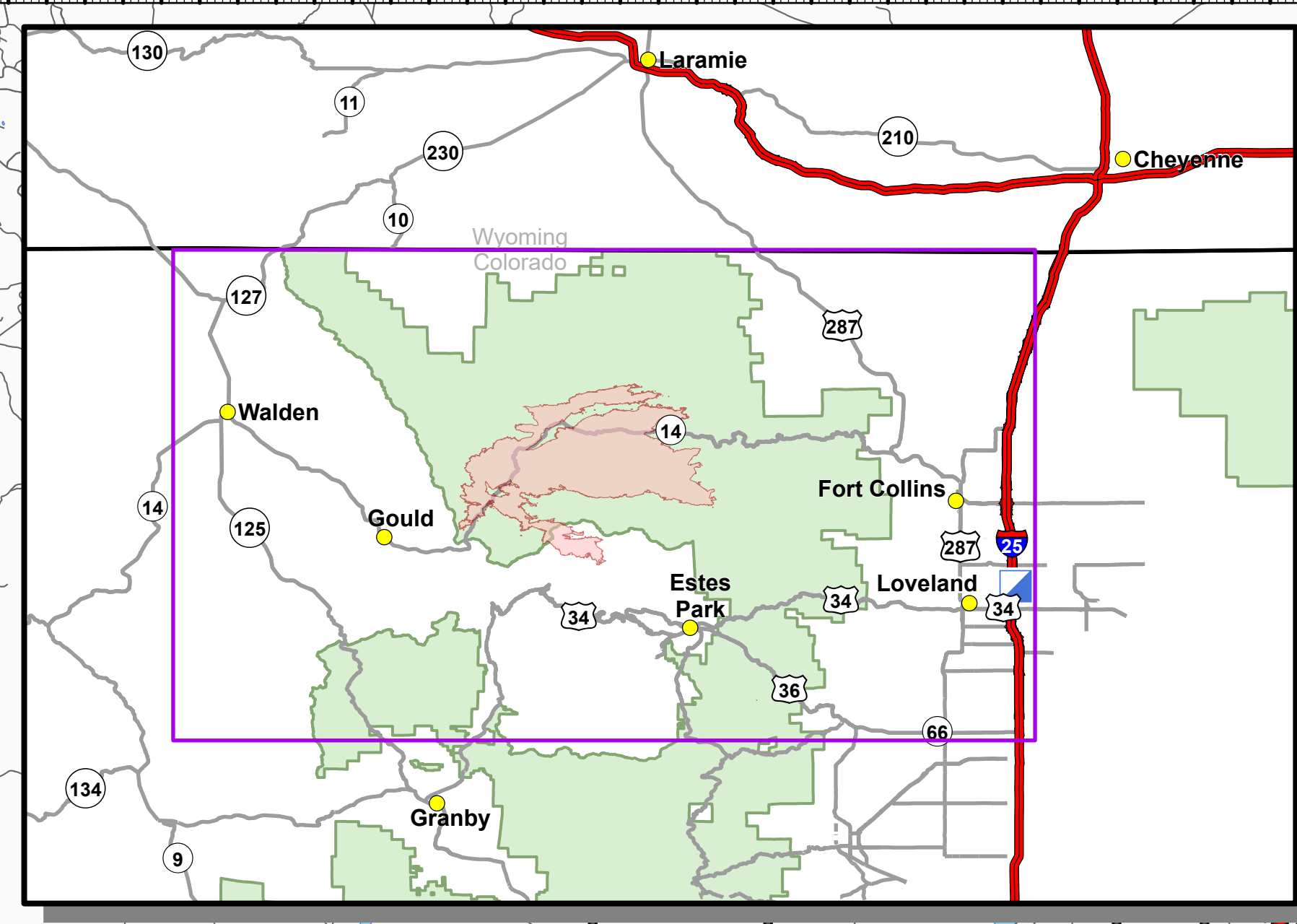


# Transportation

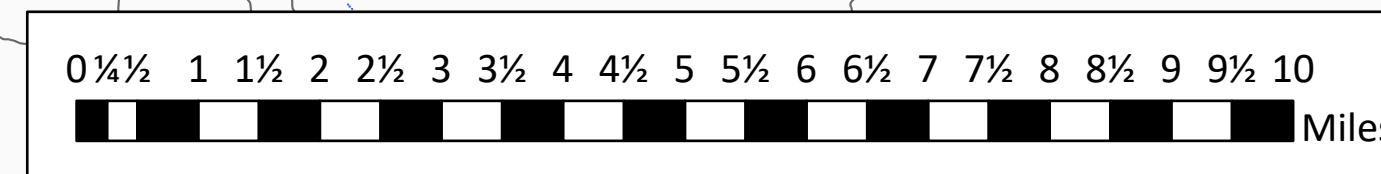
**Cameron Peak**  
**CO-ARF-000636**  
9/27/2020

124,026 acres at 09/26/2020 2316

- |                                   |                                    |
|-----------------------------------|------------------------------------|
| • Bridge                          | • Other                            |
| • Camp                            | • Division Break                   |
| • Closure                         | • Branch Break                     |
| • Dip Site                        | • Repeater                         |
| • Drop Point                      | • Airlink                          |
| • Fence - Cut/Damaged             | • UHF                              |
| • Fire Station                    | • Uncontrolled Fire Edge           |
| • Gate                            | • Contained Line                   |
| • Hazard                          | • Completed Dozer Line             |
| • Helibase                        | • Completed Hand Line              |
| • Unimproved Landing Area         | • Road as Completed Line           |
| • Helispot                        | • Access or Improved Road          |
| • Incident Command Post           | • Line Break Completed             |
| • Internet Access                 | • Completed Plow Line              |
| • Lookout                         | • Fire Break Planned or Incomplete |
| • Mobile Weather Unit             | • Zone Break                       |
| • Resource Location               | • Wildfire Daily Fire Perimeter    |
| • Retardant/Mud Pit               | • US or State Hwy                  |
| • Safety Zone                     | • Primary or County Road           |
| • Sling Site                      | • Arterial or Collector Road       |
| • Stream Crossing                 | • Forest Service Road              |
| • Water Source                    | • Minor or Local Road              |
| • Restricted Water Source         | • Highway Mile Marker              |
| • Water Development or Draft Site |                                    |
| • Value at Risk                   |                                    |



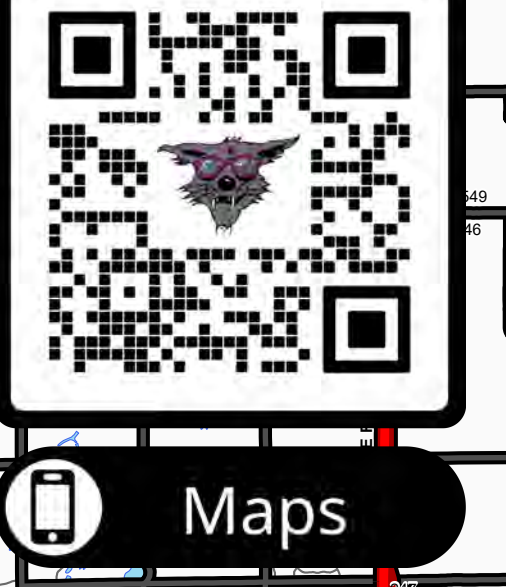
NARROW ROAD  
TIGHT SWITCHBACKS  
HIGH CLEARANCE  
4WD ONLY



To Longmont

**SOUTHWEST AREA**  
INCIDENT MANAGEMENT TEAM 3

9/27/2020 0830  
Acres from IR (NMA)  
North American 1983 Datum,  
LatLong Grid



Maps