

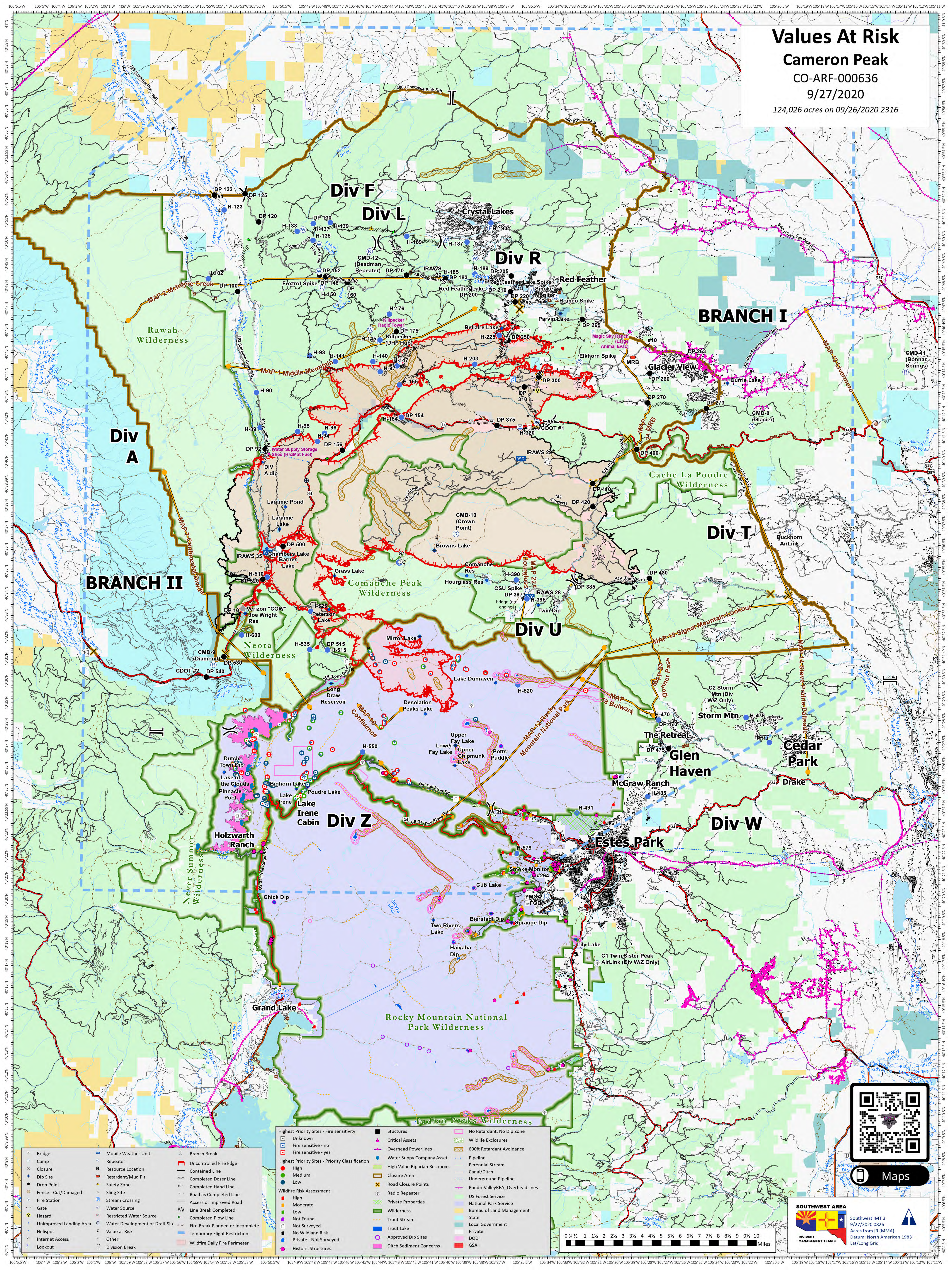
Values At Risk

Cameron Peak

CO-ARF-000636

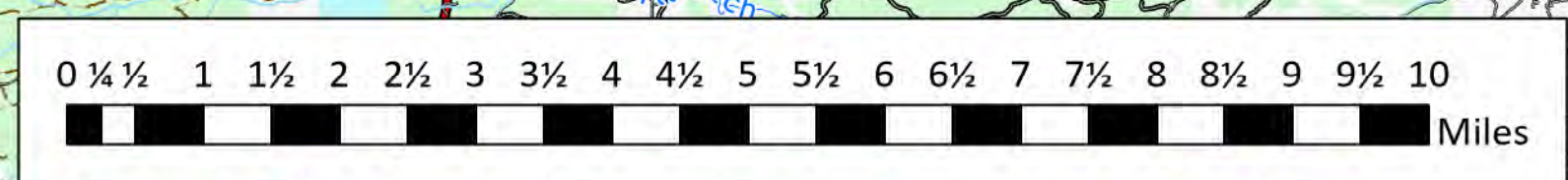
9/27/2020

124,026 acres on 09/26/2020 2316



Bridge	Mobile Weather Unit	Branch Break
Camp	Repeater	Uncontrolled Fire Edge
Closure	Resource Location	Contained Line
Dip Site	Retardant/Mud Pit	Completed Dozer Line
Drop Point	Safety Zone	Completed Hand Line
Fence - Cut/Damaged	Sling Site	Road as Completed Line
Fire Station	Stream Crossing	Access or Improved Road
Gate	Water Source	Line Break Completed
Hazard	Restricted Water Source	Completed Plow Line
Unimproved Land Area	Water Development or Draft Site	Fire Break Planned or Incomplete
Hotspot	Value at Risk	Temporary Flight Restriction
Internet Access	Other	Wildfire Daily Fire Perimeter
Lookout	X Division Break	

Highest Priority Sites - Fire sensitivity	Structures	No Retardant, No Dip Zone
Unknown	Critical Assets	Wildlife Enclosures
Fire sensitive - no	Overhead Powerlines	600ft Retardant Avoidance
Fire sensitive - yes	Water Supply Company Asset	Pipeline
Highest Priority Sites - Priority Classification	High Value Riparian Resources	Perennial Stream
High	Closure Area	Canal/Ditch
Medium	Road Closure Points	Underground Pipeline
Low	Radio Repeater	PoudreValleyREA_OverheadLines
Wildfire Risk Assessment	Private Properties	US Forest Service
High	Wilderness	National Park Service
Moderate	Bureau of Land Management	State
Low	Trout Stream	Local Government
Not Found	Trout Lake	Private
Not Surveyed	Private - Not Surveyed	DOD
No Wildland Risk	Historic Structures	GSA
Private - Not Surveyed		
Historic Structures		



Maps

SOUTHWEST AREA
INCIDENT MANAGEMENT TEAM 3

Southwest IMT 3
9/27/2020 0826
Acres from IR (MMA)
Datum: North American 1983
Lat/Long Grid