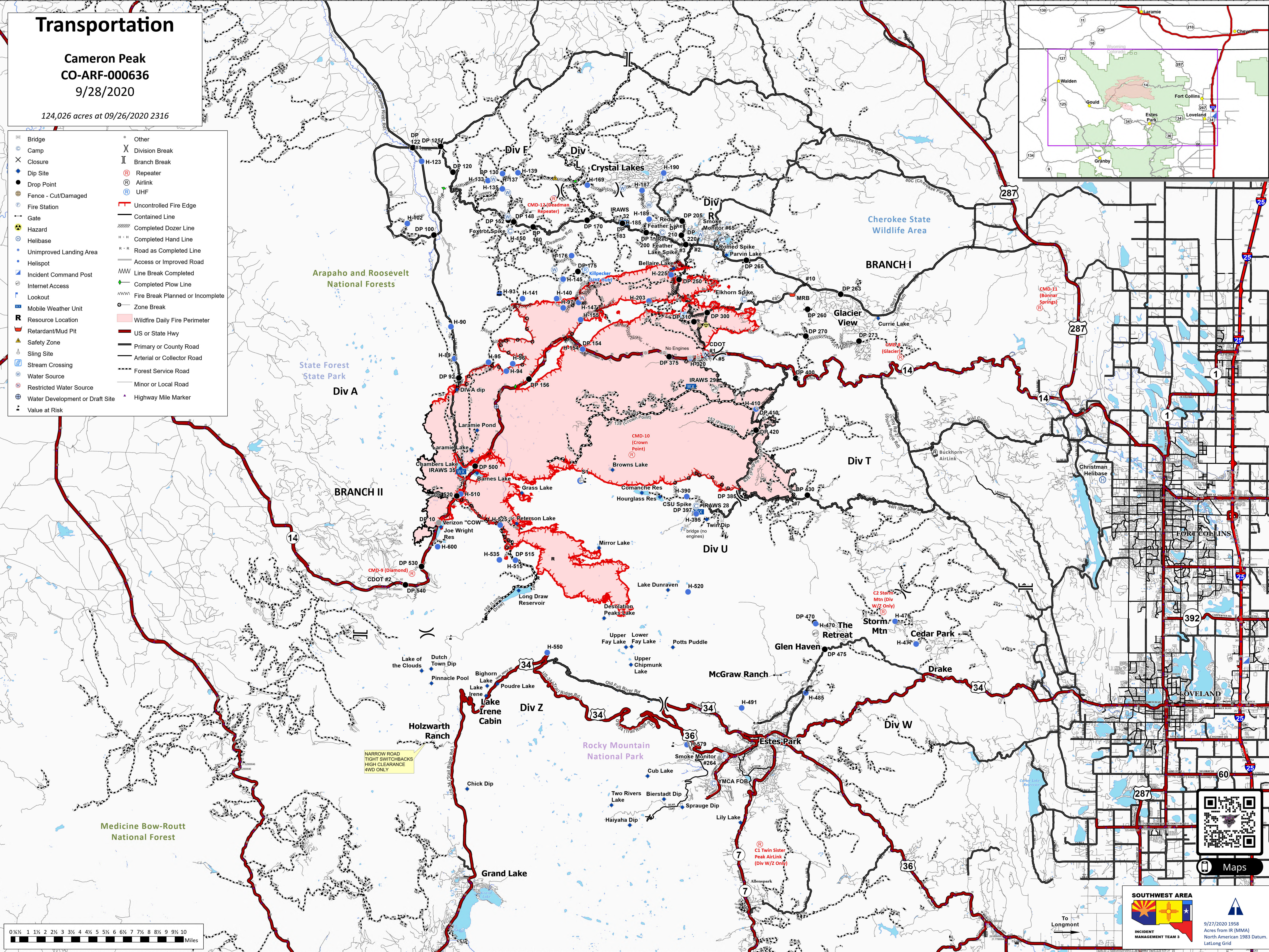
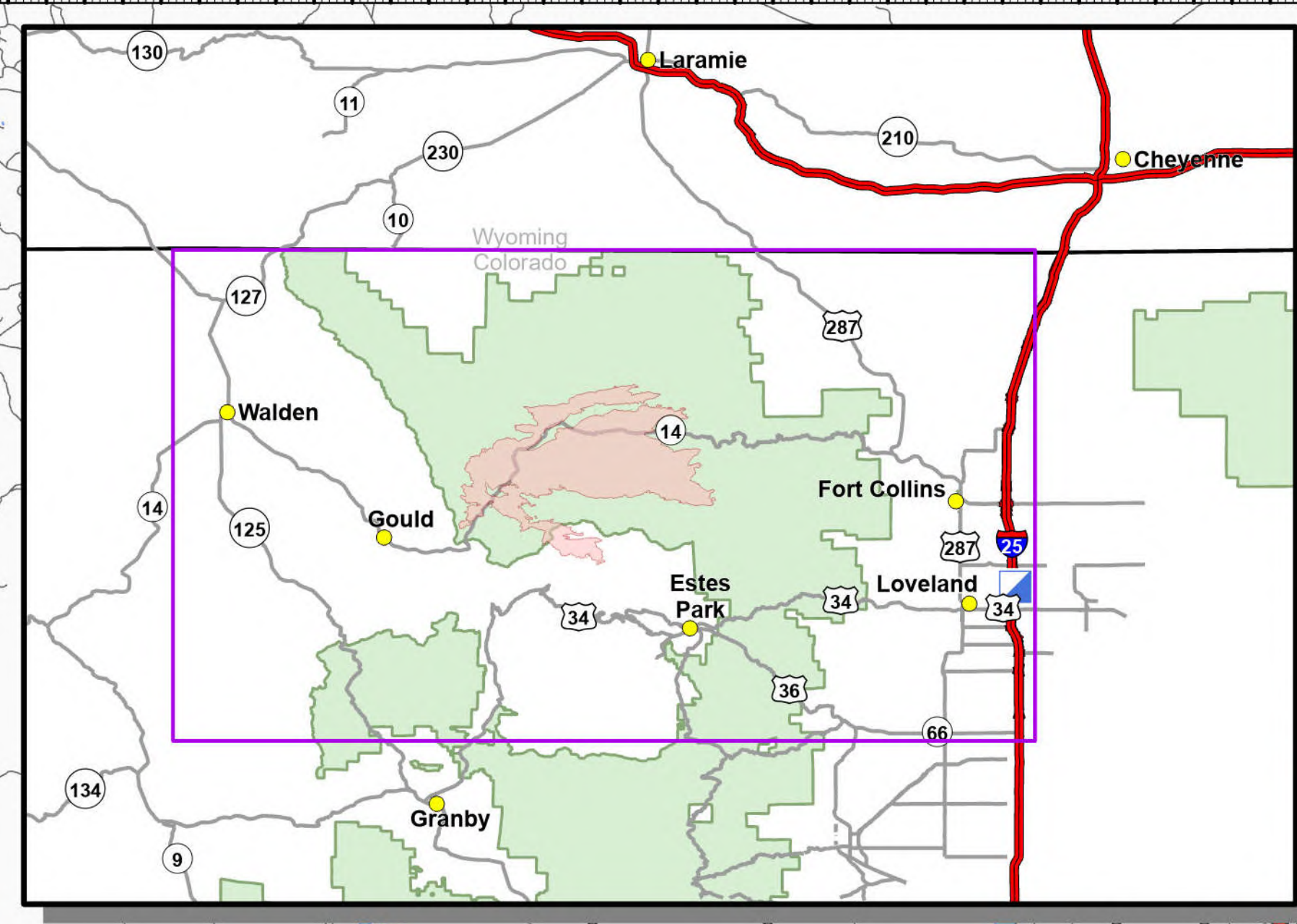


Transportation

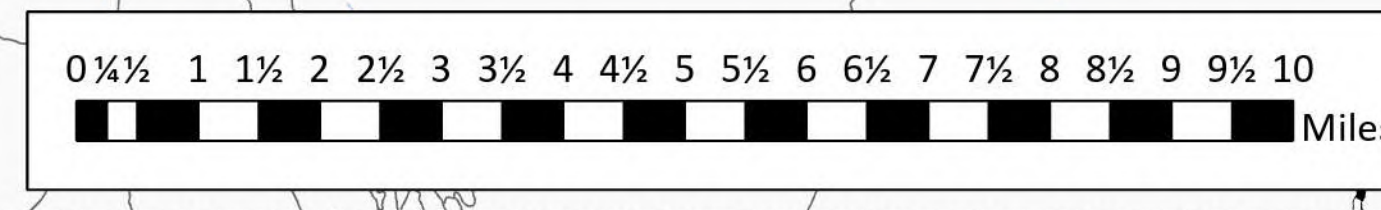
Cameron Peak
CO-ARF-000636
9/28/2020

124,026 acres at 09/26/2020 2316

- | | |
|-----------------------------------|------------------------------------|
| • Bridge | • Other |
| • Camp | ⌘ Division Break |
| ✕ Closure | ⌘ Branch Break |
| • Dip Site | • Repeater |
| • Drop Point | • Airlink |
| • Fence - Cut/Damaged | • UHF |
| • Fire Station | — Uncontrolled Fire Edge |
| • Gate | — Contained Line |
| • Hazard | ⋯ Completed Dozer Line |
| • Helibase | — Completed Hand Line |
| • Unimproved Landing Area | — Road as Completed Line |
| • Helispot | — Access or Improved Road |
| • Incident Command Post | ⋯ Line Break Completed |
| • Internet Access | — Completed Plow Line |
| • Lookout | — Fire Break Planned or Incomplete |
| • Mobile Weather Unit | • Zone Break |
| • Resource Location | — Wildfire Daily Fire Perimeter |
| • Retardant/Mud Pit | — US or State Hwy |
| • Safety Zone | — Primary or County Road |
| • Sling Site | — Arterial or Collector Road |
| • Stream Crossing | — Forest Service Road |
| • Water Source | — Minor or Local Road |
| • Restricted Water Source | • Highway Mile Marker |
| • Water Development or Draft Site | |
| • Value at Risk | |



NARROW ROAD
TIGHT SWITCHBACKS
HIGH CLEARANCE
4WD ONLY



SOUTHWEST AREA
INCIDENT MANAGEMENT TEAM 3

9/27/2020 1958
Acres from IR (NMA)
North American 1983 Datum,
LatLong Grid