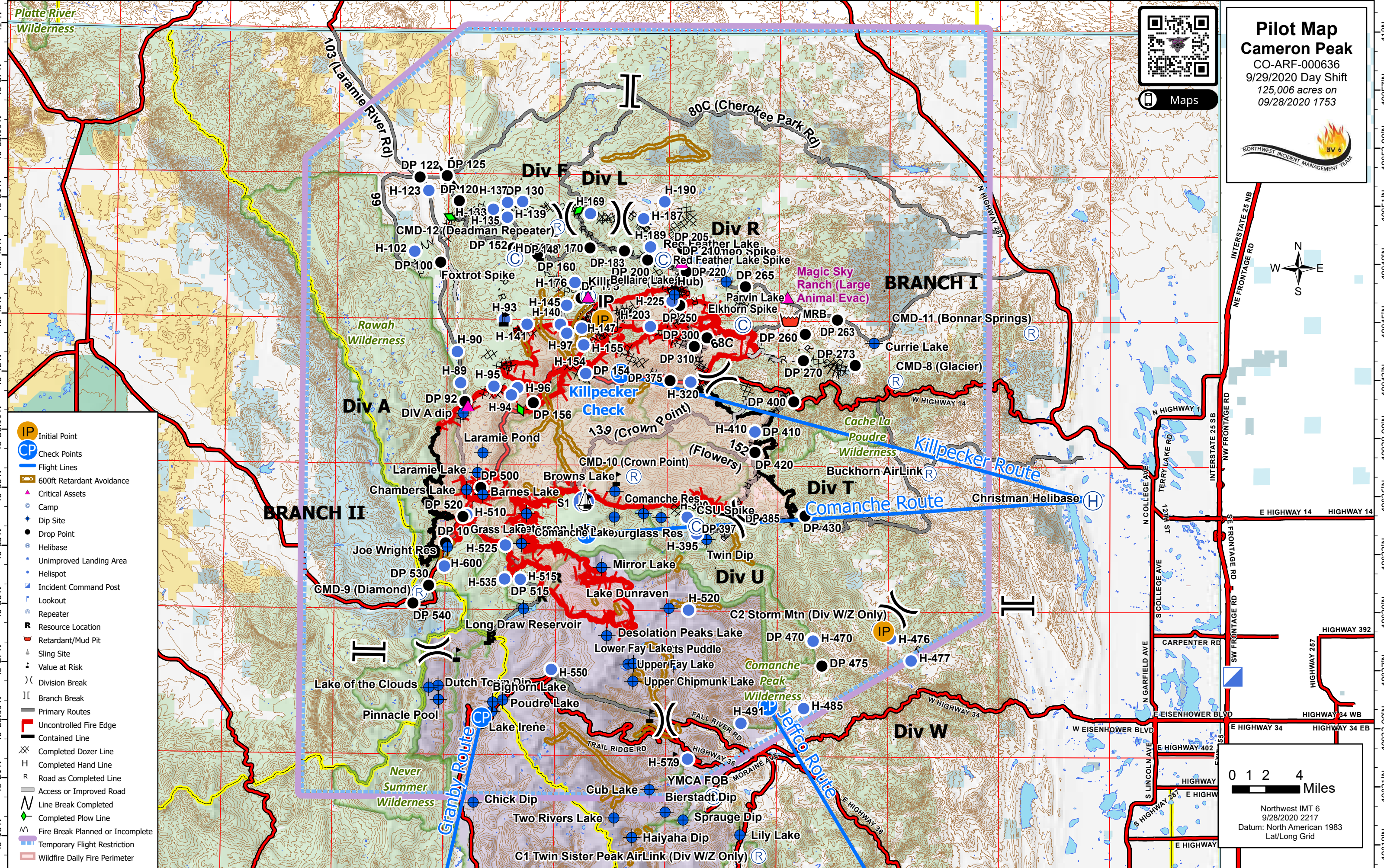
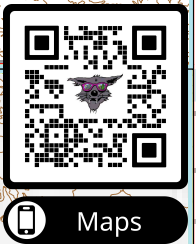


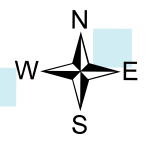
106°21'W 106°18'W 106°15'W 106°12'W 106°9'W 106°6.01'W 106°3'W 106°W 105°57'W 105°54'W 105°51'W 105°48'W 105°45'W 105°42'W 105°39'W 105°33'W 105°30'W 105°27'W 105°24'W 105°18'W 105°15'W 105°12'W 105°9'W 105°6.01'W 105°3'W 105°W 104°57'W 104°54'W



- IP Initial Point
- CP Check Points
- Flight Lines
- 600ft Retardant Avoidance
- Critical Assets
- Camp
- Dip Site
- Drop Point
- Helibase
- Unimproved Landing Area
- Helispot
- Incident Command Post
- Lookout
- Repeater
- R Resource Location
- Retardant/Mud Pit
- Sling Site
- Value at Risk
- Division Break
- Branch Break
- Primary Routes
- Uncontrolled Fire Edge
- Contained Line
- Completed Dozer Line
- Completed Hand Line
- Road as Completed Line
- Access or Improved Road
- Line Break Completed
- Completed Plow Line
- Fire Break Planned or Incomplete
- Temporary Flight Restriction
- Wildfire Daily Fire Perimeter



Pilot Map
Cameron Peak
 CO-ARF-000636
 9/29/2020 Day Shift
 125,006 acres on
 09/28/2020 1753



0 1 2 4 Miles

Northwest IMT 6
 9/28/2020 2217
 Datum: North American 1983
 Lat/Long Grid

106°21'W 106°18'W 106°15'W 106°12'W 106°9'W 106°6.01'W 106°3'W 106°W 105°57'W 105°54'W 105°51'W 105°48'W 105°45'W 105°42'W 105°39'W 105°33'W 105°30'W 105°27'W 105°24'W 105°18'W 105°15'W 105°12'W 105°9'W 105°6.01'W 105°3'W 105°W 104°57'W 104°54'W