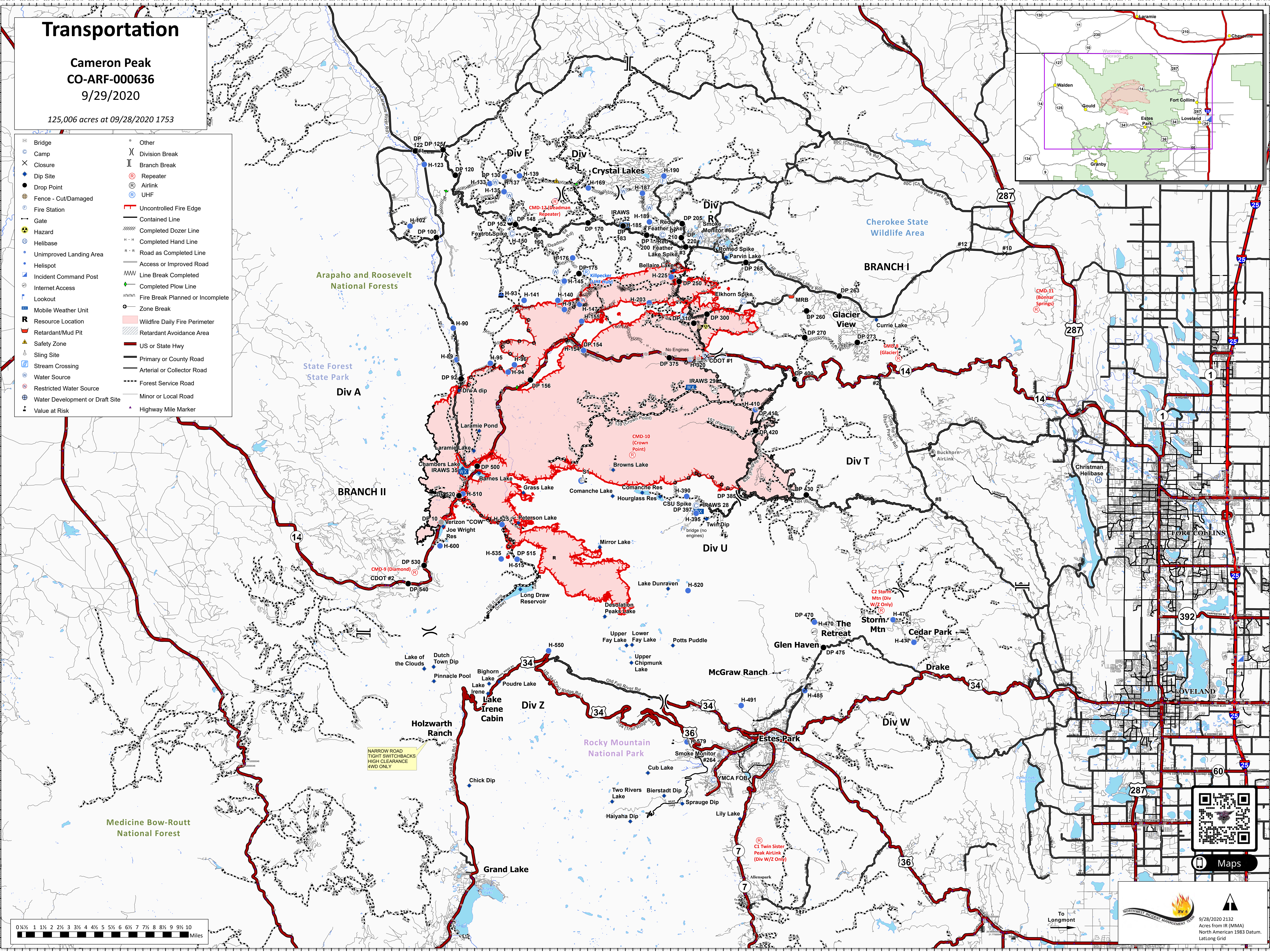
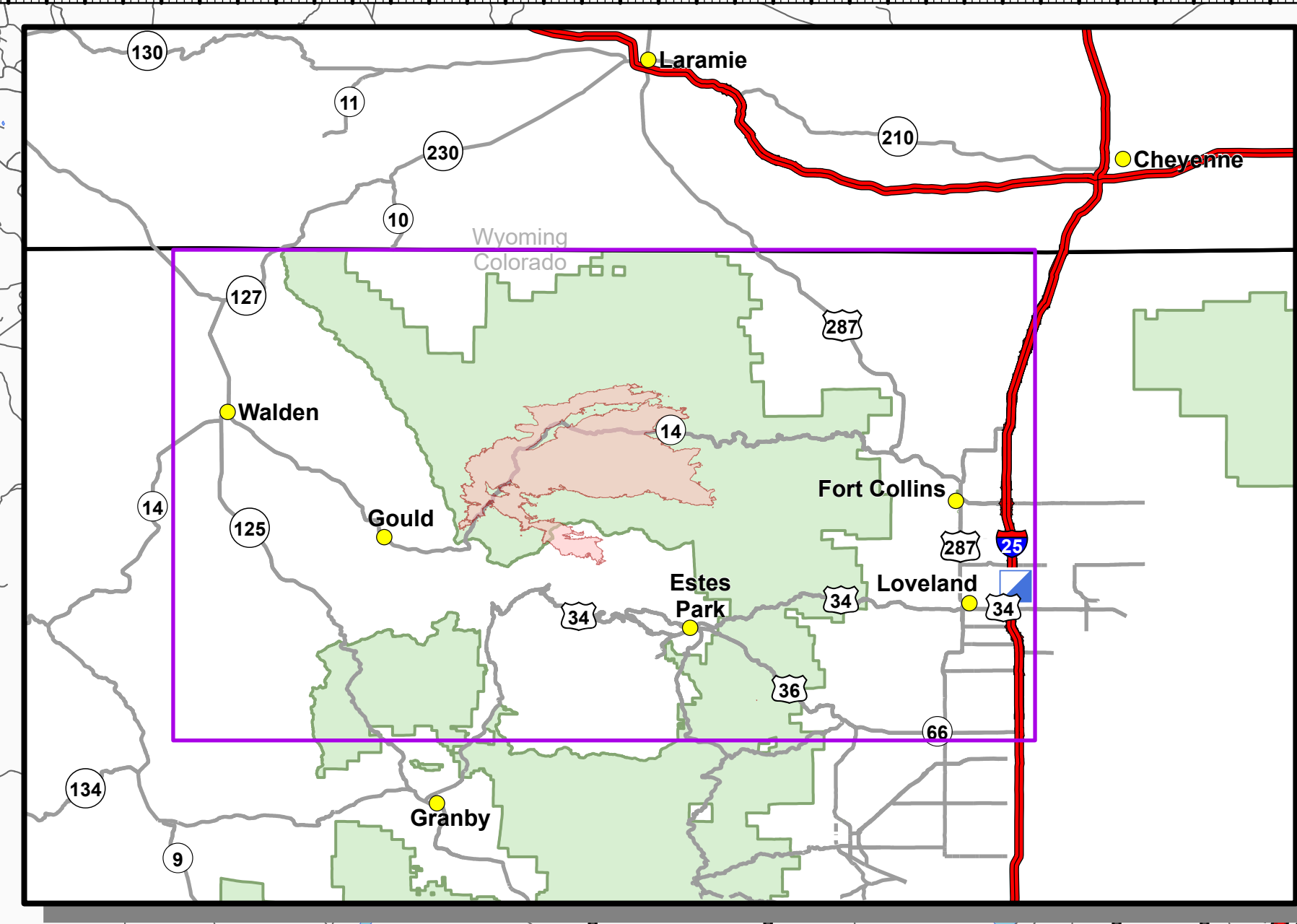


Transportation

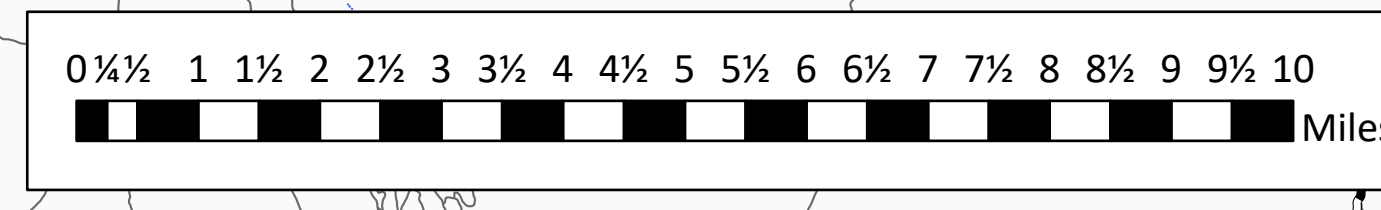
Cameron Peak
CO-ARF-000636
9/29/2020

125,006 acres at 09/28/2020 1753

- | | |
|---------------------------------|----------------------------------|
| Bridge | Other |
| Camp | Division Break |
| Closure | Branch Break |
| Dip Site | Repeater |
| Drop Point | Airlink |
| Fence - Cut/Damaged | UHF |
| Fire Station | Uncontrolled Fire Edge |
| Gate | Contained Line |
| Hazard | Completed Dozer Line |
| Helibase | Completed Hand Line |
| Unimproved Landing Area | Road as Completed Line |
| Helispot | Access or Improved Road |
| Incident Command Post | Line Break Completed |
| Internet Access | Completed Plow Line |
| Lookout | Fire Break Planned or Incomplete |
| Mobile Weather Unit | Zone Break |
| Resource Location | Wildfire Daily Fire Perimeter |
| Retardant/Mud Pit | Retardant Avoidance Area |
| Safety Zone | US or State Hwy |
| Sling Site | Primary or County Road |
| Stream Crossing | Arterial or Collector Road |
| Water Source | Forest Service Road |
| Restricted Water Source | Minor or Local Road |
| Water Development or Draft Site | Highway Mile Marker |
| Value at Risk | |



NARROW ROAD
TIGHT SWITCHBACKS
HIGH CLEARANCE
4WD ONLY



To Longmont



9/28/2020 2132
Acres from IR (NMA)
North American 1983 Datum,
LatLong Grid



Maps