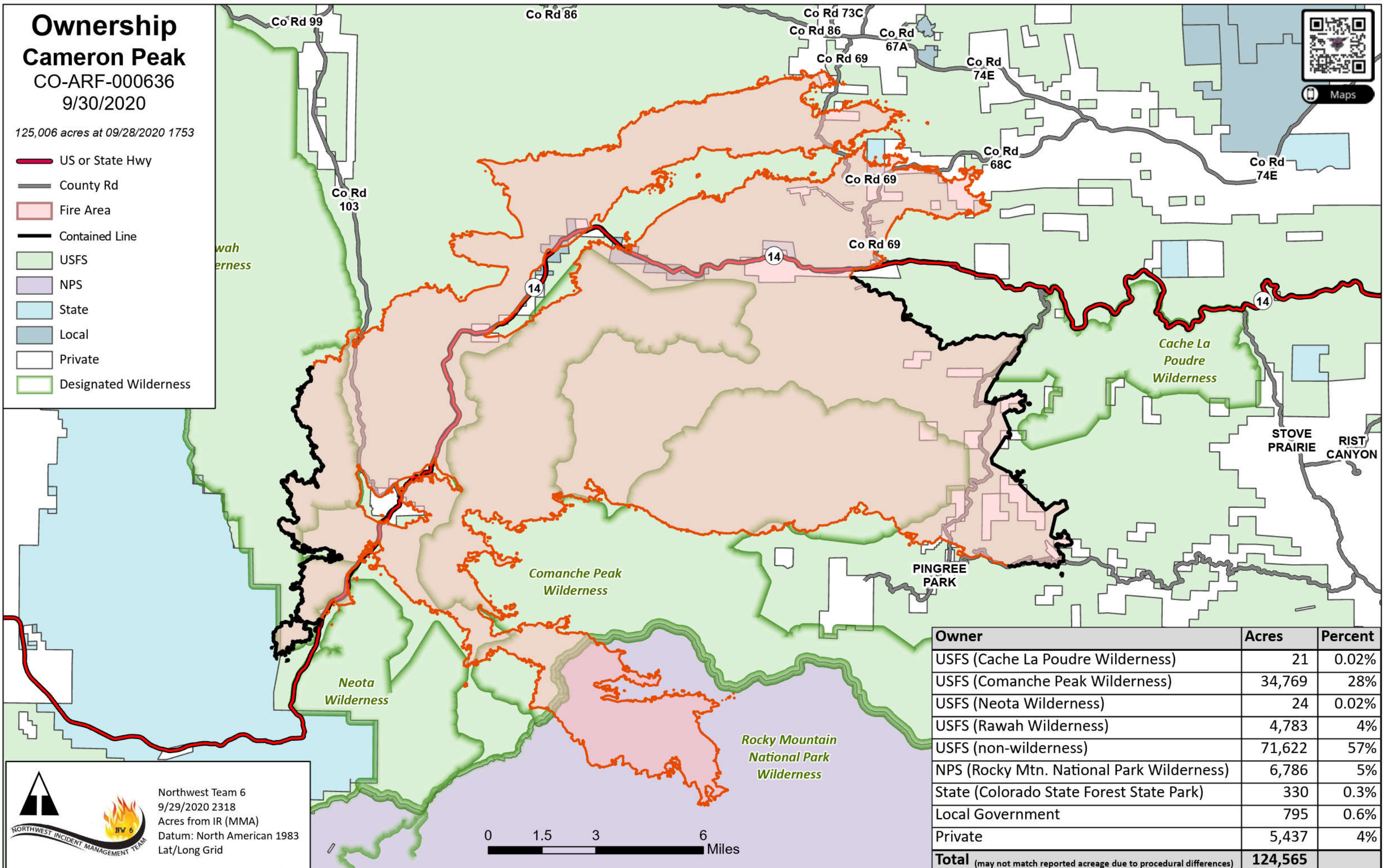
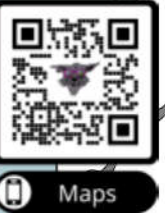


Ownership Cameron Peak CO-ARF-000636 9/30/2020

125,006 acres at 09/28/2020 1753

- US or State Hwy
- County Rd
- Fire Area
- Contained Line
- USFS
- NPS
- State
- Local
- Private
- Designated Wilderness



Owner	Acres	Percent
USFS (Cache La Poudre Wilderness)	21	0.02%
USFS (Comanche Peak Wilderness)	34,769	28%
USFS (Neota Wilderness)	24	0.02%
USFS (Rawah Wilderness)	4,783	4%
USFS (non-wilderness)	71,622	57%
NPS (Rocky Mtn. National Park Wilderness)	6,786	5%
State (Colorado State Forest State Park)	330	0.3%
Local Government	795	0.6%
Private	5,437	4%
Total (may not match reported acreage due to procedural differences)	124,565	

Northwest Team 6
9/29/2020 2318
Acres from IR (MMA)
Datum: North American 1983
Lat/Long Grid

