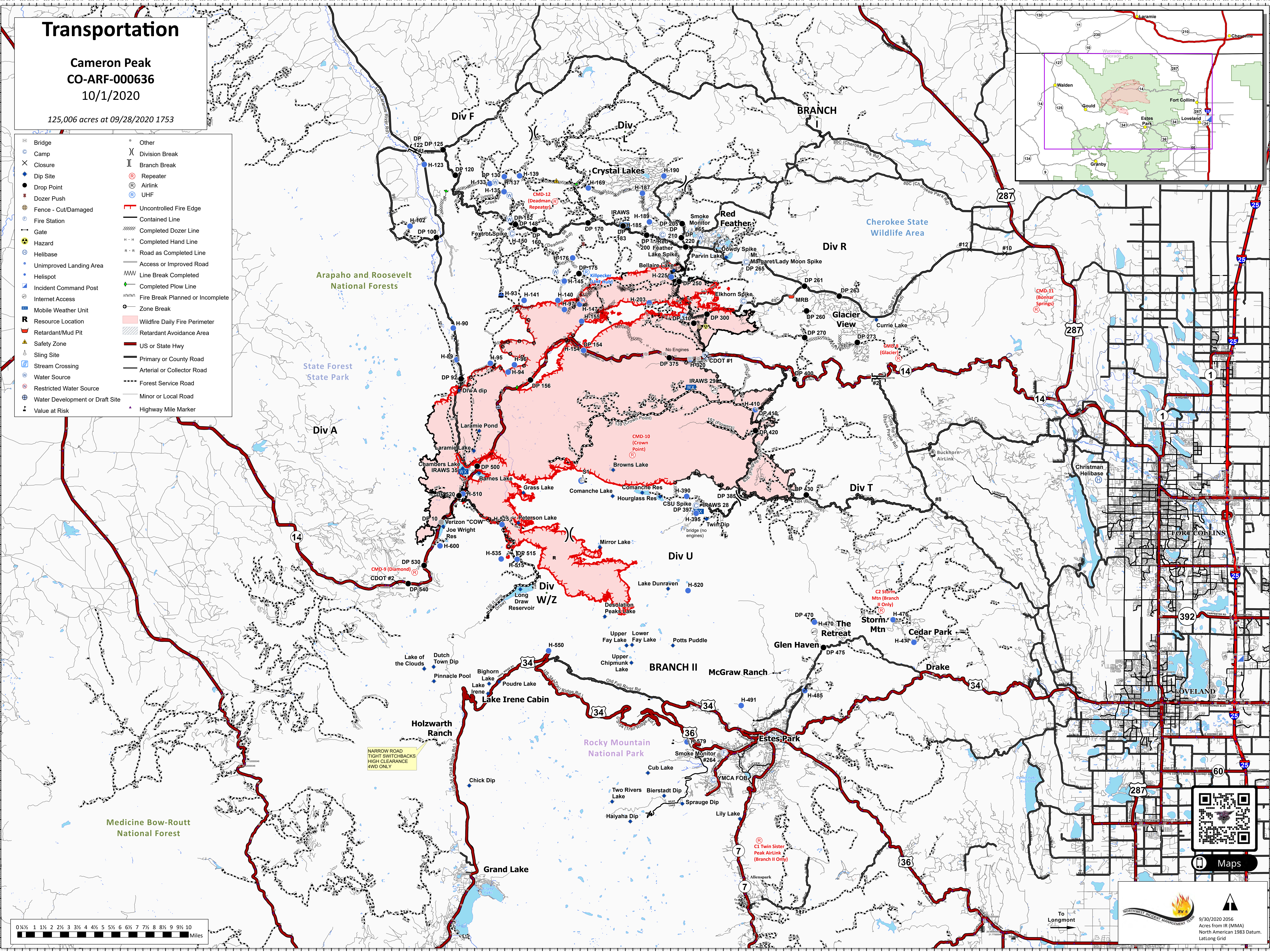
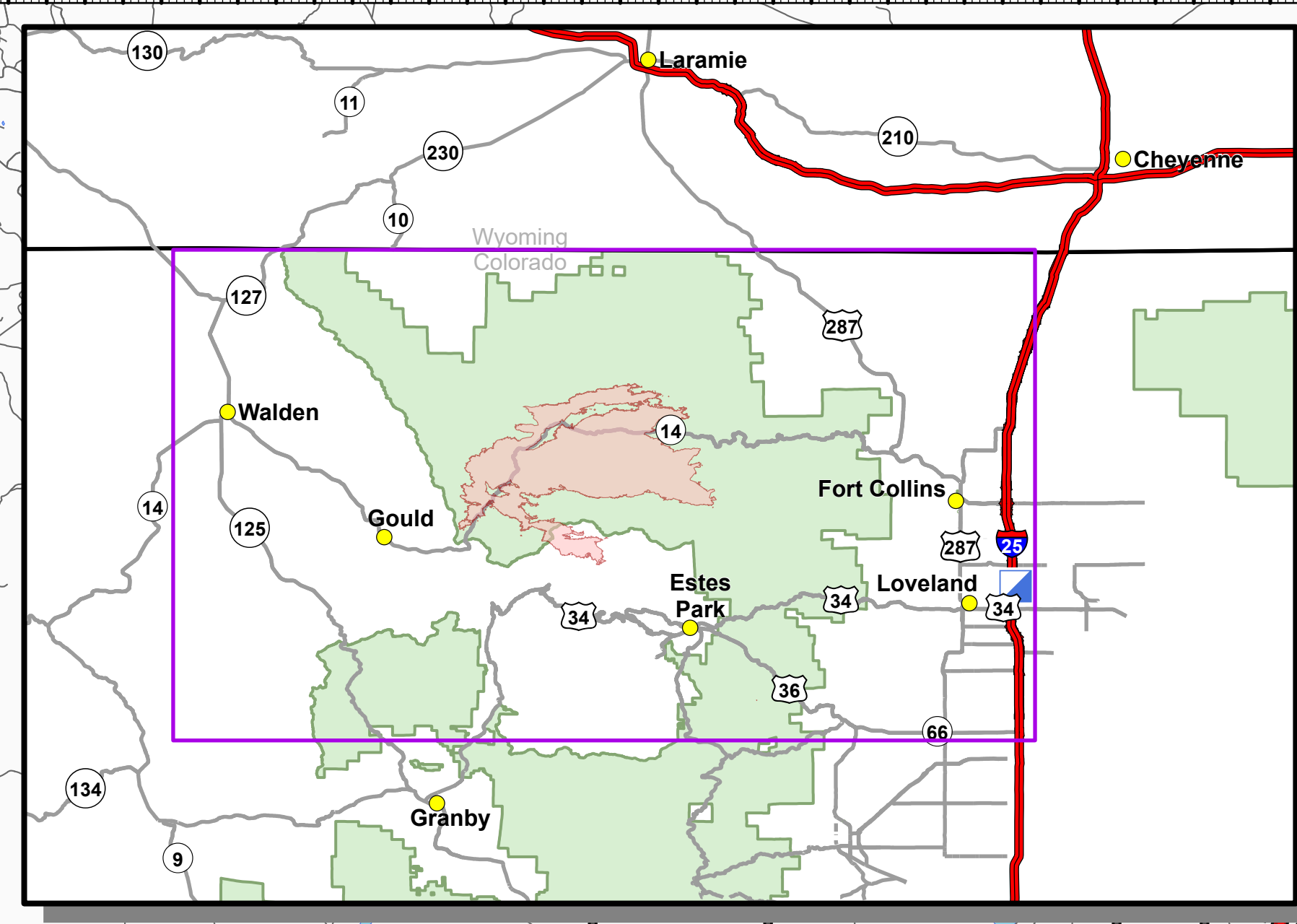


# Transportation

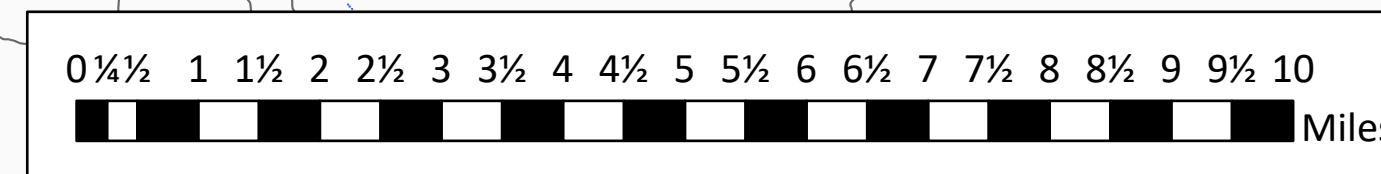
**Cameron Peak**  
**CO-ARF-000636**  
10/1/2020

125,006 acres at 09/28/2020 1753

- |                                 |                                  |
|---------------------------------|----------------------------------|
| Bridge                          | Other                            |
| Camp                            | Division Break                   |
| Closure                         | Branch Break                     |
| Dip Site                        | Repeater                         |
| Drop Point                      | Airlink                          |
| Dozer Push                      | UHF                              |
| Fence - Cut/Damaged             | Uncontrolled Fire Edge           |
| Fire Station                    | Contained Line                   |
| Gate                            | Completed Dozer Line             |
| Hazard                          | Completed Hand Line              |
| Helibase                        | Road as Completed Line           |
| Unimproved Landing Area         | Access or Improved Road          |
| Helispot                        | Line Break Completed             |
| Incident Command Post           | Completed Plow Line              |
| Internet Access                 | Fire Break Planned or Incomplete |
| Mobile Weather Unit             | Zone Break                       |
| Resource Location               | Wildfire Daily Fire Perimeter    |
| Retardant/Mud Pit               | Retardant Avoidance Area         |
| Safety Zone                     | US or State Hwy                  |
| Sling Site                      | Primary or County Road           |
| Stream Crossing                 | Arterial or Collector Road       |
| Water Source                    | Forest Service Road              |
| Restricted Water Source         | Minor or Local Road              |
| Water Development or Draft Site | Highway Mile Marker              |
| Value at Risk                   |                                  |



NARROW ROAD  
TIGHT SWITCHBACKS  
HIGH CLEARANCE  
4WD ONLY



To Longmont



9/30/2020 2056  
Acres from IR (NMA)  
North American 1983 Datum,  
Lat/Long Grid



Maps