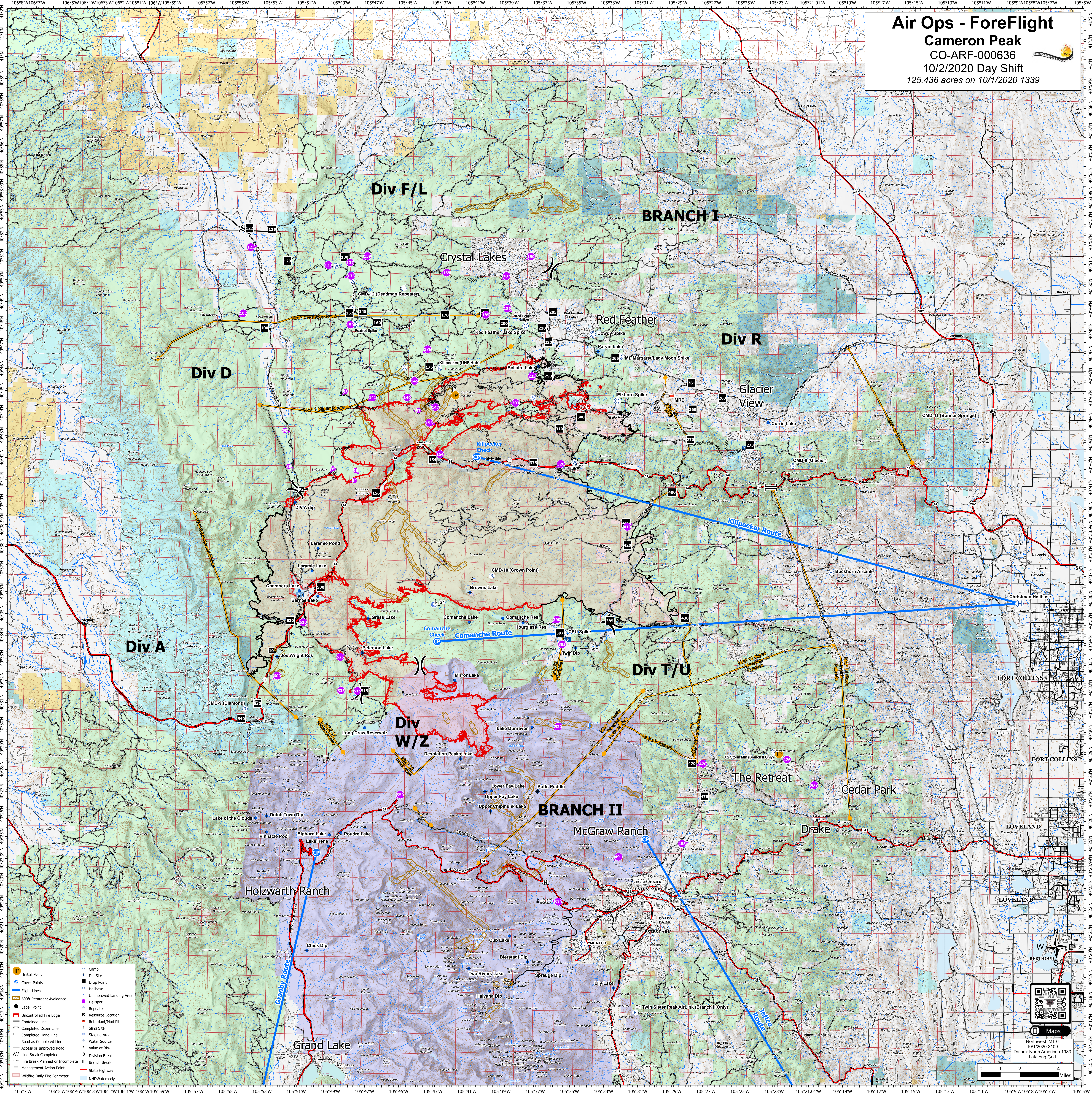


# Air Ops - ForeFlight

## Cameron Peak

CO-ARF-000636  
 10/2/2020 Day Shift  
 125,436 acres on 10/1/2020 1339



**Div F/L**

**BRANCH I**

Crystal Lakes

Red Feather

Div R

Div D

Glacier View

Kilpecker Route

Div A

Div T/U

Div W/Z

BRANCH II

McGraw Ranch

Drake

Holzwarth Ranch

Grand Lake

Estes Park

Fort Collins

Loveland

Map 10 shows...  
 Map 11 shows...  
 Map 12 shows...  
 Map 13 shows...  
 Map 14 shows...  
 Map 15 shows...  
 Map 16 shows...  
 Map 17 shows...  
 Map 18 shows...  
 Map 19 shows...  
 Map 20 shows...  
 Map 21 shows...  
 Map 22 shows...  
 Map 23 shows...  
 Map 24 shows...  
 Map 25 shows...  
 Map 26 shows...  
 Map 27 shows...  
 Map 28 shows...  
 Map 29 shows...  
 Map 30 shows...  
 Map 31 shows...  
 Map 32 shows...  
 Map 33 shows...  
 Map 34 shows...  
 Map 35 shows...  
 Map 36 shows...  
 Map 37 shows...  
 Map 38 shows...  
 Map 39 shows...  
 Map 40 shows...  
 Map 41 shows...  
 Map 42 shows...  
 Map 43 shows...  
 Map 44 shows...  
 Map 45 shows...  
 Map 46 shows...  
 Map 47 shows...  
 Map 48 shows...  
 Map 49 shows...  
 Map 50 shows...  
 Map 51 shows...  
 Map 52 shows...  
 Map 53 shows...  
 Map 54 shows...  
 Map 55 shows...  
 Map 56 shows...  
 Map 57 shows...  
 Map 58 shows...  
 Map 59 shows...  
 Map 60 shows...  
 Map 61 shows...  
 Map 62 shows...  
 Map 63 shows...  
 Map 64 shows...  
 Map 65 shows...  
 Map 66 shows...  
 Map 67 shows...  
 Map 68 shows...  
 Map 69 shows...  
 Map 70 shows...  
 Map 71 shows...  
 Map 72 shows...  
 Map 73 shows...  
 Map 74 shows...  
 Map 75 shows...  
 Map 76 shows...  
 Map 77 shows...  
 Map 78 shows...  
 Map 79 shows...  
 Map 80 shows...  
 Map 81 shows...  
 Map 82 shows...  
 Map 83 shows...  
 Map 84 shows...  
 Map 85 shows...  
 Map 86 shows...  
 Map 87 shows...  
 Map 88 shows...  
 Map 89 shows...  
 Map 90 shows...  
 Map 91 shows...  
 Map 92 shows...  
 Map 93 shows...  
 Map 94 shows...  
 Map 95 shows...  
 Map 96 shows...  
 Map 97 shows...  
 Map 98 shows...  
 Map 99 shows...  
 Map 100 shows...

- IP Initial Point
- Check Point
- Drop Point
- Helibase
- Unimproved Landing Area
- 600ft Retardant Avoidance
- Label Point
- Repeater
- Resource Location
- Retardant/Mud Pit
- Completed Dozer Line
- Completed Hand Line
- Water Source
- Access or Improved Road
- Value at Risk
- Line Break Completed
- Fire Break Planned or Incomplete
- Management Action Point
- Wildfire Daily Fire Perimeter
- NH2Waterbody

Northwest MT 6  
 10/1/2020 2105  
 Datum: North American 1983  
 Lat/Long Grid

0 1 2 4 Miles

Maps