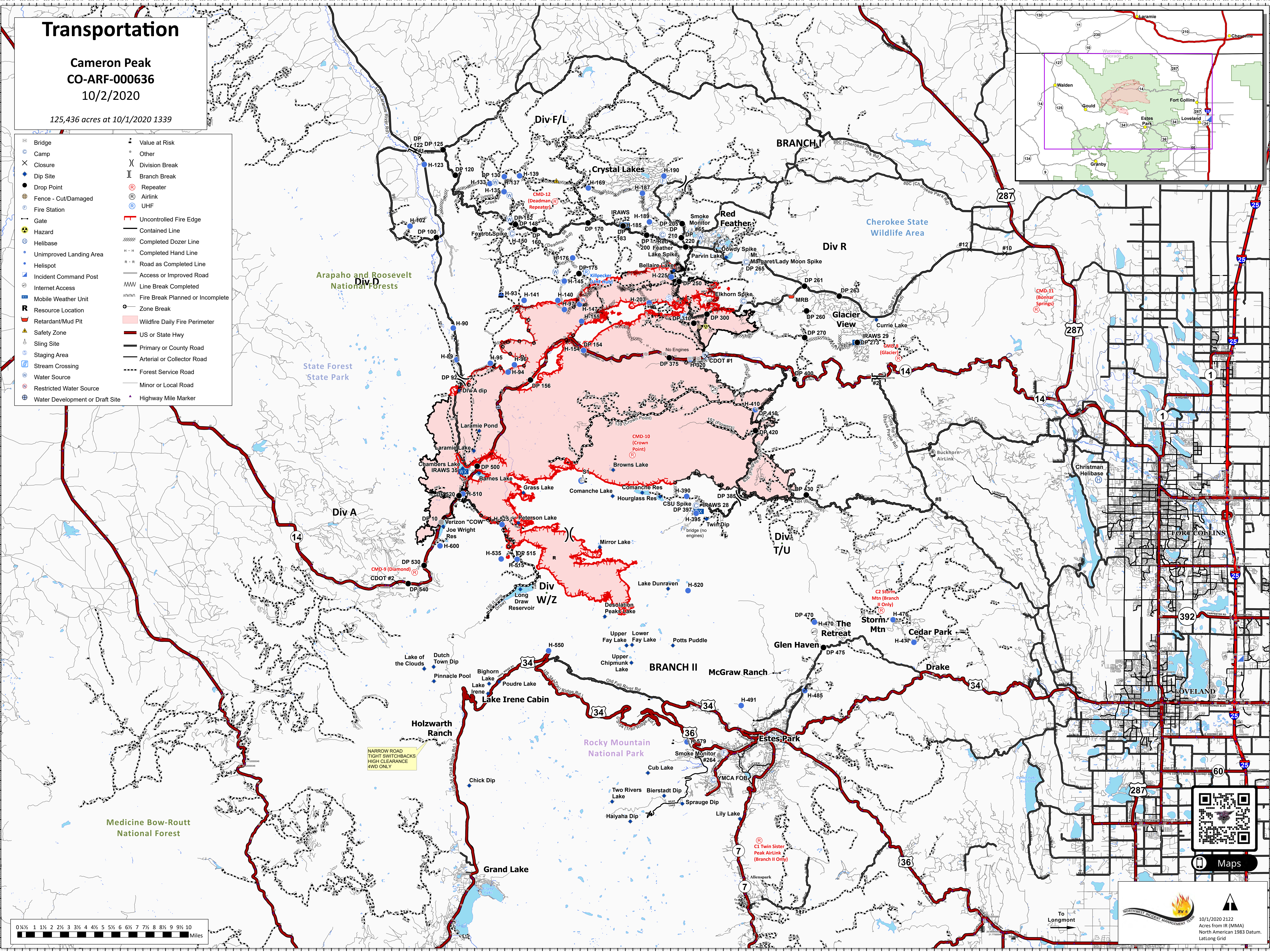
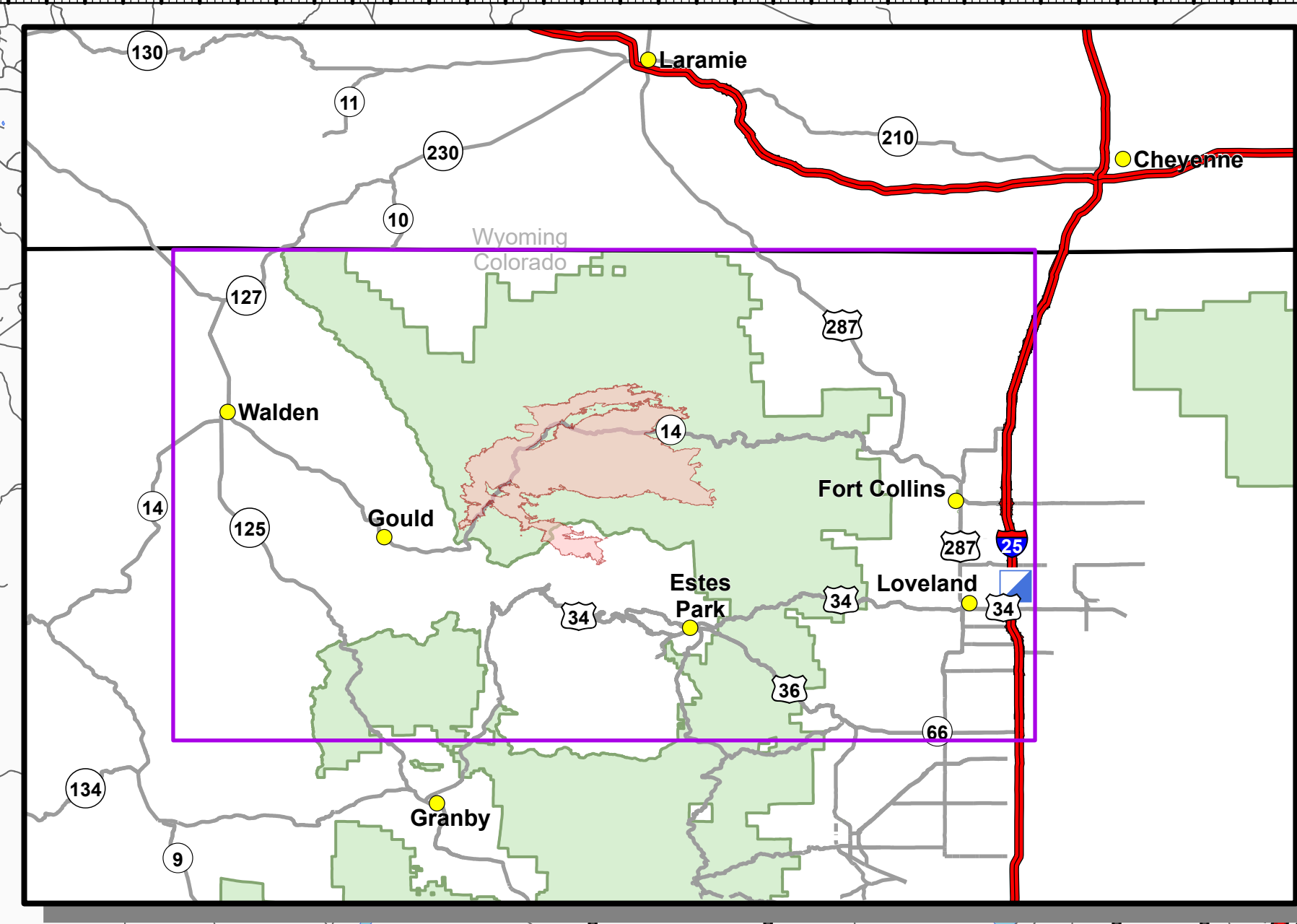


Transportation

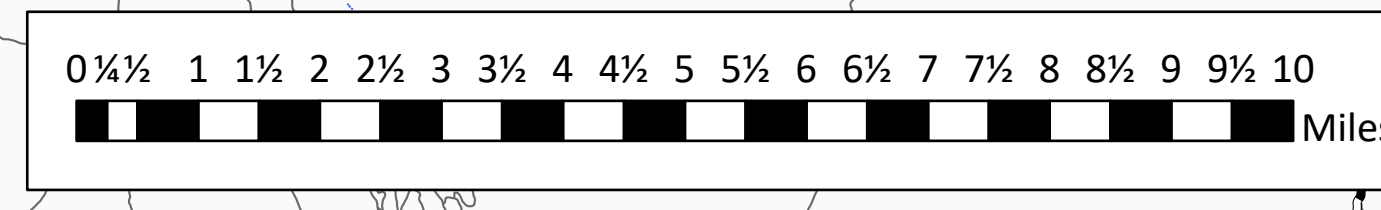
Cameron Peak
CO-ARF-000636
10/2/2020

125,436 acres at 10/1/2020 1339

- | | |
|---------------------------------|----------------------------------|
| Bridge | Value at Risk |
| Camp | Other |
| Closure | Division Break |
| Dip Site | Branch Break |
| Drop Point | Repeater |
| Fence - Cut/Damaged | Airlink |
| Fire Station | UHF |
| Gate | Uncontrolled Fire Edge |
| Hazard | Contained Line |
| Helibase | Completed Dozer Line |
| Unimproved Landing Area | Completed Hand Line |
| Helispot | R-R Road as Completed Line |
| Incident Command Post | Access or Improved Road |
| Internet Access | Line Break Completed |
| Mobile Weather Unit | Fire Break Planned or Incomplete |
| Resource Location | Zone Break |
| Retardant/Mud Pit | Wildfire Daily Fire Perimeter |
| Safety Zone | US or State Hwy |
| Sling Site | Primary or County Road |
| Staging Area | Arterial or Collector Road |
| Stream Crossing | Forest Service Road |
| Water Source | Minor or Local Road |
| Restricted Water Source | Highway Mile Marker |
| Water Development or Draft Site | |



NARROW ROAD
TIGHT SWITCHBACKS
HIGH CLEARANCE
4WD ONLY



10/1/2020 2122
Acres from IR (NMA)
North American 1983 Datum,
LatLong Grid

