

# Ownership

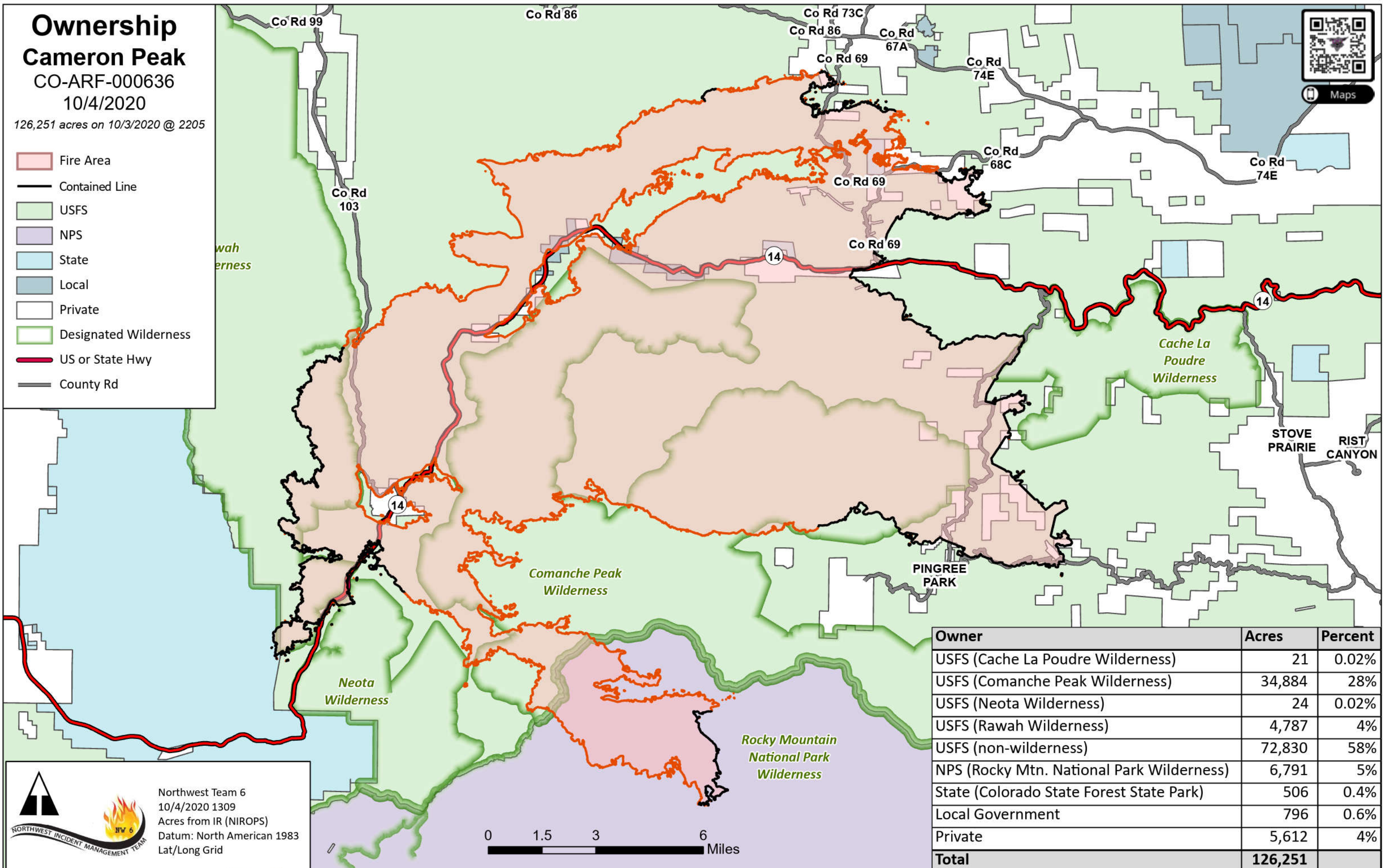
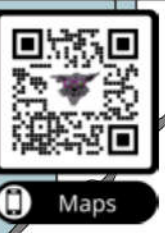
## Cameron Peak

CO-ARF-000636

10/4/2020

126,251 acres on 10/3/2020 @ 2205

- Fire Area
- Contained Line
- USFS
- NPS
- State
- Local
- Private
- Designated Wilderness
- US or State Hwy
- County Rd



Owner	Acres	Percent
USFS (Cache La Poudre Wilderness)	21	0.02%
USFS (Comanche Peak Wilderness)	34,884	28%
USFS (Neota Wilderness)	24	0.02%
USFS (Rawah Wilderness)	4,787	4%
USFS (non-wilderness)	72,830	58%
NPS (Rocky Mtn. National Park Wilderness)	6,791	5%
State (Colorado State Forest State Park)	506	0.4%
Local Government	796	0.6%
Private	5,612	4%
<b>Total</b>	<b>126,251</b>	



Northwest Team 6  
 10/4/2020 1309  
 Acres from IR (NIROPS)  
 Datum: North American 1983  
 Lat/Long Grid