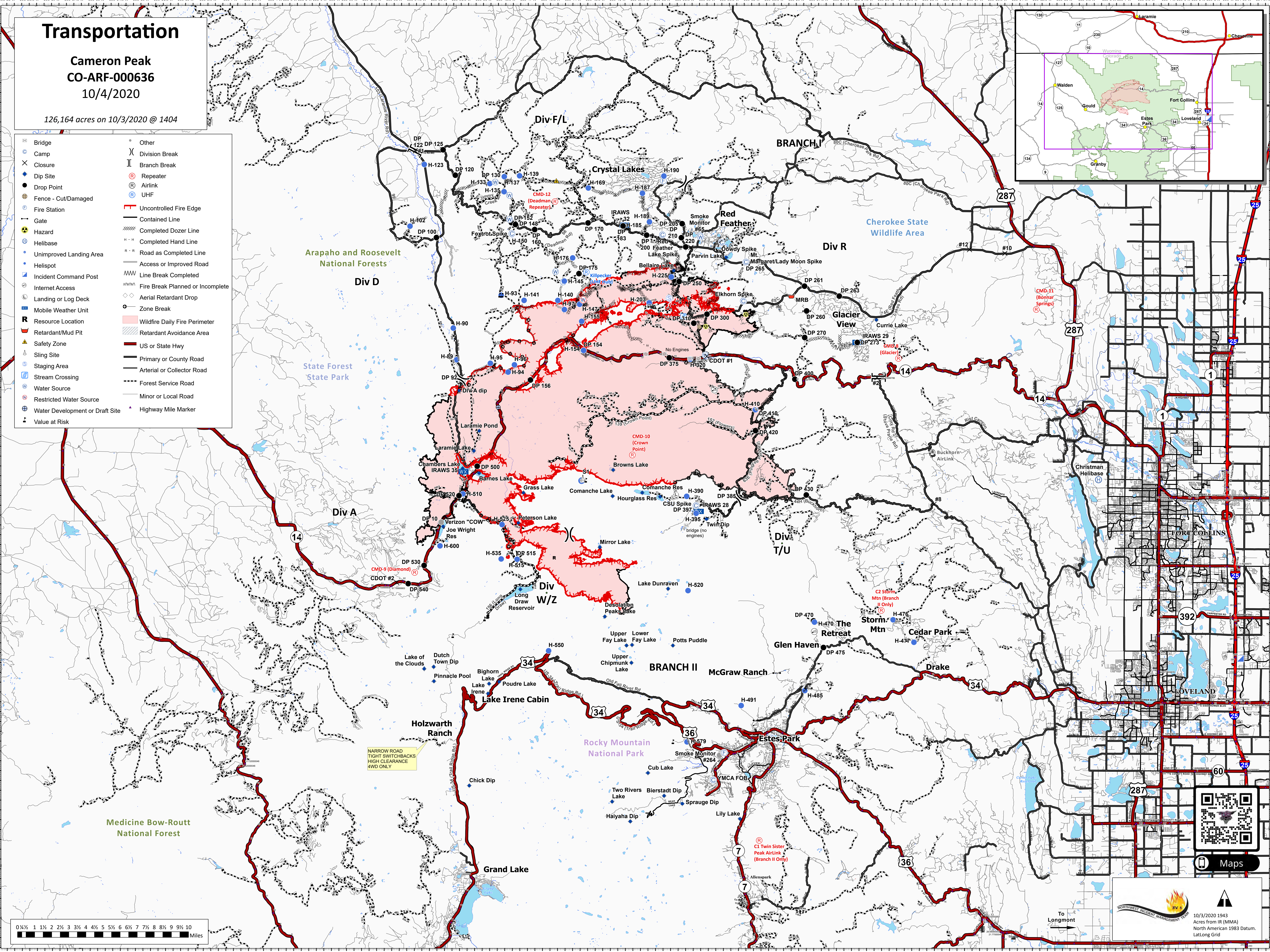
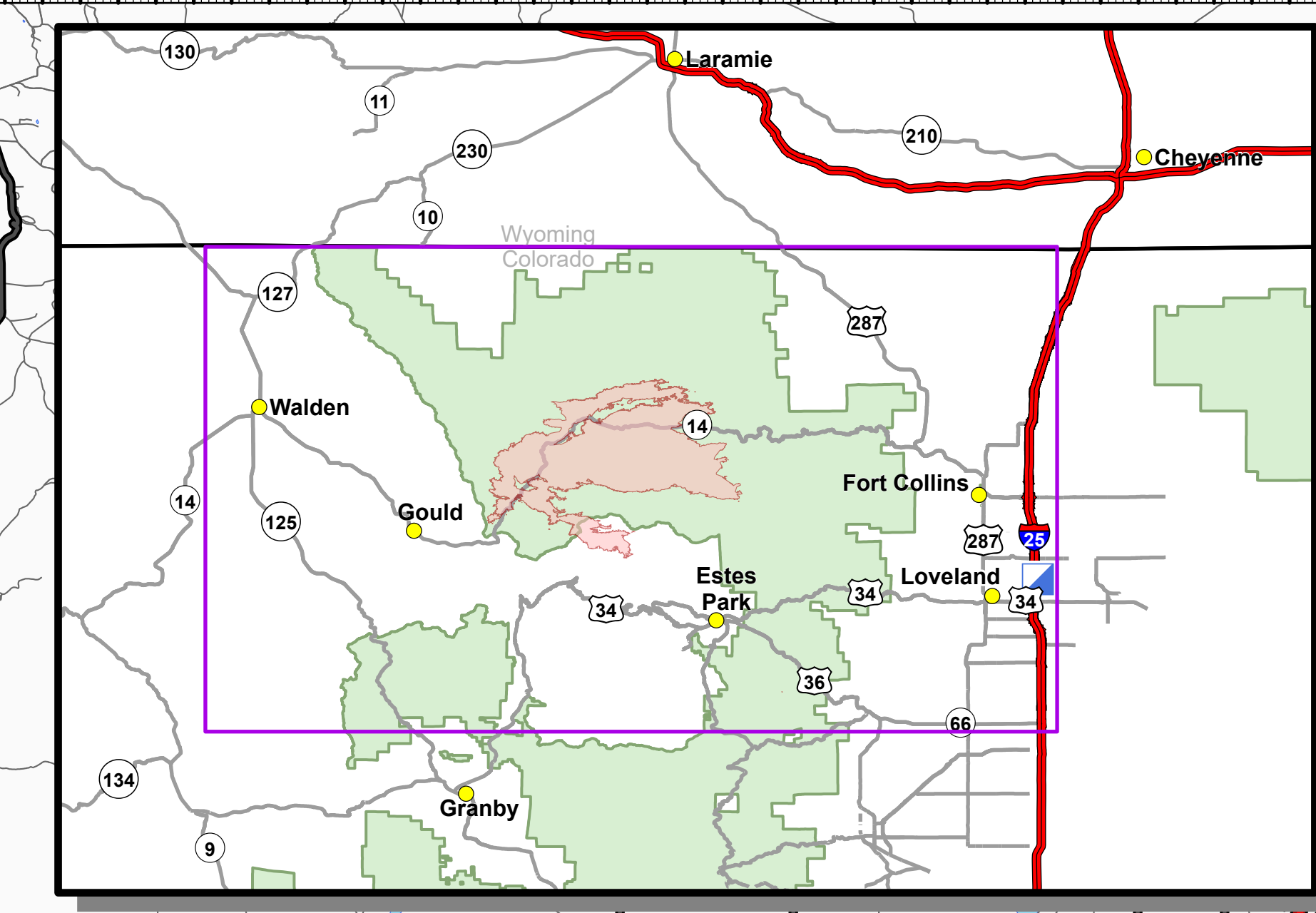


Transportation

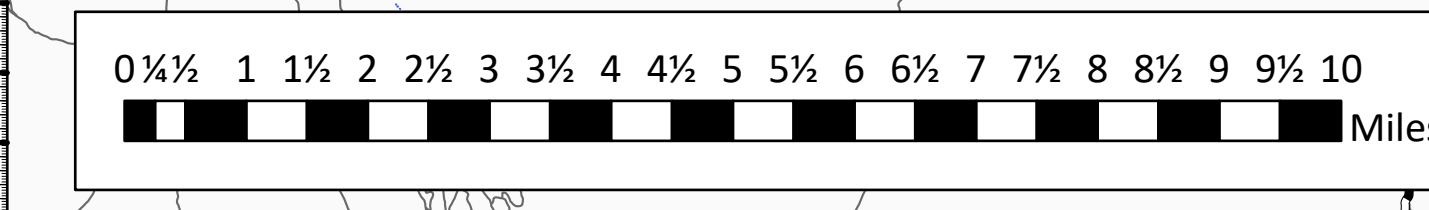
Cameron Peak
CO-ARF-000636
10/4/2020

126,164 acres on 10/3/2020 @ 1404

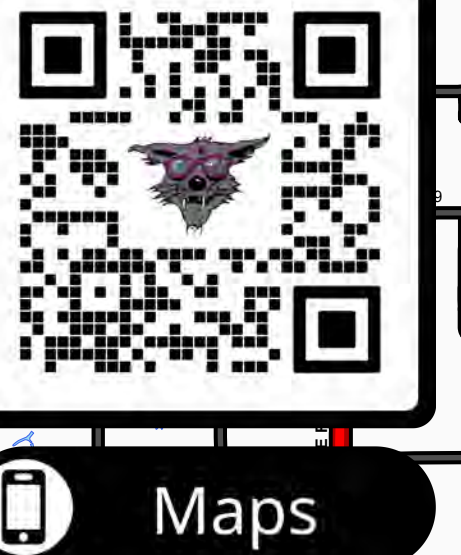
- | | |
|---------------------------------|----------------------------------|
| Bridge | Other |
| Camp | Division Break |
| Closure | Branch Break |
| Dip Site | Repeater |
| Drop Point | Airlink |
| Fence - Cut/Damaged | UHF |
| Fire Station | Uncontrolled Fire Edge |
| Gate | Contained Line |
| Hazard | Completed Dozer Line |
| Helibase | Completed Hand Line |
| Unimproved Landing Area | Road as Completed Line |
| Helispot | Access or Improved Road |
| Incident Command Post | Line Break Completed |
| Internet Access | Fire Break Planned or Incomplete |
| Landing or Log Deck | Aerial Retardant Drop |
| Mobile Weather Unit | Zone Break |
| Resource Location | Wildfire Daily Fire Perimeter |
| Retardant/Mud Pit | Retardant Avoidance Area |
| Safety Zone | US or State Hwy |
| Sling Site | Primary or County Road |
| Staging Area | Arterial or Collector Road |
| Stream Crossing | Forest Service Road |
| Water Source | Minor or Local Road |
| Restricted Water Source | Highway Mile Marker |
| Water Development or Draft Site | |
| Value at Risk | |



NARROW ROAD
TIGHT SWITCHBACKS
HIGH CLEARANCE
4WD ONLY



10/3/2020 1943
Acres from IR (MMA)
North American 1983 Datum.
Lat/Long Grid



Maps