

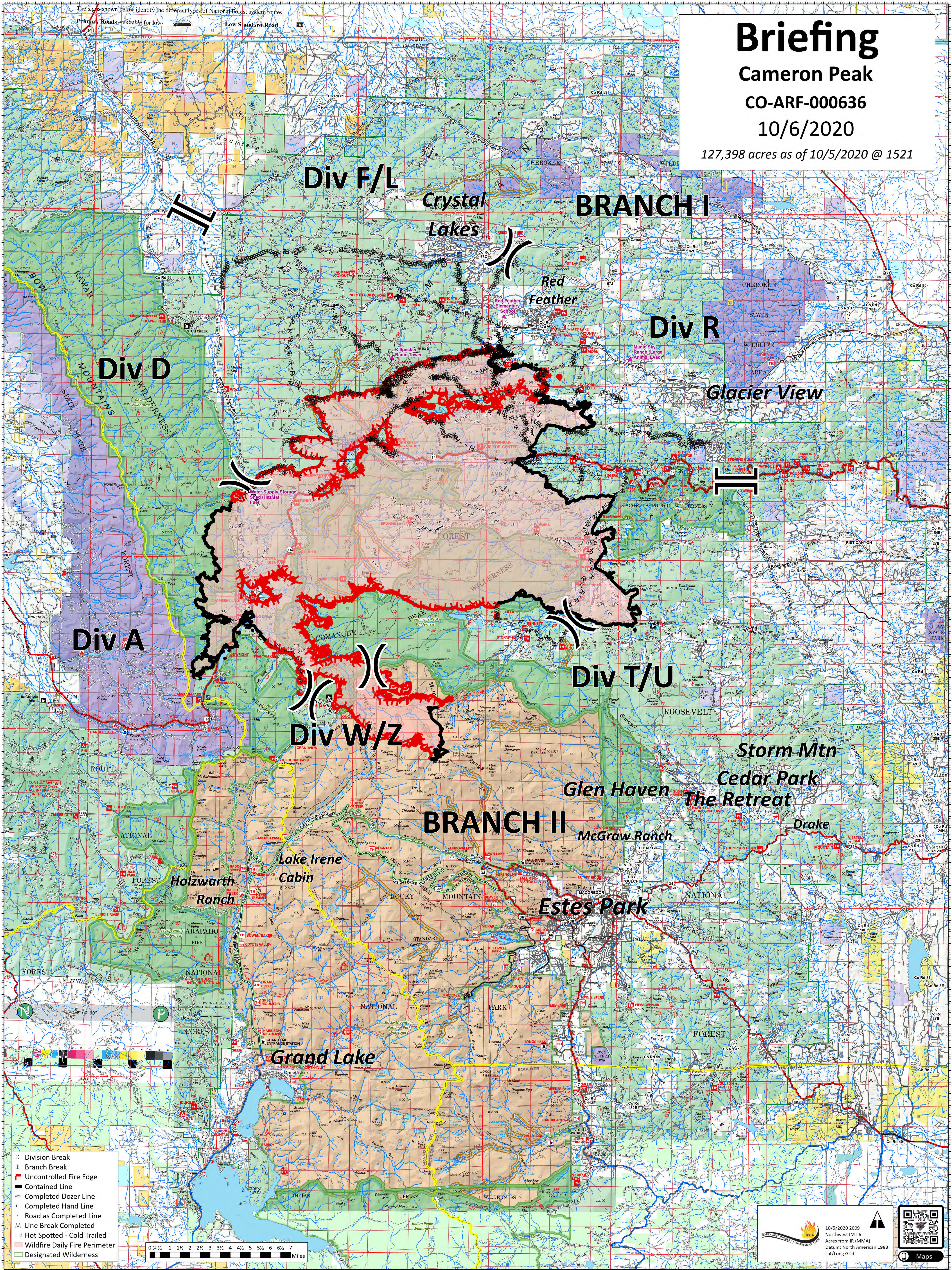
Briefing

Cameron Peak

CO-ARF-000636

10/6/2020

127,398 acres as of 10/5/2020 @ 1521

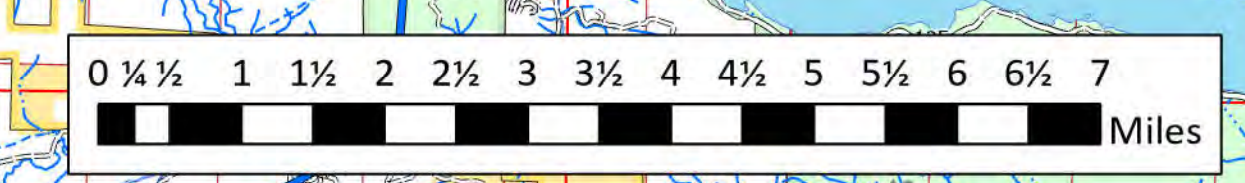


The signs shown below identify the different types of National Forest system routes

Primary Roads - suitable for low

Low Standard Road

- X Division Break
- Branch Break
- Uncontrolled Fire Edge
- Contained Line
- Completed Dozer Line
- Completed Hand Line
- Road as Completed Line
- Line Break Completed
- Hot Spotted - Cold Trailed
- Wildfire Daily Fire Perimeter
- Designated Wilderness



10/5/2020 2009
Northwest IMT 6
Acres from IR (MMA)
Datum: North American 1983
Lat/Long Grid