

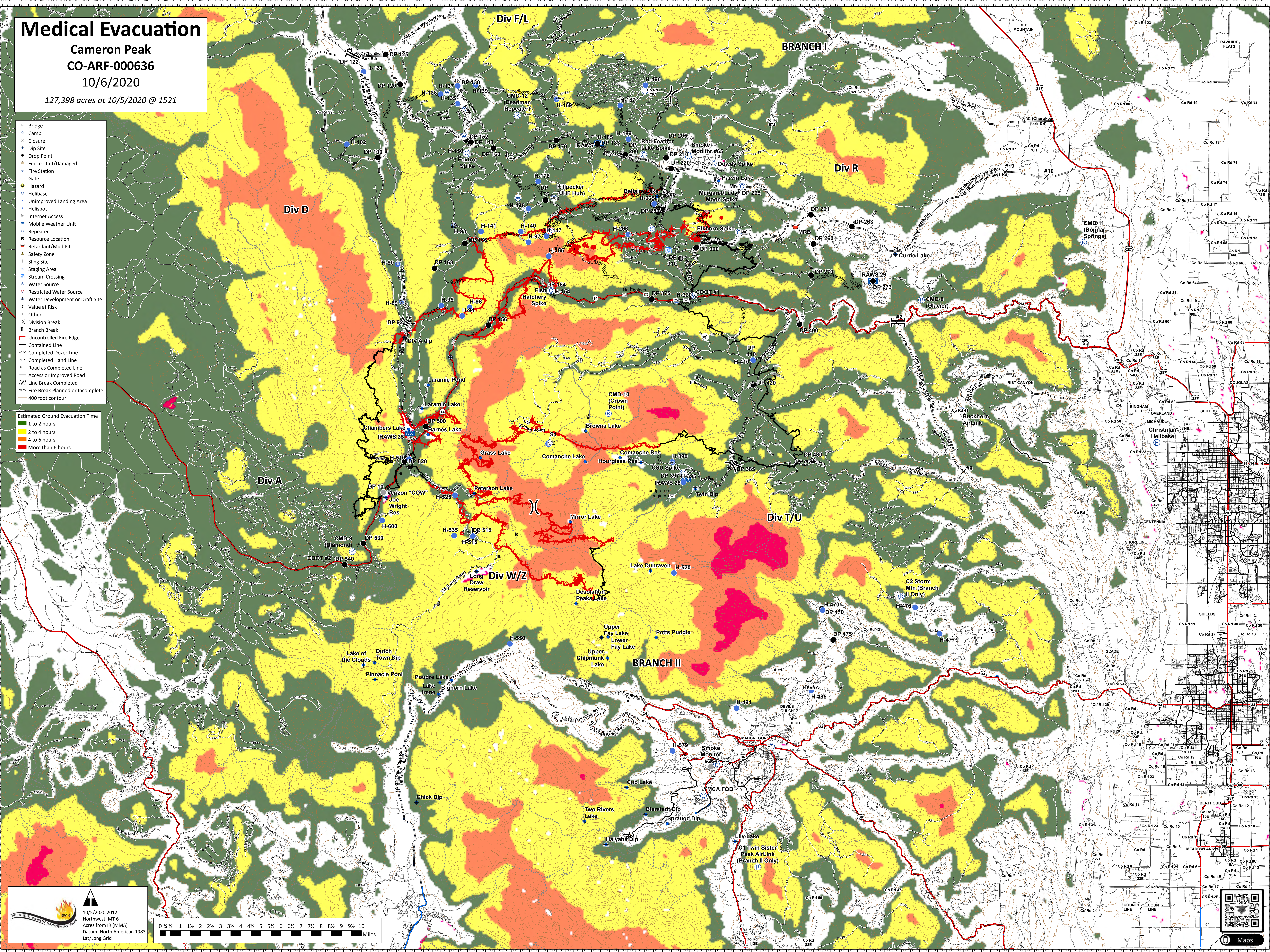
Medical Evacuation

Cameron Peak
CO-ARF-000636
10/6/2020

127,398 acres at 10/5/2020 @ 1521

- Bridge
- Camp
- Closure
- Dip Site
- Drop Point
- Fence - Cut/Damaged
- Fire Station
- Gate
- Hazard
- Helibase
- Unimproved Landing Area
- Helispot
- Internet Access
- Mobile Weather Unit
- Repeater
- Resource Location
- Retardant/Mud Pit
- Safety Zone
- Sling Site
- Staging Area
- Stream Crossing
- Water Source
- Restricted Water Source
- Water Development or Draft Site
- Value at Risk
- Other
- Division Break
- Branch Break
- Uncontrolled Fire Edge
- Contained Line
- Completed Dozer Line
- Completed Hand Line
- Road as Completed Line
- Access or Improved Road
- Line Break Completed
- Fire Break Planned or Incomplete
- 400 foot contour

- Estimated Ground Evacuation Time
- 1 to 2 hours
 - 2 to 4 hours
 - 4 to 6 hours
 - More than 6 hours



10/5/2020 2012
Northwest (NAT 5)
Acre from IR (MMA)
Datum: North American 1983
Lat/Long Grid

