

Medical Ground Transportation

**Cameron Peak
CO-ARF-000636**

10/6/2020

127,398 acres at 10/5/2020 @ 1521

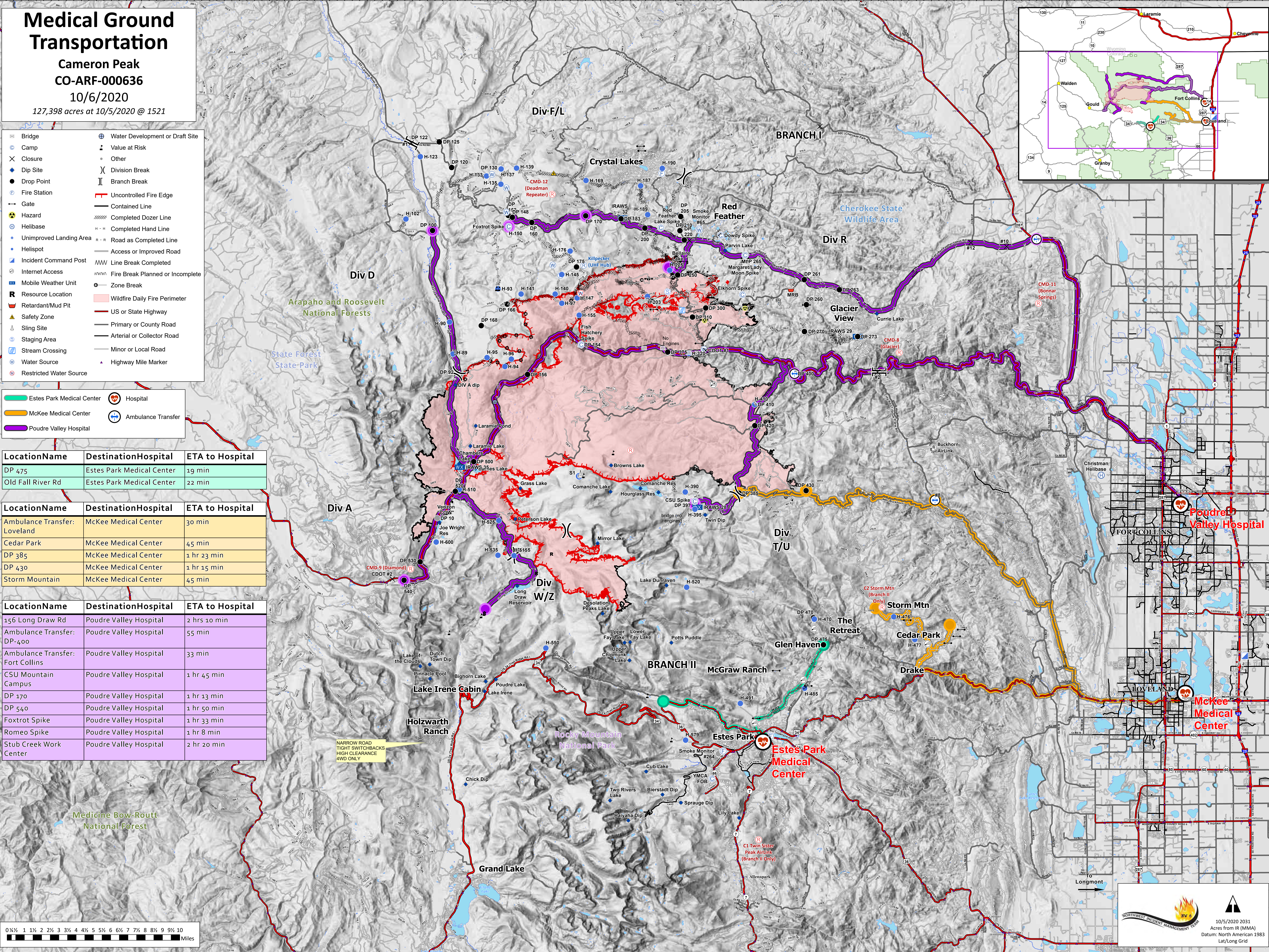
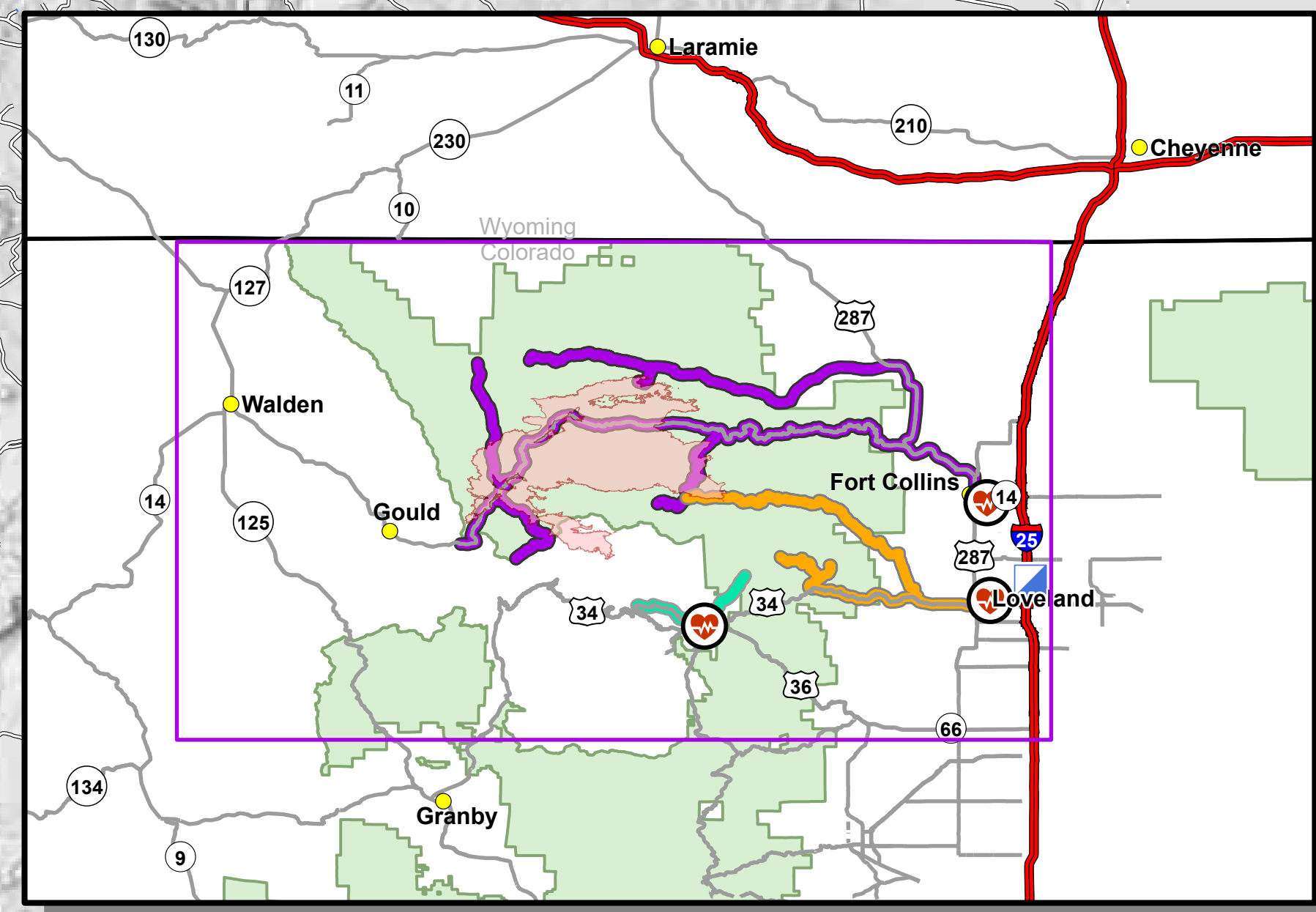
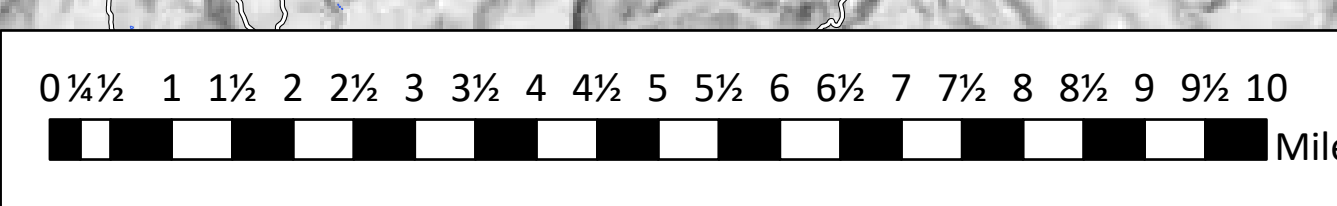
- Bridge
- Camp
- Closure
- Dip Site
- Drop Point
- Fire Station
- Gate
- Hazard
- Helibase
- Unimproved Landing Area
- Helispot
- Incident Command Post
- Internet Access
- Mobile Weather Unit
- Resource Location
- Retardant/Mud Pit
- Safety Zone
- Sling Site
- Staging Area
- Stream Crossing
- Water Source
- Restricted Water Source
- Water Development or Draft Site
- Value at Risk
- Other
- Division Break
- Branch Break
- Uncontrolled Fire Edge
- Contained Line
- Completed Dozer Line
- Road as Completed Line
- Access or Improved Road
- Line Break Completed
- Fire Break Planned or Incomplete
- Zone Break
- Wildfire Daily Fire Perimeter
- US or State Highway
- Primary or County Road
- Arterial or Collector Road
- Minor or Local Road
- Highway Mile Marker

- Estes Park Medical Center
- McKee Medical Center
- Poudre Valley Hospital
- Hospital
- Ambulance Transfer

LocationName	DestinationHospital	ETA to Hospital
DP 475	Estes Park Medical Center	19 min
Old Fall River Rd	Estes Park Medical Center	22 min

LocationName	DestinationHospital	ETA to Hospital
Ambulance Transfer: Loveland	McKee Medical Center	30 min
Cedar Park	McKee Medical Center	45 min
DP 385	McKee Medical Center	1 hr 23 min
DP 430	McKee Medical Center	1 hr 15 min
Storm Mountain	McKee Medical Center	45 min

LocationName	DestinationHospital	ETA to Hospital
156 Long Draw Rd	Poudre Valley Hospital	2 hrs 10 min
Ambulance Transfer: DP-400	Poudre Valley Hospital	55 min
Ambulance Transfer: Fort Collins	Poudre Valley Hospital	33 min
CSU Mountain Campus	Poudre Valley Hospital	1 hr 45 min
DP 170	Poudre Valley Hospital	1 hr 13 min
DP 540	Poudre Valley Hospital	1 hr 50 min
Foxtrot Spike	Poudre Valley Hospital	1 hr 33 min
Romeo Spike	Poudre Valley Hospital	1 hr 8 min
Stub Creek Work Center	Poudre Valley Hospital	2 hr 20 min



10/5/2020 2031
Acres from IR (MMA)
Datum: North American 1983
Lat/Long Grid