

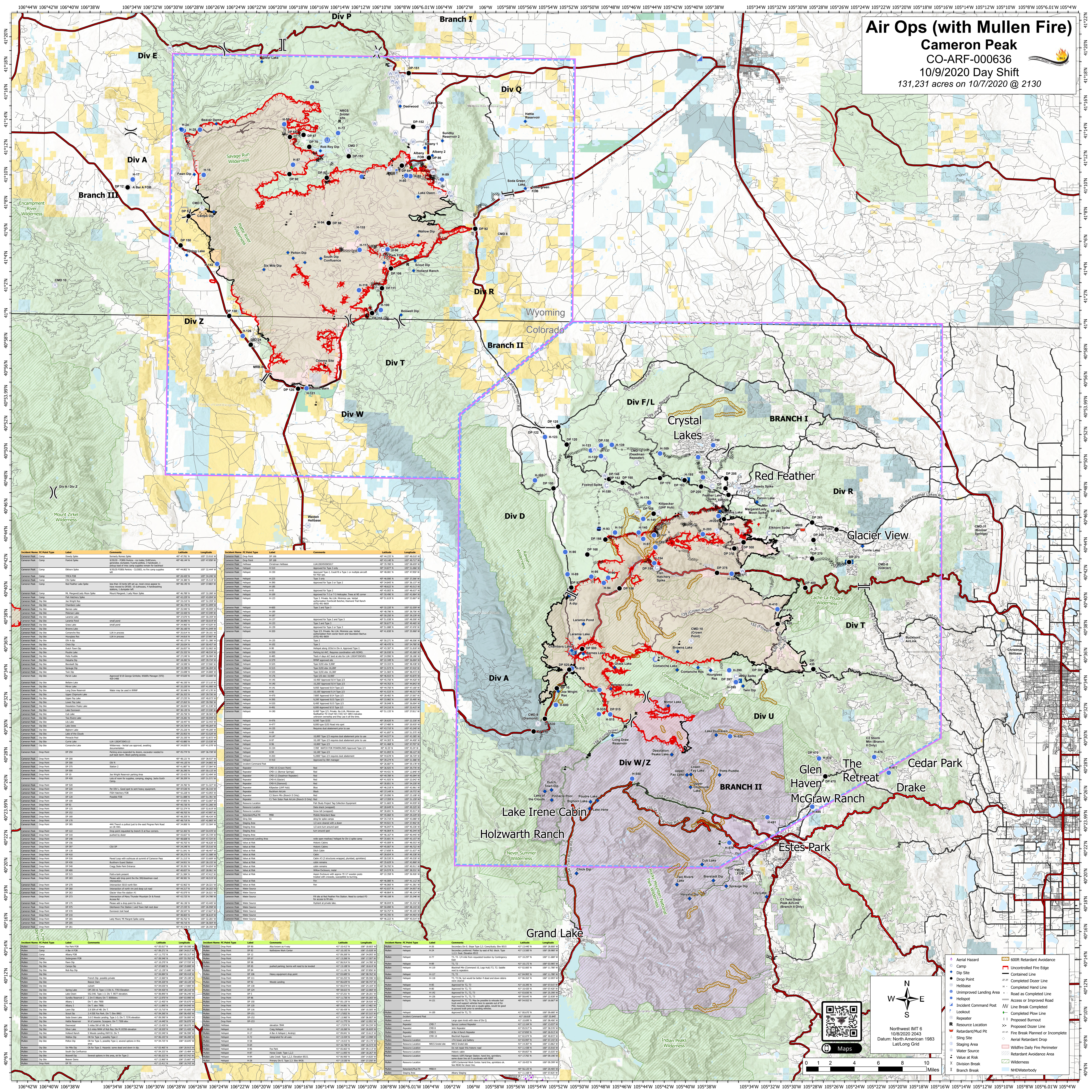
# Air Ops (with Mullen Fire)

## Cameron Peak

### CO-ARF-000636

#### 10/9/2020 Day Shift

131,231 acres on 10/7/2020 @ 2130



Incident Name	PC Point Type	Label	Comments	Latitude	Longitude
Cameron Peak	Camp	Dowdy Spike	Barney's Barren Spike	40° 47.761' N	105° 31.141' W
Cameron Peak	Camp	Hollow Dip	Approved for Type 2	40° 48.144' N	105° 47.900' W
Cameron Peak	Camp	Wallow Dip	Approved for Type 2	40° 48.802' N	105° 31.444' W
Cameron Peak	Camp	HMCA FDR	Approved for Type 2	40° 48.827' N	105° 38.268' W
Cameron Peak	Camp	CHL FDR	Approved for Type 2	40° 48.887' N	105° 38.268' W
Cameron Peak	Camp	Red Feather Lake Spike	Not for use until set up, check camp, upper to station, 1500' to 1800', 1500' to 1800', 1500' to 1800'	40° 48.147' N	105° 37.842' W
Cameron Peak	Camp	Red Feather Lake Spike	Approved for Type 2	40° 48.147' N	105° 37.842' W
Cameron Peak	Camp	Red Feather Lake Spike	Approved for Type 2	40° 48.147' N	105° 37.842' W
Cameron Peak	Camp	Red Feather Lake Spike	Approved for Type 2	40° 48.147' N	105° 37.842' W

Incident Name	PC Point Type	Label	Comments	Latitude	Longitude
Cameron Peak	Camp	Wallow Dip	Approved for Type 2	40° 48.802' N	105° 31.444' W
Cameron Peak	Camp	HMCA FDR	Approved for Type 2	40° 48.827' N	105° 38.268' W
Cameron Peak	Camp	CHL FDR	Approved for Type 2	40° 48.887' N	105° 38.268' W
Cameron Peak	Camp	Red Feather Lake Spike	Not for use until set up, check camp, upper to station, 1500' to 1800', 1500' to 1800', 1500' to 1800'	40° 48.147' N	105° 37.842' W
Cameron Peak	Camp	Red Feather Lake Spike	Approved for Type 2	40° 48.147' N	105° 37.842' W
Cameron Peak	Camp	Red Feather Lake Spike	Approved for Type 2	40° 48.147' N	105° 37.842' W

Incident Name	PC Point Type	Label	Comments	Latitude	Longitude
Cameron Peak	Camp	Wallow Dip	Approved for Type 2	40° 48.802' N	105° 31.444' W
Cameron Peak	Camp	HMCA FDR	Approved for Type 2	40° 48.827' N	105° 38.268' W
Cameron Peak	Camp	CHL FDR	Approved for Type 2	40° 48.887' N	105° 38.268' W
Cameron Peak	Camp	Red Feather Lake Spike	Not for use until set up, check camp, upper to station, 1500' to 1800', 1500' to 1800', 1500' to 1800'	40° 48.147' N	105° 37.842' W
Cameron Peak	Camp	Red Feather Lake Spike	Approved for Type 2	40° 48.147' N	105° 37.842' W
Cameron Peak	Camp	Red Feather Lake Spike	Approved for Type 2	40° 48.147' N	105° 37.842' W

Incident Name	PC Point Type	Label	Comments	Latitude	Longitude
Cameron Peak	Camp	Wallow Dip	Approved for Type 2	40° 48.802' N	105° 31.444' W
Cameron Peak	Camp	HMCA FDR	Approved for Type 2	40° 48.827' N	105° 38.268' W
Cameron Peak	Camp	CHL FDR	Approved for Type 2	40° 48.887' N	105° 38.268' W
Cameron Peak	Camp	Red Feather Lake Spike	Not for use until set up, check camp, upper to station, 1500' to 1800', 1500' to 1800', 1500' to 1800'	40° 48.147' N	105° 37.842' W
Cameron Peak	Camp	Red Feather Lake Spike	Approved for Type 2	40° 48.147' N	105° 37.842' W
Cameron Peak	Camp	Red Feather Lake Spike	Approved for Type 2	40° 48.147' N	105° 37.842' W

Incident Name	PC Point Type	Label	Comments	Latitude	Longitude
Cameron Peak	Camp	Wallow Dip	Approved for Type 2	40° 48.802' N	105° 31.444' W
Cameron Peak	Camp	HMCA FDR	Approved for Type 2	40° 48.827' N	105° 38.268' W
Cameron Peak	Camp	CHL FDR	Approved for Type 2	40° 48.887' N	105° 38.268' W
Cameron Peak	Camp	Red Feather Lake Spike	Not for use until set up, check camp, upper to station, 1500' to 1800', 1500' to 1800', 1500' to 1800'	40° 48.147' N	105° 37.842' W
Cameron Peak	Camp	Red Feather Lake Spike	Approved for Type 2	40° 48.147' N	105° 37.842' W
Cameron Peak	Camp	Red Feather Lake Spike	Approved for Type 2	40° 48.147' N	105° 37.842' W

Incident Name	PC Point Type	Label	Comments	Latitude	Longitude
Cameron Peak	Camp	Wallow Dip	Approved for Type 2	40° 48.802' N	105° 31.444' W
Cameron Peak	Camp	HMCA FDR	Approved for Type 2	40° 48.827' N	105° 38.268' W
Cameron Peak	Camp	CHL FDR	Approved for Type 2	40° 48.887' N	105° 38.268' W
Cameron Peak	Camp	Red Feather Lake Spike	Not for use until set up, check camp, upper to station, 1500' to 1800', 1500' to 1800', 1500' to 1800'	40° 48.147' N	105° 37.842' W
Cameron Peak	Camp	Red Feather Lake Spike	Approved for Type 2	40° 48.147' N	105° 37.842' W
Cameron Peak	Camp	Red Feather Lake Spike	Approved for Type 2	40° 48.147' N	105° 37.842' W

Northwest IIT 6  
10/8/2020 2043  
Datum: North American 1983  
Lat/Long Grid

0 1 2 4 6 8 10  
Miles

**Legend**

- Aerial Hazard
- Camp
- Dip Site
- Helibase
- Unimproved Landing Area
- Helispot
- Incident Command Post
- Lookout
- Repeater
- Resource Location
- Retardant/Mud Pit
- Staging Area
- Water Source
- Value at Risk
- Division Break
- Branch Break
- Uncontrolled Fire Edge
- Contained Line
- Completed Hand Line
- Road as Completed Line
- Access or Improved Road
- Line Break Completed
- Completed Flow Line
- Proposed Burnout
- Fire Break Planned or Incomplete
- Aerial Retardant Drop
- Wildfire Daily Fire Perimeter
- Retardant Avoidance Area
- Wilderness
- NHD Waterbody