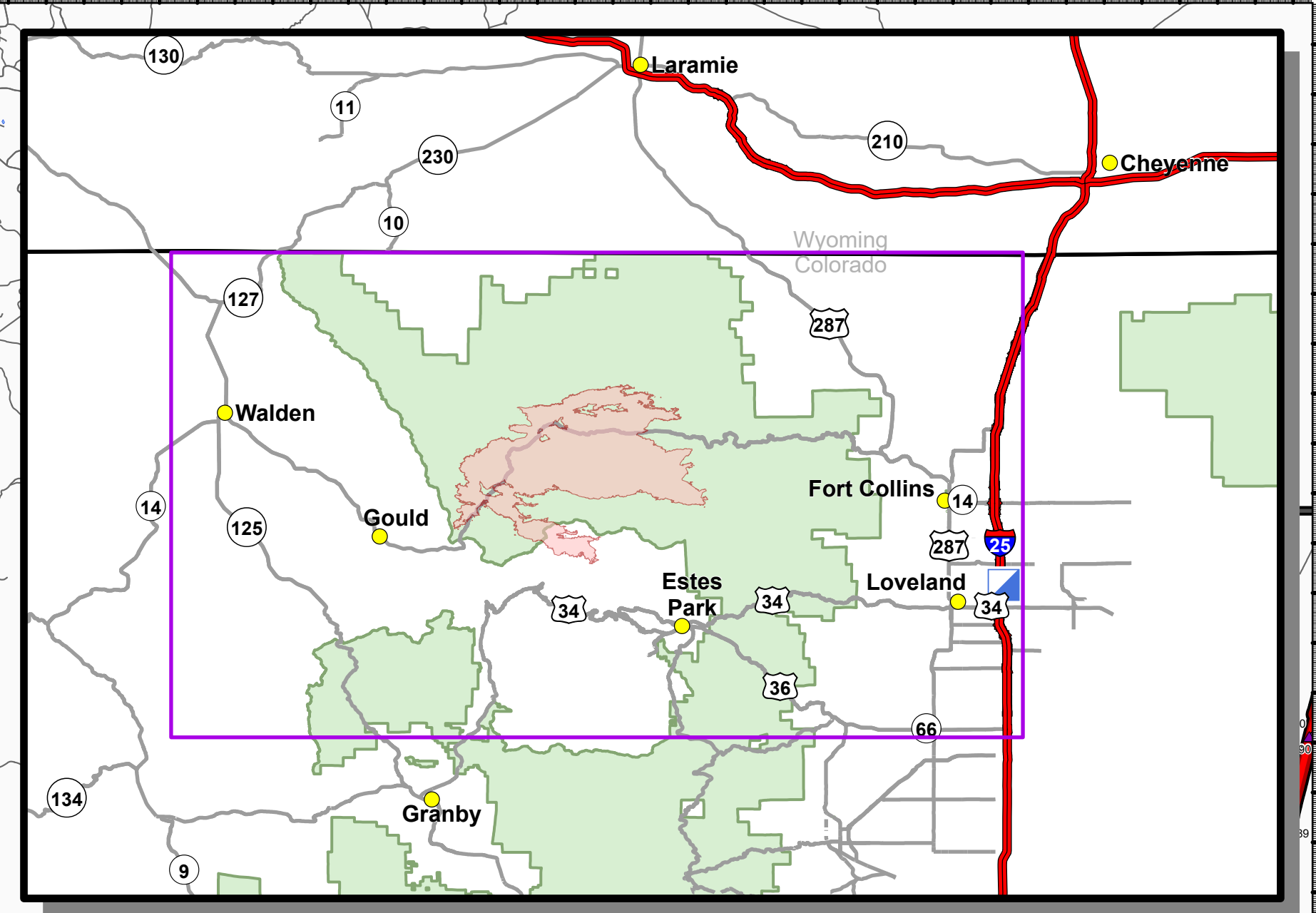
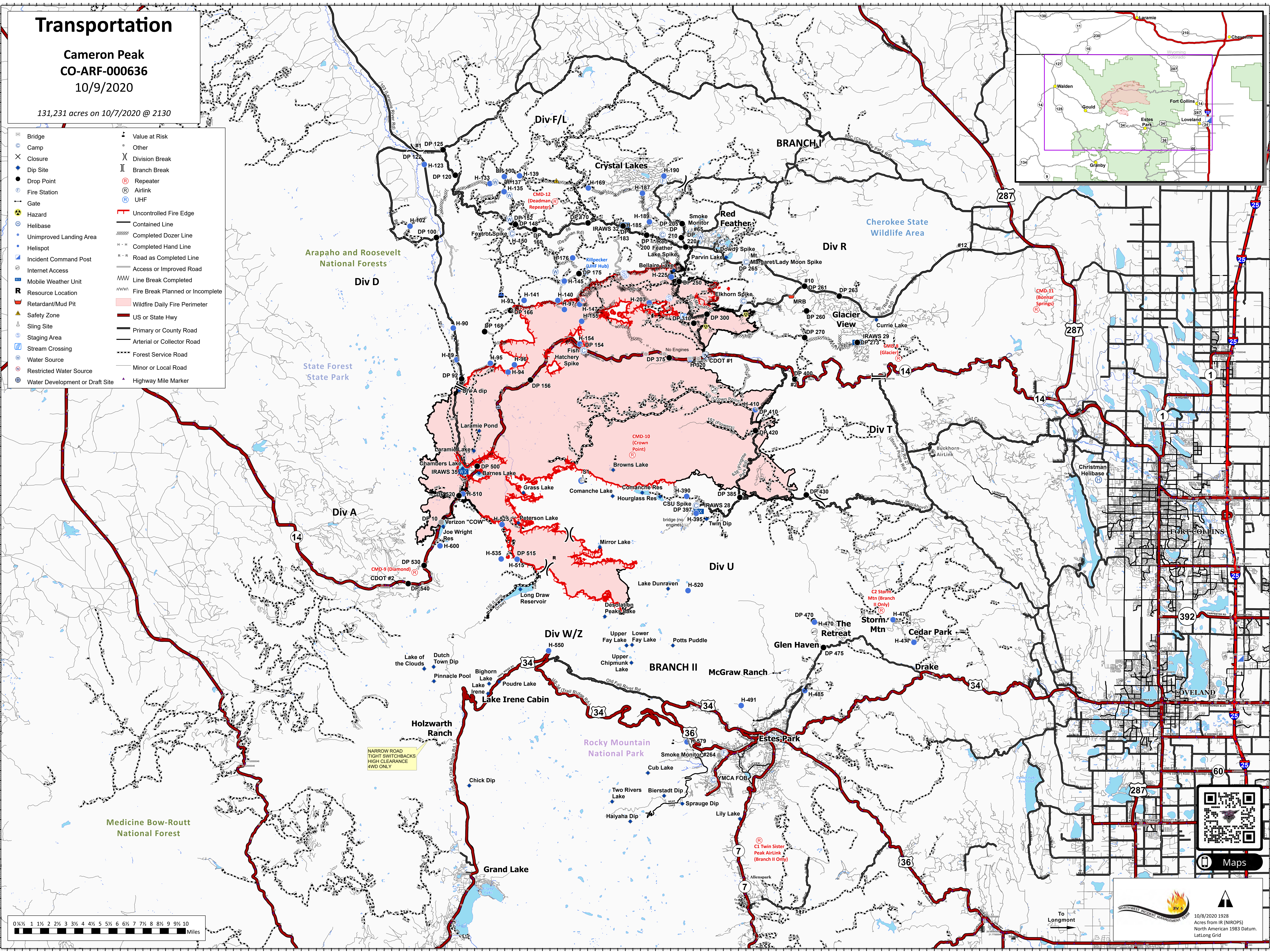


# Transportation

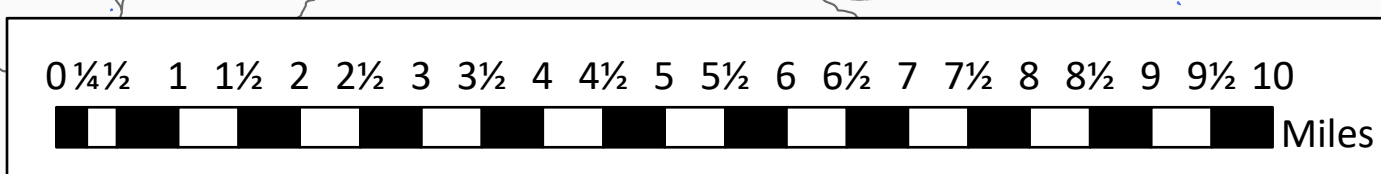
Cameron Peak  
CO-ARF-000636  
10/9/2020

131,231 acres on 10/7/2020 @ 2130

- |                                 |                                  |
|---------------------------------|----------------------------------|
| Bridge                          | Value at Risk                    |
| Camp                            | Other                            |
| Closure                         | Division Break                   |
| Dip Site                        | Branch Break                     |
| Drop Point                      | Repeater                         |
| Fire Station                    | Airlink                          |
| Gate                            | UHF                              |
| Hazard                          | Uncontrolled Fire Edge           |
| Helibase                        | Contained Line                   |
| Unimproved Landing Area         | Completed Dozer Line             |
| Helispot                        | Completed Hand Line              |
| Incident Command Post           | Road as Completed Line           |
| Internet Access                 | Access or Improved Road          |
| Mobile Weather Unit             | Line Break Completed             |
| Resource Location               | Fire Break Planned or Incomplete |
| Retardant/Mud Pit               | Wildfire Daily Fire Perimeter    |
| Safety Zone                     | US or State Hwy                  |
| Sling Site                      | Primary or County Road           |
| Staging Area                    | Arterial or Collector Road       |
| Stream Crossing                 | Forest Service Road              |
| Water Source                    | Minor or Local Road              |
| Restricted Water Source         | Highway Mile Marker              |
| Water Development or Draft Site |                                  |



NARROW ROAD  
TIGHT SWITCHBACKS  
HIGH CLEARANCE  
4WD ONLY



Northwest Incident Management System logo  
10/8/2020 1928  
Acres from IR (NIROPS)  
North American 1983 Datum.  
LatLong Grid



Maps