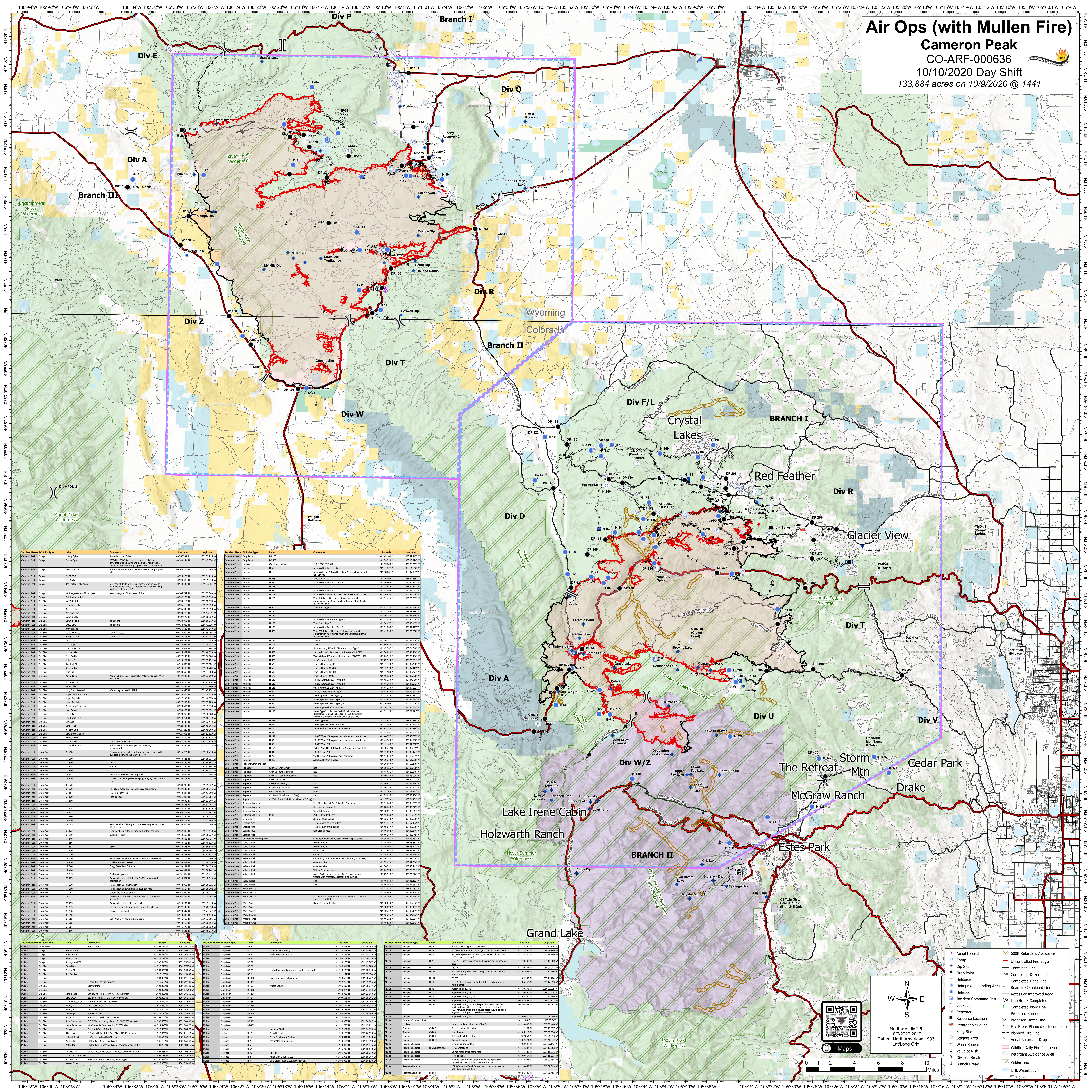


Air Ops (with Mullen Fire)

Cameron Peak

CO-ARF-000636
10/10/2020 Day Shift
133,884 acres on 10/9/2020 @ 1441



| Incident Name | PC Point Type | Label | Comments | Latitude | Longitude |
|---------------|---------------|-------------|--------------------------|------------------|-------------------|
| Cameron Peak | Camp | Stony Spike | Barney's Barren Spike | 40° 42' 36.14" N | 105° 51' 54.17" W |
| Cameron Peak | Camp | Rob Roy Dip | Approved for Type 1 or 2 | 40° 42' 36.14" N | 105° 51' 54.17" W |
| Cameron Peak | Camp | Rob Roy Dip | Approved for Type 1 or 2 | 40° 42' 36.14" N | 105° 51' 54.17" W |
| Cameron Peak | Camp | Rob Roy Dip | Approved for Type 1 or 2 | 40° 42' 36.14" N | 105° 51' 54.17" W |
| Cameron Peak | Camp | Rob Roy Dip | Approved for Type 1 or 2 | 40° 42' 36.14" N | 105° 51' 54.17" W |
| Cameron Peak | Camp | Rob Roy Dip | Approved for Type 1 or 2 | 40° 42' 36.14" N | 105° 51' 54.17" W |
| Cameron Peak | Camp | Rob Roy Dip | Approved for Type 1 or 2 | 40° 42' 36.14" N | 105° 51' 54.17" W |
| Cameron Peak | Camp | Rob Roy Dip | Approved for Type 1 or 2 | 40° 42' 36.14" N | 105° 51' 54.17" W |
| Cameron Peak | Camp | Rob Roy Dip | Approved for Type 1 or 2 | 40° 42' 36.14" N | 105° 51' 54.17" W |
| Cameron Peak | Camp | Rob Roy Dip | Approved for Type 1 or 2 | 40° 42' 36.14" N | 105° 51' 54.17" W |

| Incident Name | PC Point Type | Label | Comments | Latitude | Longitude |
|---------------|---------------|-------------|--------------------------|------------------|-------------------|
| Cameron Peak | Camp | Rob Roy Dip | Approved for Type 1 or 2 | 40° 42' 36.14" N | 105° 51' 54.17" W |
| Cameron Peak | Camp | Rob Roy Dip | Approved for Type 1 or 2 | 40° 42' 36.14" N | 105° 51' 54.17" W |
| Cameron Peak | Camp | Rob Roy Dip | Approved for Type 1 or 2 | 40° 42' 36.14" N | 105° 51' 54.17" W |
| Cameron Peak | Camp | Rob Roy Dip | Approved for Type 1 or 2 | 40° 42' 36.14" N | 105° 51' 54.17" W |
| Cameron Peak | Camp | Rob Roy Dip | Approved for Type 1 or 2 | 40° 42' 36.14" N | 105° 51' 54.17" W |
| Cameron Peak | Camp | Rob Roy Dip | Approved for Type 1 or 2 | 40° 42' 36.14" N | 105° 51' 54.17" W |
| Cameron Peak | Camp | Rob Roy Dip | Approved for Type 1 or 2 | 40° 42' 36.14" N | 105° 51' 54.17" W |
| Cameron Peak | Camp | Rob Roy Dip | Approved for Type 1 or 2 | 40° 42' 36.14" N | 105° 51' 54.17" W |
| Cameron Peak | Camp | Rob Roy Dip | Approved for Type 1 or 2 | 40° 42' 36.14" N | 105° 51' 54.17" W |
| Cameron Peak | Camp | Rob Roy Dip | Approved for Type 1 or 2 | 40° 42' 36.14" N | 105° 51' 54.17" W |

| Incident Name | PC Point Type | Label | Comments | Latitude | Longitude |
|---------------|---------------|-------------|--------------------------|------------------|-------------------|
| Cameron Peak | Camp | Rob Roy Dip | Approved for Type 1 or 2 | 40° 42' 36.14" N | 105° 51' 54.17" W |
| Cameron Peak | Camp | Rob Roy Dip | Approved for Type 1 or 2 | 40° 42' 36.14" N | 105° 51' 54.17" W |
| Cameron Peak | Camp | Rob Roy Dip | Approved for Type 1 or 2 | 40° 42' 36.14" N | 105° 51' 54.17" W |
| Cameron Peak | Camp | Rob Roy Dip | Approved for Type 1 or 2 | 40° 42' 36.14" N | 105° 51' 54.17" W |
| Cameron Peak | Camp | Rob Roy Dip | Approved for Type 1 or 2 | 40° 42' 36.14" N | 105° 51' 54.17" W |
| Cameron Peak | Camp | Rob Roy Dip | Approved for Type 1 or 2 | 40° 42' 36.14" N | 105° 51' 54.17" W |
| Cameron Peak | Camp | Rob Roy Dip | Approved for Type 1 or 2 | 40° 42' 36.14" N | 105° 51' 54.17" W |
| Cameron Peak | Camp | Rob Roy Dip | Approved for Type 1 or 2 | 40° 42' 36.14" N | 105° 51' 54.17" W |
| Cameron Peak | Camp | Rob Roy Dip | Approved for Type 1 or 2 | 40° 42' 36.14" N | 105° 51' 54.17" W |
| Cameron Peak | Camp | Rob Roy Dip | Approved for Type 1 or 2 | 40° 42' 36.14" N | 105° 51' 54.17" W |

| Incident Name | PC Point Type | Label | Comments | Latitude | Longitude |
|---------------|---------------|-------------|--------------------------|------------------|-------------------|
| Cameron Peak | Camp | Rob Roy Dip | Approved for Type 1 or 2 | 40° 42' 36.14" N | 105° 51' 54.17" W |
| Cameron Peak | Camp | Rob Roy Dip | Approved for Type 1 or 2 | 40° 42' 36.14" N | 105° 51' 54.17" W |
| Cameron Peak | Camp | Rob Roy Dip | Approved for Type 1 or 2 | 40° 42' 36.14" N | 105° 51' 54.17" W |
| Cameron Peak | Camp | Rob Roy Dip | Approved for Type 1 or 2 | 40° 42' 36.14" N | 105° 51' 54.17" W |
| Cameron Peak | Camp | Rob Roy Dip | Approved for Type 1 or 2 | 40° 42' 36.14" N | 105° 51' 54.17" W |
| Cameron Peak | Camp | Rob Roy Dip | Approved for Type 1 or 2 | 40° 42' 36.14" N | 105° 51' 54.17" W |
| Cameron Peak | Camp | Rob Roy Dip | Approved for Type 1 or 2 | 40° 42' 36.14" N | 105° 51' 54.17" W |
| Cameron Peak | Camp | Rob Roy Dip | Approved for Type 1 or 2 | 40° 42' 36.14" N | 105° 51' 54.17" W |
| Cameron Peak | Camp | Rob Roy Dip | Approved for Type 1 or 2 | 40° 42' 36.14" N | 105° 51' 54.17" W |
| Cameron Peak | Camp | Rob Roy Dip | Approved for Type 1 or 2 | 40° 42' 36.14" N | 105° 51' 54.17" W |

| Incident Name | PC Point Type | Label | Comments | Latitude | Longitude |
|---------------|---------------|-------------|--------------------------|------------------|-------------------|
| Cameron Peak | Camp | Rob Roy Dip | Approved for Type 1 or 2 | 40° 42' 36.14" N | 105° 51' 54.17" W |
| Cameron Peak | Camp | Rob Roy Dip | Approved for Type 1 or 2 | 40° 42' 36.14" N | 105° 51' 54.17" W |
| Cameron Peak | Camp | Rob Roy Dip | Approved for Type 1 or 2 | 40° 42' 36.14" N | 105° 51' 54.17" W |
| Cameron Peak | Camp | Rob Roy Dip | Approved for Type 1 or 2 | 40° 42' 36.14" N | 105° 51' 54.17" W |
| Cameron Peak | Camp | Rob Roy Dip | Approved for Type 1 or 2 | 40° 42' 36.14" N | 105° 51' 54.17" W |
| Cameron Peak | Camp | Rob Roy Dip | Approved for Type 1 or 2 | 40° 42' 36.14" N | 105° 51' 54.17" W |
| Cameron Peak | Camp | Rob Roy Dip | Approved for Type 1 or 2 | 40° 42' 36.14" N | 105° 51' 54.17" W |
| Cameron Peak | Camp | Rob Roy Dip | Approved for Type 1 or 2 | 40° 42' 36.14" N | 105° 51' 54.17" W |
| Cameron Peak | Camp | Rob Roy Dip | Approved for Type 1 or 2 | 40° 42' 36.14" N | 105° 51' 54.17" W |
| Cameron Peak | Camp | Rob Roy Dip | Approved for Type 1 or 2 | 40° 42' 36.14" N | 105° 51' 54.17" W |

Northwest IMT 6
10/9/2020 2017
Datum: North American 1983
Lat/Long: NAD 83

- Aerial Hazard
- Camp
- Dip Site
- Drop Point
- Helibase
- Unimproved Landing Area
- Helispot
- Incident Command Post
- Lookout
- Repeater
- Resource Location
- Sling Site
- Staging Area
- Water Source
- Value at Risk
- Division Break
- Branch Break
- 60ft Retardant Avoidance
- Uncontrolled Fire Edge
- Completed Hand Line
- Fire Break Completed
- Completed Flow Line
- Proposed Burnout
- Proposed Dozer Line
- Fire Break Planned or Incomplete
- Planned Fire Line
- Aerial Retardant Drop
- Wildfire Daily Fire Perimeter
- Retardant Avoidance Area
- Wildnerness
- NHWDwaterbody