

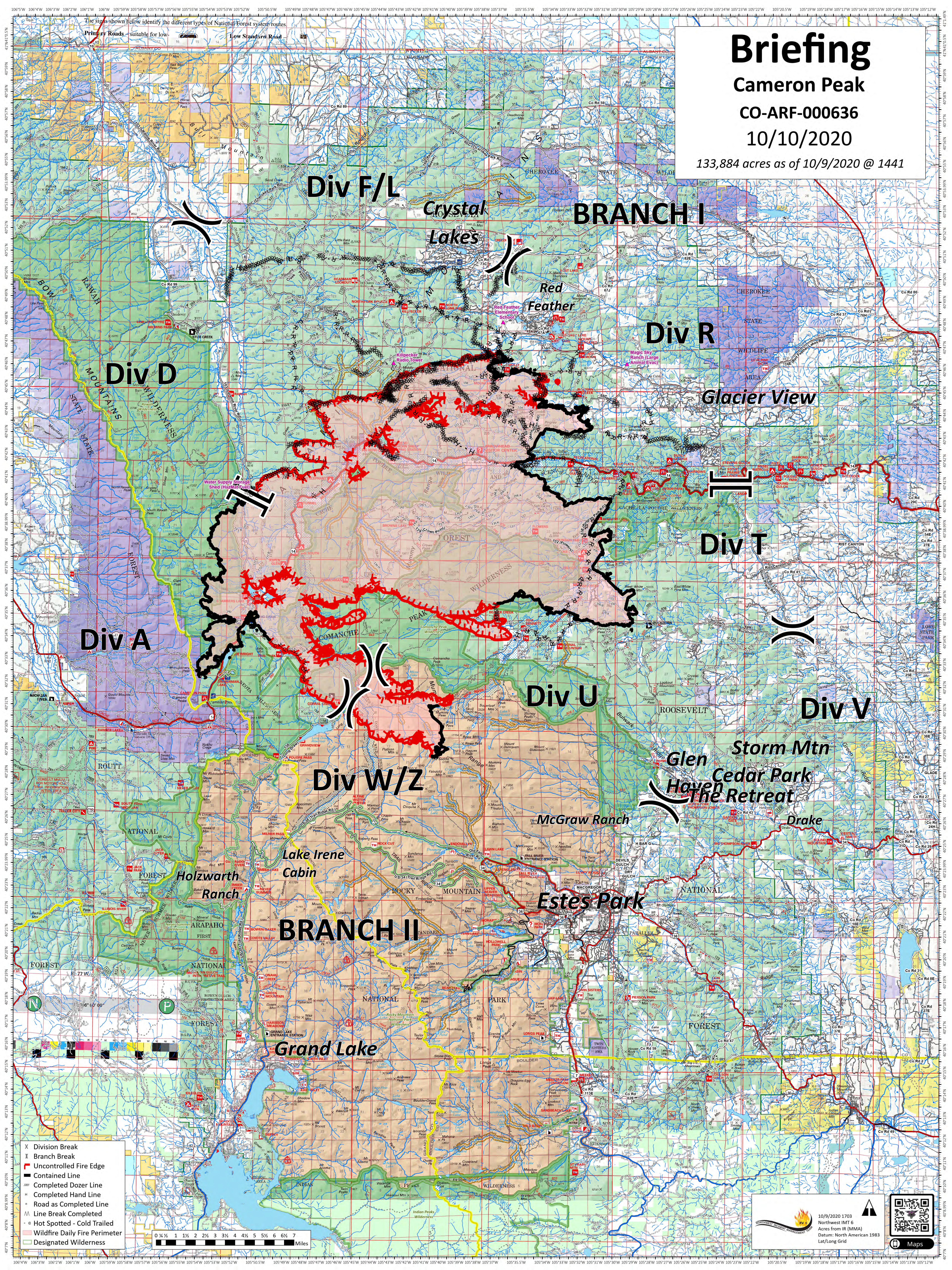
# Briefing

Cameron Peak

CO-ARF-000636

10/10/2020

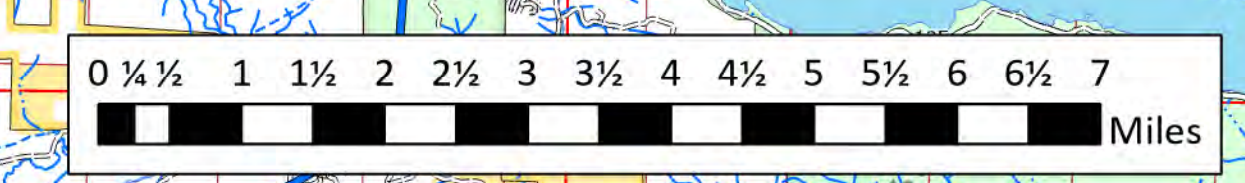
133,884 acres as of 10/9/2020 @ 1441



The signs shown below identify the different types of National Forest system routes

Primary Roads - suitable for low  
Low Standard Road

- X Division Break
- Branch Break
- Uncontrolled Fire Edge
- Contained Line
- Completed Dozer Line
- Completed Hand Line
- Road as Completed Line
- Line Break Completed
- Hot Spotted - Cold Trailed
- Wildfire Daily Fire Perimeter
- Designated Wilderness



10/9/2020 1703  
Northwest IMT 6  
Acres from IR (MMA)  
Datum: North American 1983  
Lat/Long Grid