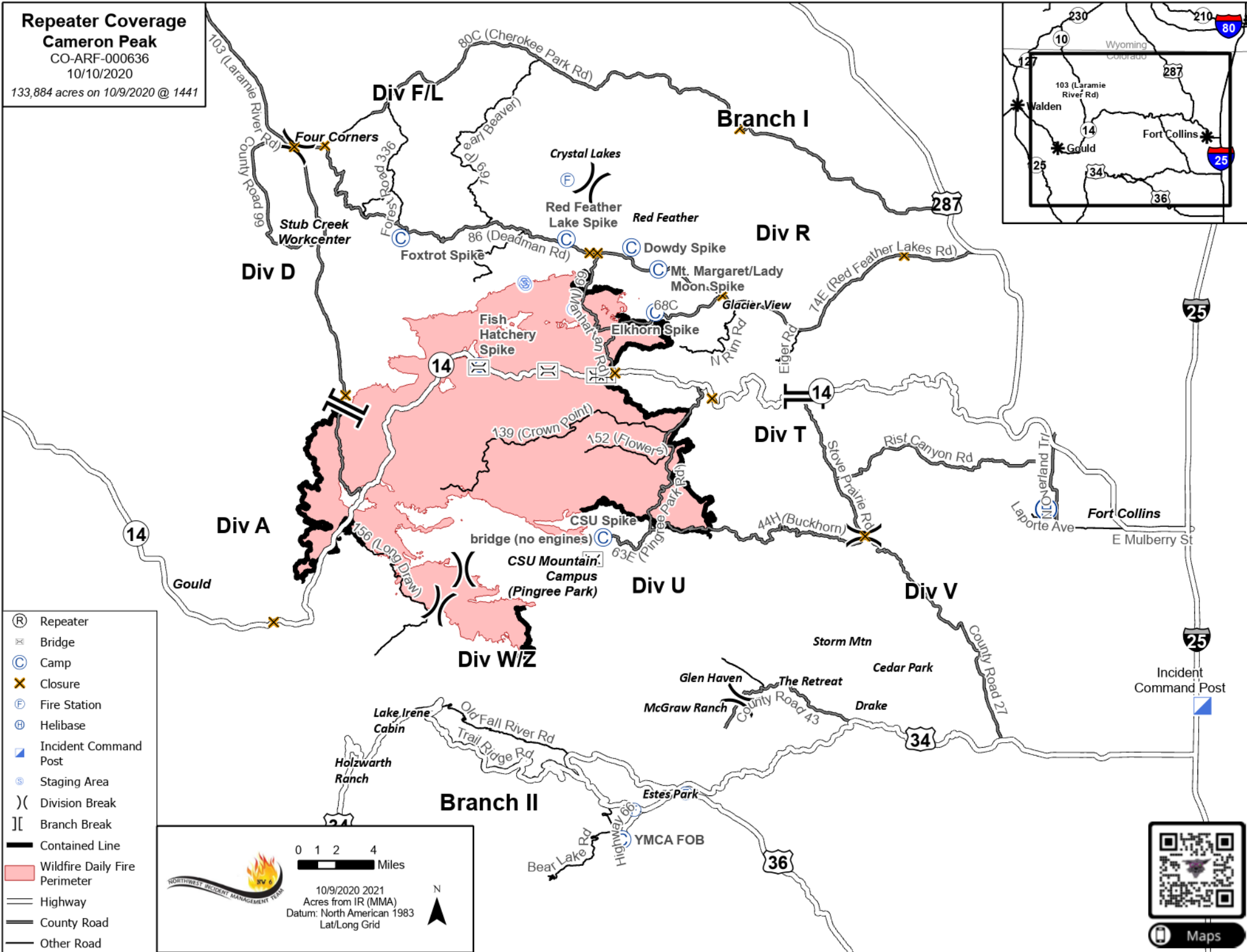
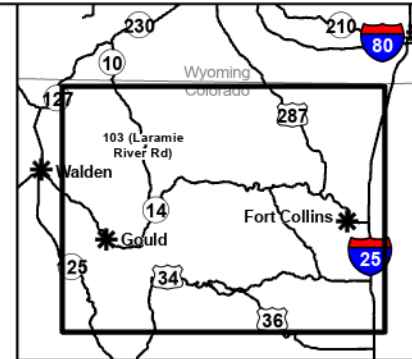



**Repeater Coverage
Cameron Peak**

CO-ARF-000636
10/10/2020

133,884 acres on 10/9/2020 @ 1441



- Ⓡ Repeater
- ⊗ Bridge
- Ⓢ Camp
- ✕ Closure
- Ⓡ Fire Station
- Ⓢ Helibase
- 🚒 Incident Command Post
- Ⓢ Staging Area
-) (Division Break
- [] Branch Break
- Contained Line
- Wildfire Daily Fire Perimeter
- Highway
- County Road
- Other Road



0 1 2 4
Miles

10/9/2020 2021
Acres from IR (MMA)
Datum: North American 1983
Lat/Long Grid

N

