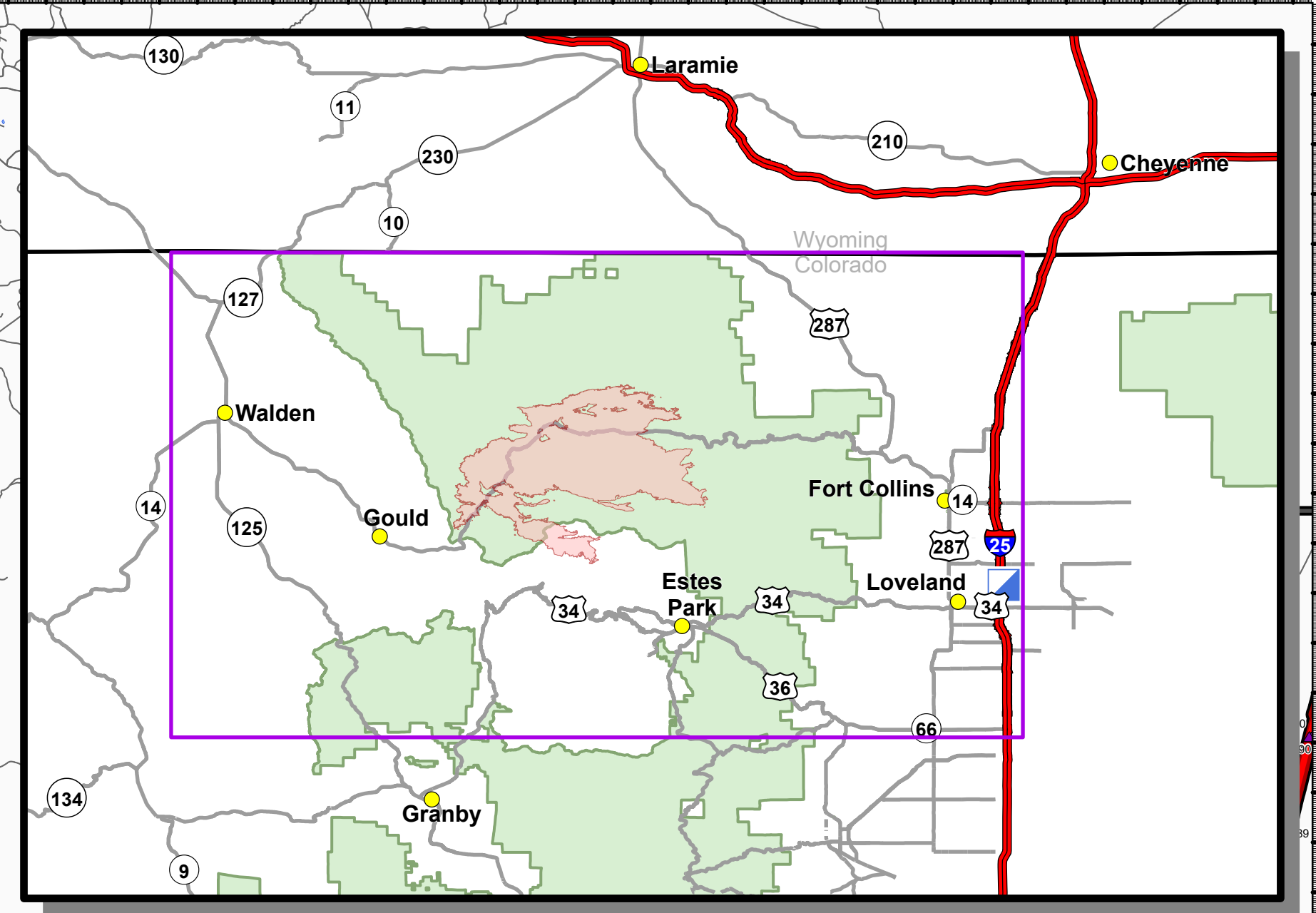
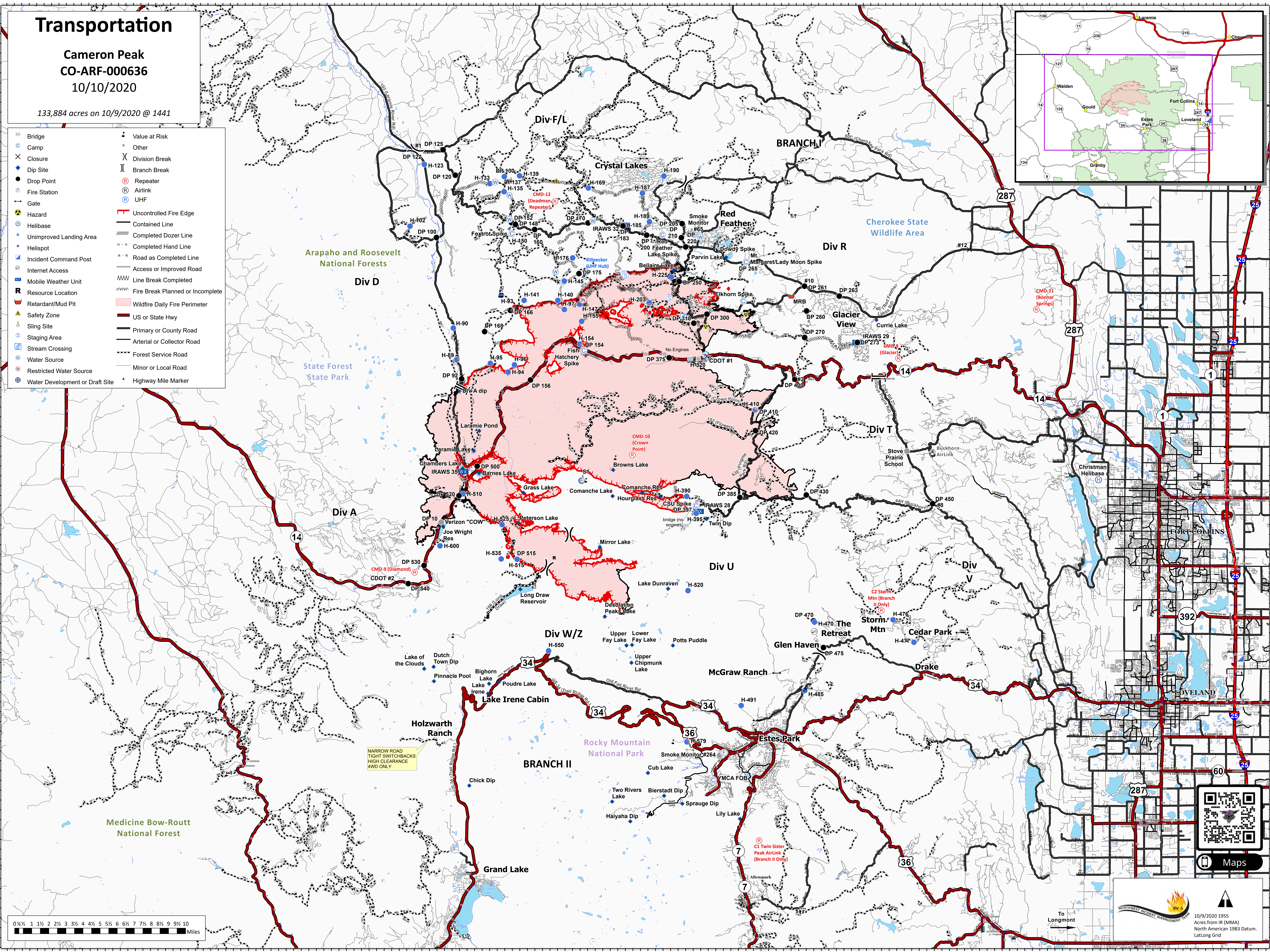


Transportation

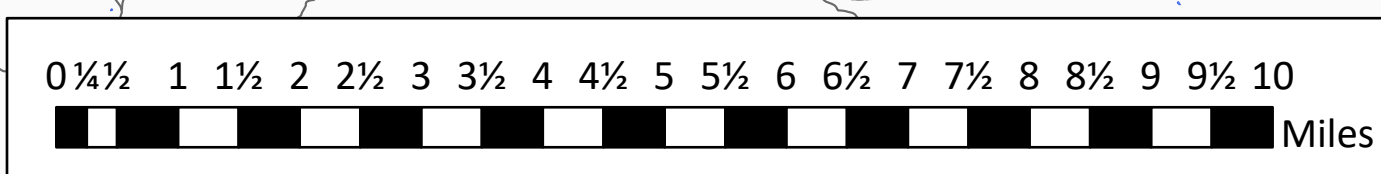
Cameron Peak
CO-ARF-000636
10/10/2020

133,884 acres on 10/9/2020 @ 1441

- | | |
|---------------------------------|----------------------------------|
| Bridge | Value at Risk |
| Camp | Other |
| Closure | Division Break |
| Dip Site | Branch Break |
| Drop Point | Repeater |
| Fire Station | Airlink |
| Gate | UHF |
| Hazard | Uncontrolled Fire Edge |
| Helibase | Contained Line |
| Unimproved Landing Area | Completed Dozer Line |
| Helispot | Completed Hand Line |
| Incident Command Post | Road as Completed Line |
| Internet Access | Access or Improved Road |
| Mobile Weather Unit | Line Break Completed |
| Resource Location | Fire Break Planned or Incomplete |
| Retardant/Mud Pit | Wildfire Daily Fire Perimeter |
| Safety Zone | US or State Hwy |
| Sling Site | Primary or County Road |
| Staging Area | Arterial or Collector Road |
| Stream Crossing | Forest Service Road |
| Water Source | Minor or Local Road |
| Restricted Water Source | Highway Mile Marker |
| Water Development or Draft Site | |



NARROW ROAD
TIGHT SWITCHBACKS
HIGH CLEARANCE
4WD ONLY



Northwest Incident Management System logo and a QR code in the bottom right corner. The logo features a stylized flame and the text 'NIMS'. Below the QR code is a 'Maps' button.

10/9/2020 1955
Acres from IR (MMA)
North American 1983 Datum.
LatLong Grid