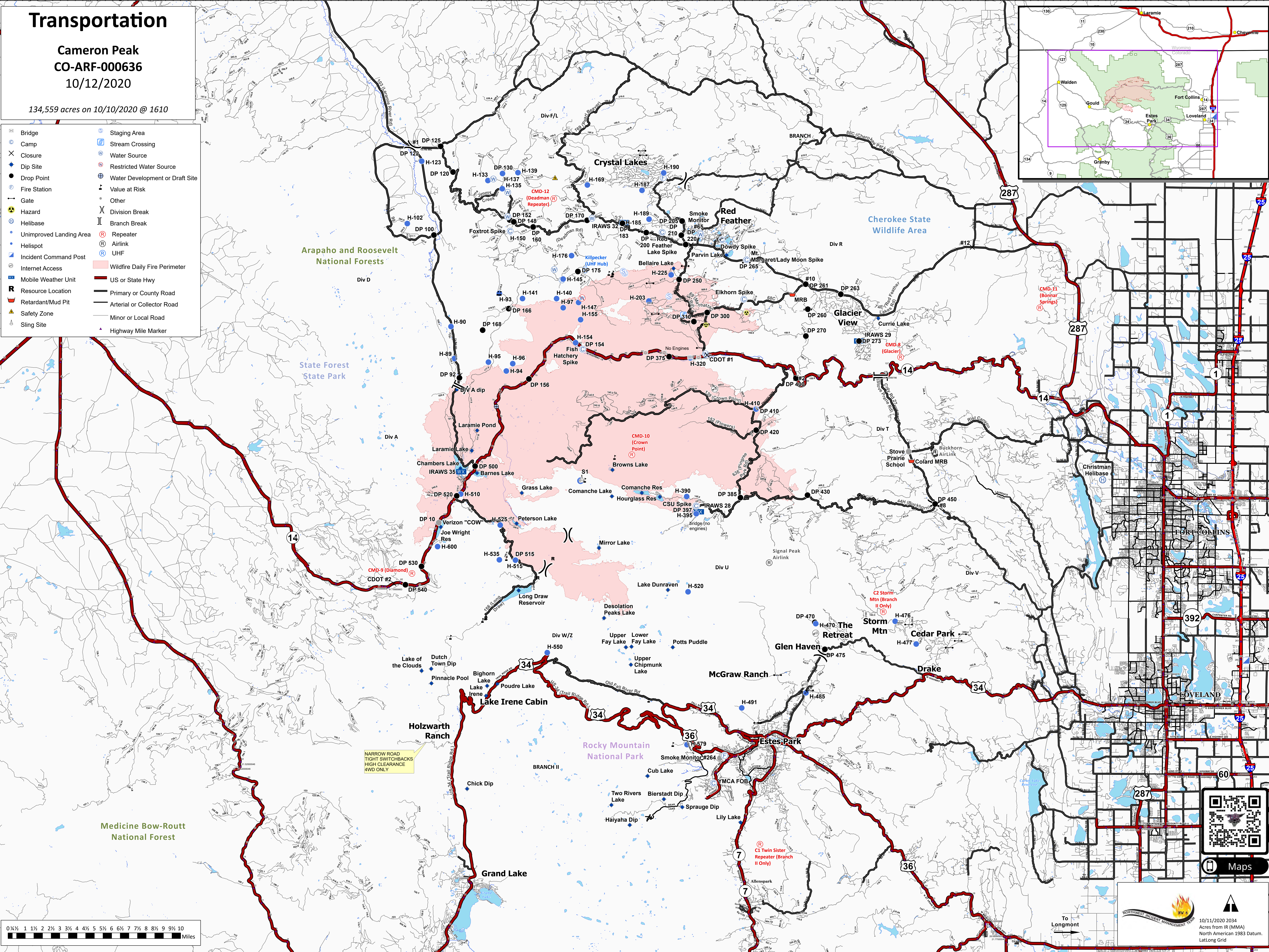
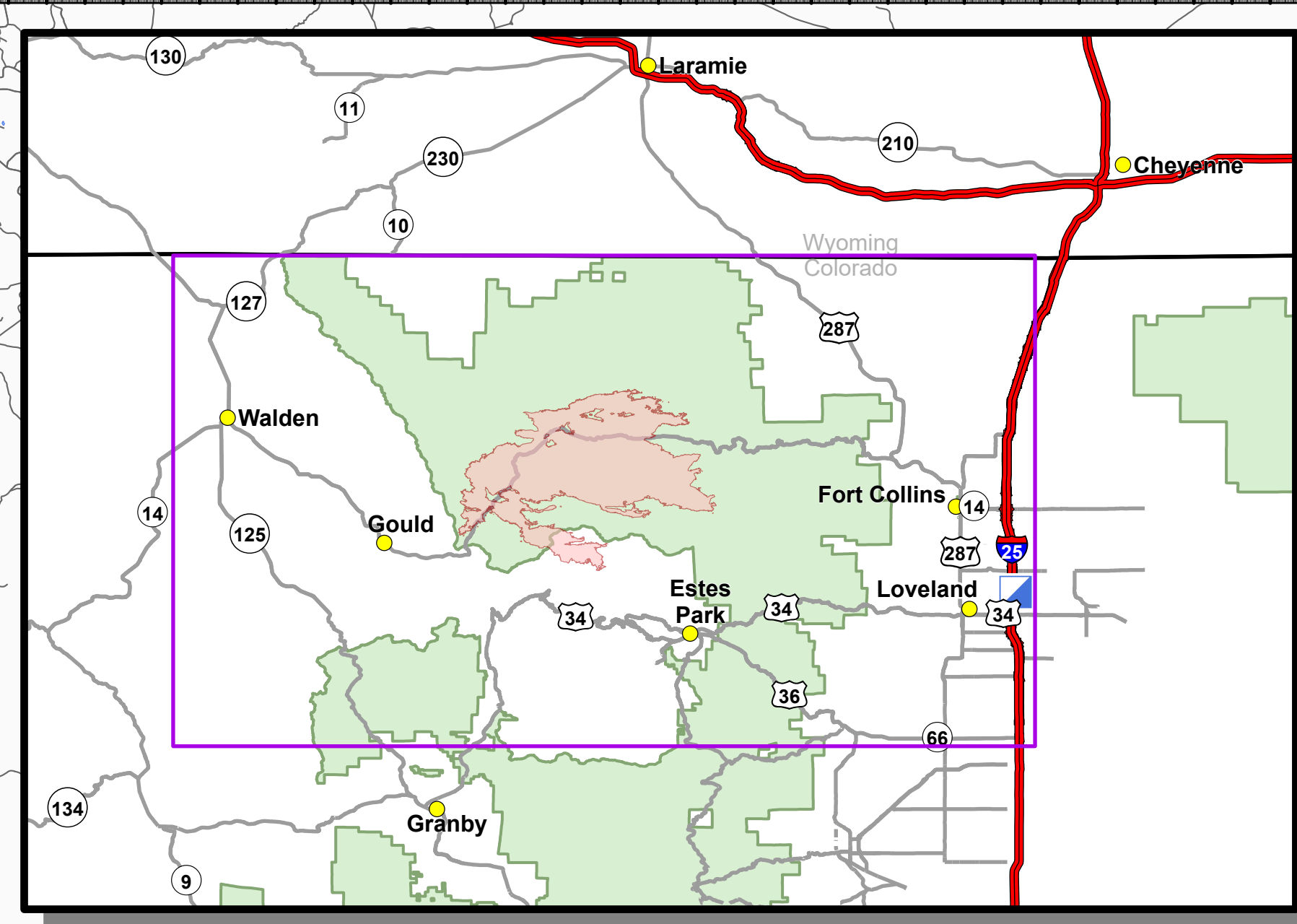


Transportation

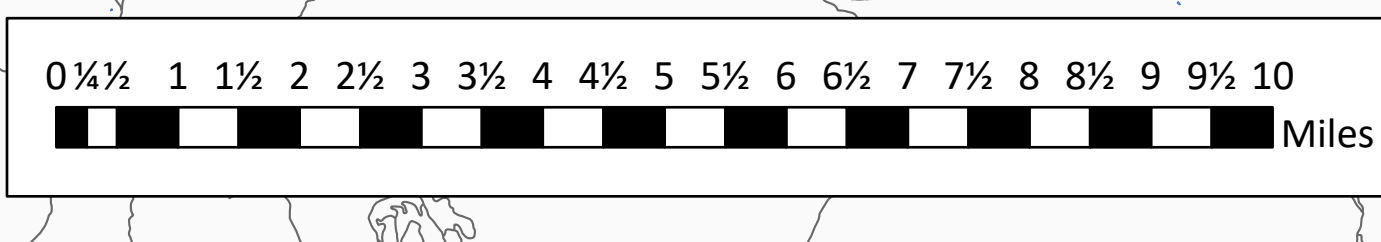
Cameron Peak
CO-ARF-000636
10/12/2020

134,559 acres on 10/10/2020 @ 1610

- Bridge
- Camp
- Closure
- Dip Site
- Drop Point
- Fire Station
- Gate
- Hazard
- Helibase
- Unimproved Landing Area
- Helispot
- Incident Command Post
- Internet Access
- Mobile Weather Unit
- Resource Location
- Retardant/Mud Pit
- Safety Zone
- Sling Site
- Staging Area
- Stream Crossing
- Water Source
- Restricted Water Source
- Water Development or Draft Site
- Value at Risk
- Other
- Division Break
- Branch Break
- Repeater
- Airlink
- UHF
- Wildfire Daily Fire Perimeter
- US or State Hwy
- Primary or County Road
- Arterial or Collector Road
- Minor or Local Road
- Highway Mile Marker



NARROW ROAD
TIGHT SWITCHBACKS
HIGH CLEARANCE
4WD ONLY



Northwest Incident Management Team logo and contact information.

10/11/2020 2034
Acres from IR (MMA)
North American 1983 Datum.
LatLong Grid

To Longmont

QR code and Maps button.