
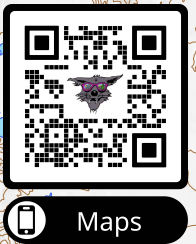


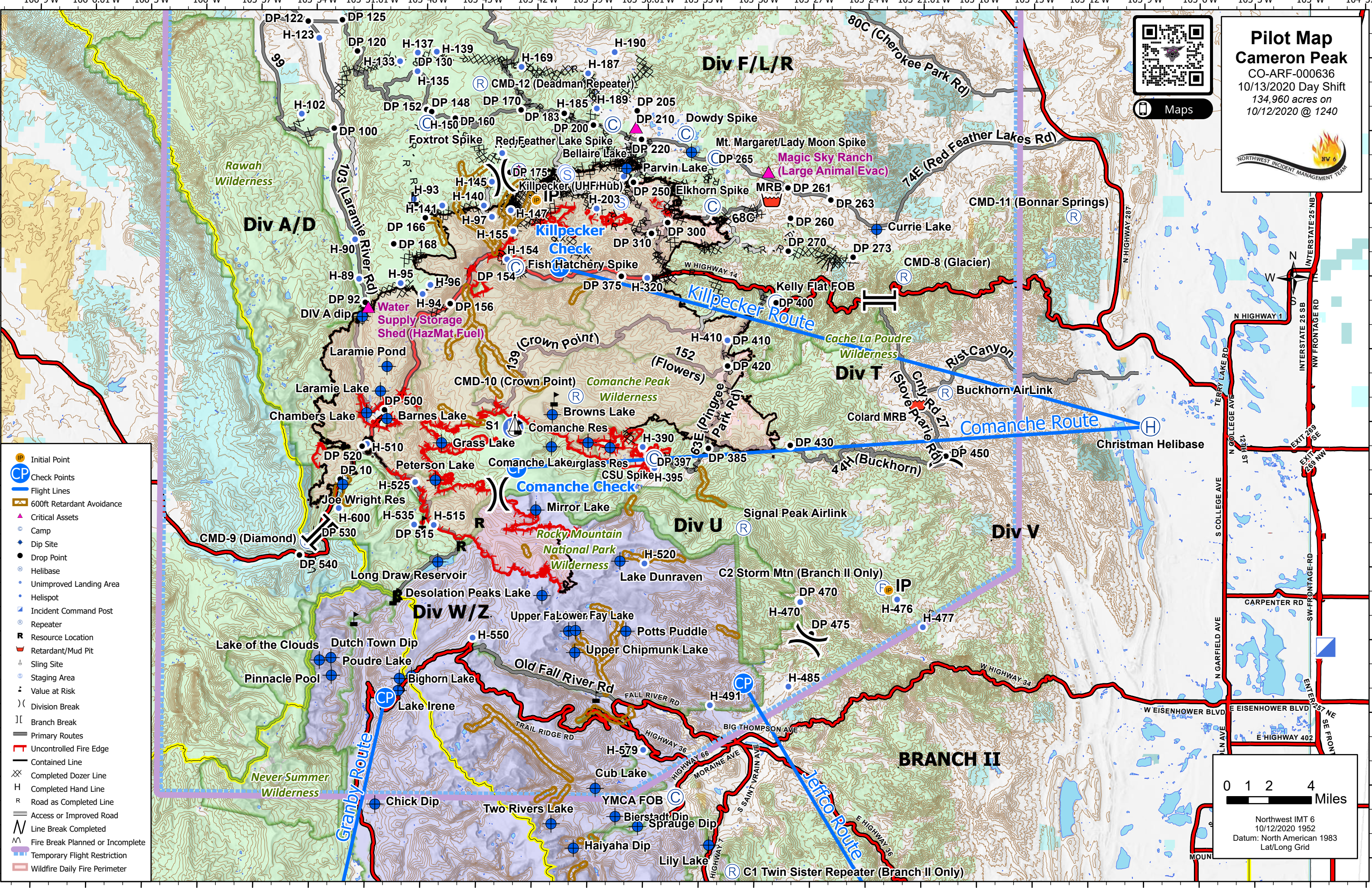
Pilot Map

Cameron Peak

CO-ARF-000636
 10/13/2020 Day Shift
 134,960 acres on
 10/12/2020 @ 1240

- Initial Point
- Check Points
- Flight Lines
- 600ft Retardant Avoidance
- Critical Assets
- Camp
- Dip Site
- Drop Point
- Helibase
- Unimproved Landing Area
- Helispot
- Incident Command Post
- Repeater
- Resource Location
- Retardant/Mud Pit
- Sling Site
- Staging Area
- Value at Risk
- Division Break
- Branch Break
- Primary Routes
- Uncontrolled Fire Edge
- Contained Line
- Completed Dozer Line
- Completed Hand Line
- Road as Completed Line
- Access or Improved Road
- Line Break Completed
- Fire Break Planned or Incomplete
- Temporary Flight Restriction
- Wildfire Daily Fire Perimeter



0 1 2 4 Miles

Northwest IMT 6
 10/12/2020 1952
 Datum: North American 1983
 Lat/Long Grid

FeatureCategory	Label	Comments	LatWGS84	DDM	LongWGS84	DPElevation
Dip Site	Barnes Lake		40° 35.940' N		105° 49.999' W	9,100
Dip Site	Bellaire Lake		40° 46.330' N		105° 37.110' W	
Dip Site	Bienstadt Dip		40° 19.599' N		105° 37.500' W	
Dip Site	Big Horn Lake		40° 25.226' N		105° 49.200' W	
Dip Site	Browns Lake		40° 36.160' N		105° 41.049' W	10,500
Dip Site	Chambers Lake		40° 36.170' N		105° 51.099' W	9,150
Dip Site	Chick Dip		40° 20.034' N		105° 50.457' W	
Dip Site	Comanche Lake	Wilderness - Verbal use approval, awaiting documentation	40° 34.830' N		105° 41.078' W	
Dip Site	Comanche Res	LUA in process	40° 35.014' N		105° 39.101' W	9,400
Dip Site	Cub Lake	LUA in process	40° 20.756' N		105° 38.583' W	
Dip Site	Currie Lake	LUA 1282A120K5113	40° 43.880' N		105° 23.530' W	
Dip Site	Desolation Peaks Lake		40° 28.694' N		105° 41.530' W	
Dip Site	DIY A dip		40° 40.137' N		105° 51.386' W	8,600
Dip Site	Grass Lake	small pond	40° 26.057' N		105° 52.902' W	
Dip Site	Dutch Town Dip		40° 34.960' N		105° 47.029' W	9,900
Dip Site	Haiyaha Dip	small pond	40° 18.282' N		105° 39.734' W	
Dip Site	Hourglass Res	LUA in process	40° 34.816' N		105° 37.907' W	9,400
Dip Site	Joe Wright Res		40° 33.210' N		105° 52.359' W	9,920
Dip Site	Lake Dunraven		40° 30.135' N		105° 37.330' W	
Dip Site	Lake Irene		40° 24.724' N		105° 49.264' W	
Dip Site	Lake of the Clouds		40° 25.953' N		105° 53.529' W	
Dip Site	Laramie Lake	small pond	40° 37.070' N		105° 50.359' W	9,400
Dip Site	Laramie Pond	small pond	40° 18.447' N		105° 32.443' W	9,500
Dip Site	Lily Lake		40° 30.048' N		105° 47.178' W	
Dip Site	Long Draw Reservoir	Water may be used in RMNP	40° 27.263' N		105° 39.706' W	
Dip Site	Lower Fay Lake		40° 32.220' N		105° 41.900' W	
Dip Site	Mirror Lake	Approved 9/18 George Schitzler, Wildlife Manager (970) 420-1466	40° 47.020' N		105° 33.600' W	
Dip Site	Parvin Lake					
Dip Site	Peterson Lake		40° 33.420' N		105° 47.349' W	
Dip Site	Pinnacle Pool		40° 25.330' N		105° 52.872' W	9,500
Dip Site	Potts Puddle	Requires dust abatement prior to use	40° 27.249' N		105° 36.984' W	
Dip Site	Poudre Lake		40° 25.332' N		105° 48.534' W	
Dip Site	Sprague Dip		40° 19.199' N		105° 36.284' W	
Dip Site	Two Rivers Lake		40° 19.281' N		105° 40.949' W	
Dip Site	Upper Chipmunk Lake		40° 26.353' N		105° 39.736' W	
Dip Site	Upper Fay Lake		40° 27.235' N		105° 40.073' W	
Helibase	Christman Helibase	LUA1282X20K5017	40° 35.780' N		105° 08.659' W	5,150
Helibase	H-102	Type 2	40° 48.470' N		105° 54.780' W	8,400
Helibase	H-123	Type 2	40° 51.619' N		105° 53.867' W	8,350
Helibase	H-133	Type 3: Private. No LUA. Minimize use. Verbal authorization from Scott Butcher, Diamond Trail Ranch (970) 491-9659	40° 50.677' N		105° 49.465' W	10,100
Helibase	H-135	Type 2	40° 50.271' N		105° 48.506' W	10,070
Helibase	H-137	Approved for Type 2 and Type 3	40° 51.038' N		105° 48.500' W	10,076
Helibase	H-139	Approved for Type 2 or Type 3	40° 51.088' N		105° 47.476' W	
Helibase	H-140	10,200' Approved 9/14 Type 2/3	40° 44.763' N		105° 44.843' W	10,250
Helibase	H-141	9,950' Approved 9/14 Type 2/3	40° 44.750' N		105° 47.100' W	
Helibase	H-145	10,400' Approved 9/14 Type 2/3	40° 45.750' N		105° 44.420' W	
Helibase	H-147	10,000' Type 2/3 requires dust abatement prior to use	40° 44.577' N		105° 43.385' W	
Helibase	H-150	Approved Type 2. Could file a Type 1 or multiple aircraft for PSD ops.	40° 48.081' N		105° 47.950' W	9,900
Helibase	H-154	7,730' Approved Type 2/3 helicopter	40° 42.550' N		105° 43.561' W	
Helibase	H-155	Requires dust abatement prior to use	40° 43.710' N		105° 43.240' W	
Helibase	H-169	Approved for T-2 or T-3 Helicopter. Trees at NE corner	40° 50.496' N		105° 42.864' W	9,500
Helibase	H-176	Approved 9/15 Type 2/3	40° 46.933' N		105° 43.875' W	
Helibase	H-185	Type I/II elev 10,900'	40° 48.622' N		105° 40.513' W	9,500
Helibase	H-187		40° 50.250' N		105° 39.239' W	8,600
Helibase	H-189		40° 48.796' N		105° 38.756' W	8,740
Helibase	H-190	8,400' Type 2/3. Private. No LUA. Minimize use. Redfeather FD Chief Hill (720) 427-3893 indicates unknown ownership and they use it all the time.	40° 51.135' N		105° 37.811' W	
Helibase	H-203	9,200' Type 2/3 requires dust abatement	40° 44.678' N		105° 38.729' W	
Helibase	H-225	Type 3 only	40° 46.006' N		105° 37.266' W	8,700
Helibase	H-320	Type 3 only	40° 41.830' N		105° 35.960' W	7,225
Helibase	H-390	Approved for Type 3 or Type 2	40° 34.845' N		105° 36.137' W	9,100
Helibase	H-395	9,200' Approved 9/15 Type 2/3	40° 33.982' N		105° 35.495' W	
Helibase	H-410	Approved by Dth manager	40° 39.274' N		105° 31.586' W	
Helibase	H-470	7,800' Approved 9/14 Type 2/3	40° 28.482' N		105° 27.567' W	
Helibase	H-476	8,500' Type II/III	40° 28.620' N		105° 22.330' W	
Helibase	H-477	8,000' Type II/III Road into spot	40° 27.480' N		105° 20.935' W	
Helibase	H-485	Track # days A/C land at site for LUA 1282A120K5051	40° 24.996' N		105° 28.186' W	
Helibase	H-491	8,000' Approved 9/15 Type 2/3	40° 24.216' N		105° 32.415' W	
Helibase	H-510	Approved for Type 3 only	40° 34.877' N		105° 47.410' W	9,440
Helibase	H-515	Type II/III elev 10,200'	40° 31.573' N		105° 47.410' W	
Helibase	H-520	8,400' Approved 9/15 Type 2/3	40° 30.048' N		105° 36.004' W	
Helibase	H-525	Type II/III elev 9,900'	40° 33.333' N		105° 48.438' W	
Helibase	H-535	Type II/III elev 10,300'	40° 31.583' N		105° 48.473' W	
Helibase	H-550	Parking lot A/C. Requires coordination with ROMO.	40° 26.930' N		105° 45.260' W	
Helibase	H-579	RMNP approved site	40° 22.349' N		105° 36.004' W	
Helibase	H-600	Type 2 and Type 3	40° 32.220' N		105° 52.559' W	10,400
Helibase	H-89	Helispot along 103rd in Div A. Approved Type 2.	40° 41.697' N		105° 51.575' W	
Helibase	H-90	Approved for Type 2	40° 43.307' N		105° 51.818' W	8,400
Helibase	H-93	10,100' Type 2/3	40° 45.003' N		105° 48.637' W	9,670
Helibase	H-94	Approved for Type 2	40° 41.093' N		105° 48.127' W	
Helibase	H-95	10,100' Approved 9.14 Type 2/3	40° 41.533' N		105° 49.317' W	
Helibase	H-96	10,000' Type 2/3	40° 41.468' N		105° 47.707' W	
Helibase	H-97	10,100' Type 2/3 requires dust abatement prior to use	40° 44.303' N		105° 44.400' W	10,700
Mobile Weather Unit	IRAWS 28	Deadman Lookout Tower	40° 49.808' N		105° 45.106' W	9,020
Mobile Weather Unit	IRAWS 29	CSU Campus	40° 34.080' N		105° 35.339' W	10,250
Mobile Weather Unit	IRAWS 32	Moved to DP 273 on 10/1/20	40° 42.727' N		105° 24.800' W	
Mobile Weather Unit	IRAWS 35	Deadman Road, elev 9,531'	40° 48.619' N		105° 40.423' W	8,600
Repeater	Buckhorn AirLink	Chambers Lake	40° 36.000' N		105° 51.059' W	9,200
Repeater	C1 Twin Sister Repeater (Branch II Only)	Black	40° 37.149' N		105° 19.772' W	
Repeater	C2 Storm Mtn (Branch II Only)	Red	40° 17.359' N		105° 31.159' W	
Repeater	CMD-10 (Crown Point)	Red	40° 29.096' N		105° 23.108' W	11,600
Repeater	CMD-11 (Bomar Springs)	Red	40° 36.925' N		105° 39.776' W	6,800
Repeater	CMD-12 (Deadman Repeater)	Red	40° 44.431' N		105° 12.840' W	10,700
Repeater	CMD-8 (Glacier)	Red	40° 49.789' N		105° 45.094' W	7,300
Repeater	CMD-9 (Diamond)	Red	40° 41.925' N		105° 22.042' W	
Repeater	Killpecker (UHF Hub)	Red	40° 30.851' N		105° 54.230' W	11,600
Repeater	Signal Peak AirLink	Blue	40° 46.218' N		105° 42.961' W	
Resource Location		Black	40° 31.537' N		105° 30.656' W	
Resource Location		Fish Study Project Tag Collection Equipment	40° 31.665' N		105° 44.939' W	9,600
Resource Location		Data shack (wrapped)	40° 28.649' N		105° 49.325' W	
Resource Location		Snow tell (wrapped)	40° 30.691' N		105° 21.298' W	
Resource Location		Mobile Retardant Base	40° 36.706' N		105° 29.229' W	
Resource Location		Sling for spike camps	40° 35.710' N		105° 43.080' W	
Resource Location		wide open meadow/ helispot for Div U spike camp	40° 35.601' N		105° 43.157' W	9,700
Resource Location		Historic Cabins	40° 45.009' N		105° 48.553' W	9,700
Resource Location		Historic Cabins	40° 45.007' N		105° 48.722' W	
Resource Location		SNOTEL weather station	40° 48.343' N		105° 46.202' W	10,240
Resource Location		Ditch Cabin	40° 27.658' N		105° 51.637' W	10,200
Resource Location		Cabin	40° 28.654' N		105° 49.338' W	10,200
Resource Location		Cabin #3 (3 structures wrapped, plumbed, sprinklers)	40° 28.530' N		105° 49.530' W	
Resource Location		cabin remains	40° 35.629' N		105° 42.860' W	
Resource Location		cabin remains	40° 36.792' N		105° 40.911' W	
Resource Location		Willow Enclosure, metal	40° 24.574' N		105° 38.531' W	
Resource Location		Aspen Enclosure with approx 70 12' wooden posts treated with creosote, susceptible to burning.	40° 22.358' N		105° 36.926' W	
Resource Location		Fen	40° 46.080' N		105° 41.112' W	
Resource Location		Fen	40° 46.060' N		105° 41.381' W	
Resource Location		Imported from Avenza Layer, Corral Creek.	40° 31.658' N		105° 47.995' W	
Resource Location		Imported from Avenza layer, Second cabin.	40° 45.992' N		105° 41.141' W	
Resource Location		Imported from Avenza layer, Historic cabin div L.	40° 45.974' N		105° 41.189' W	