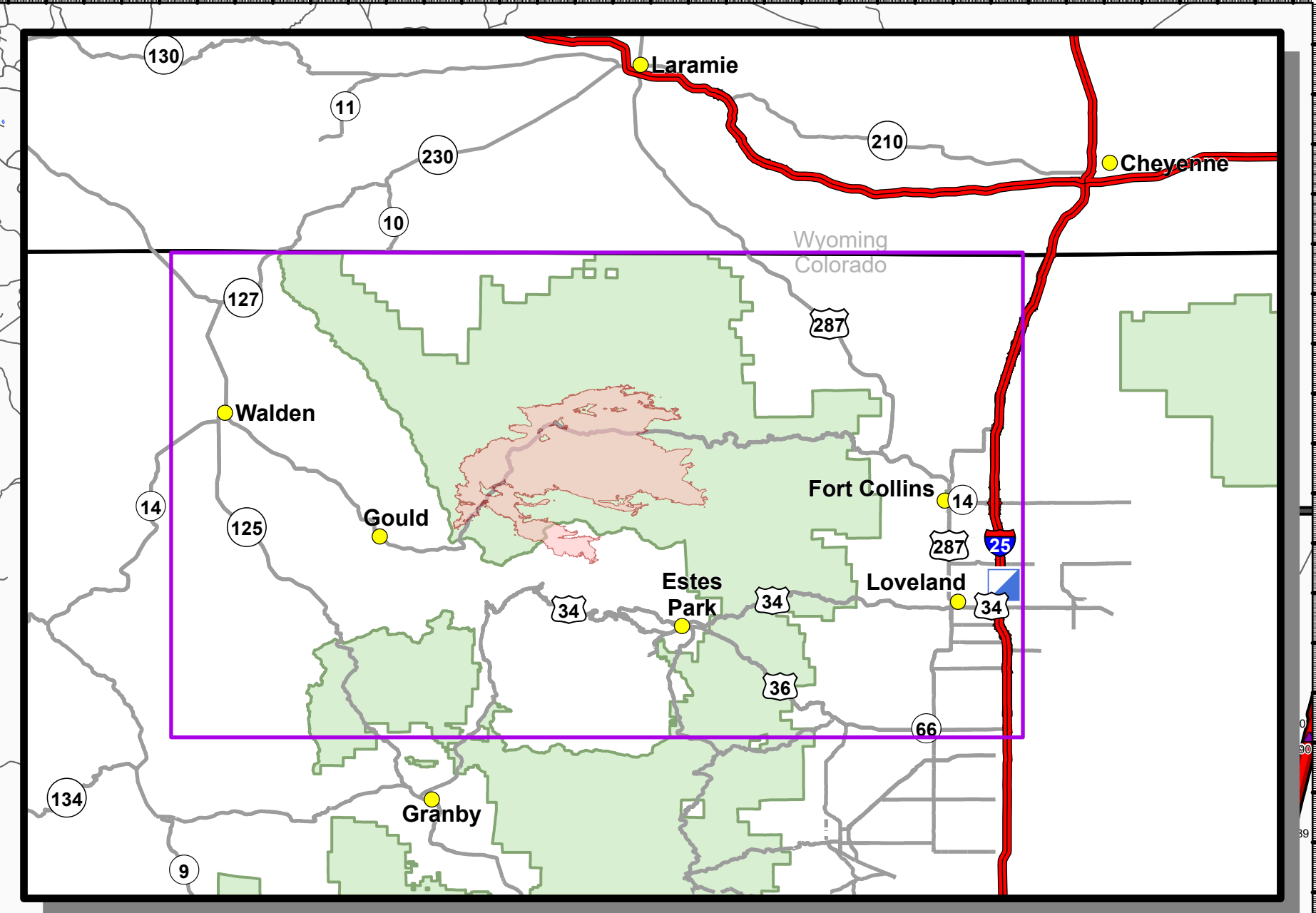
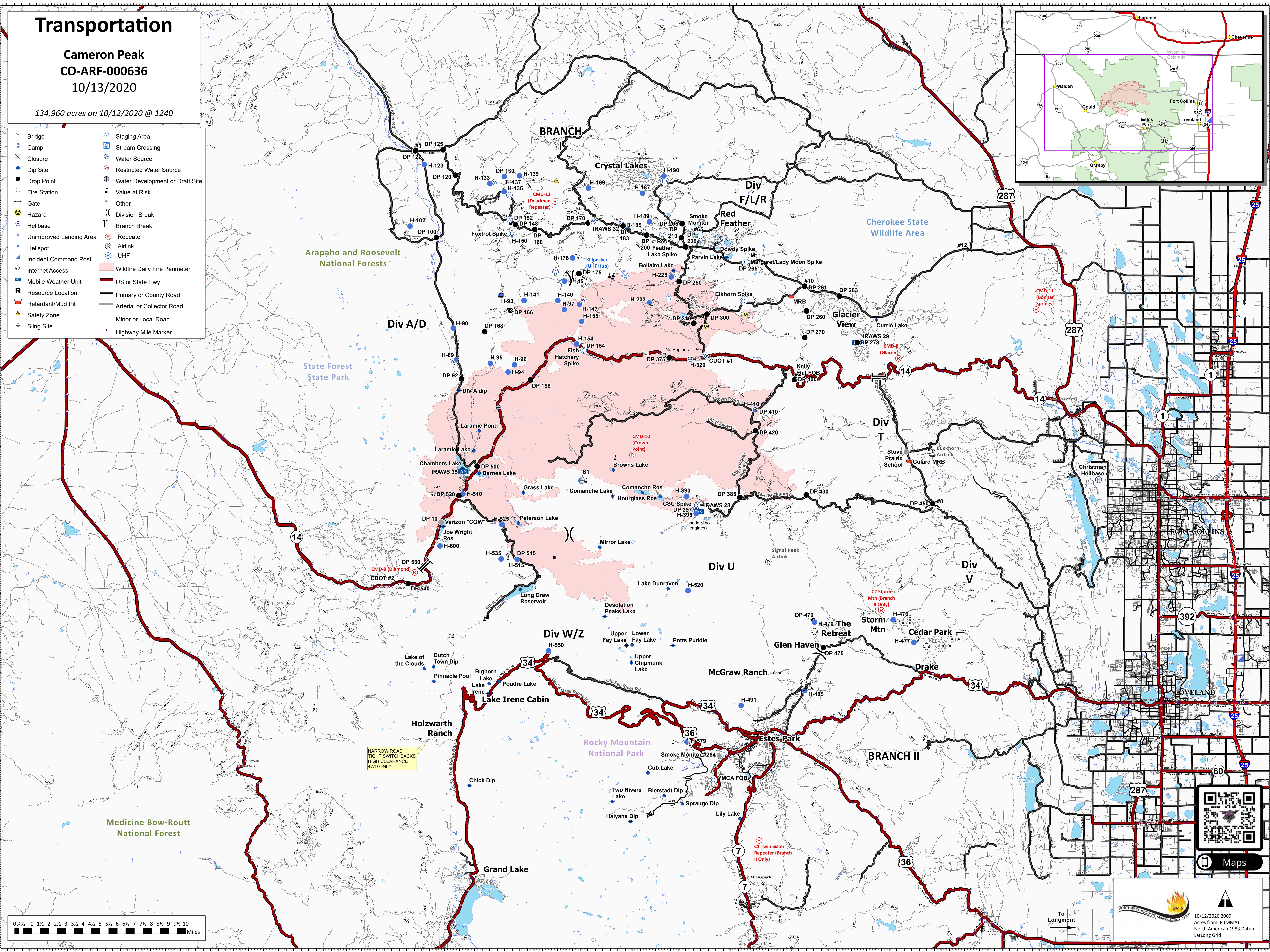


# Transportation

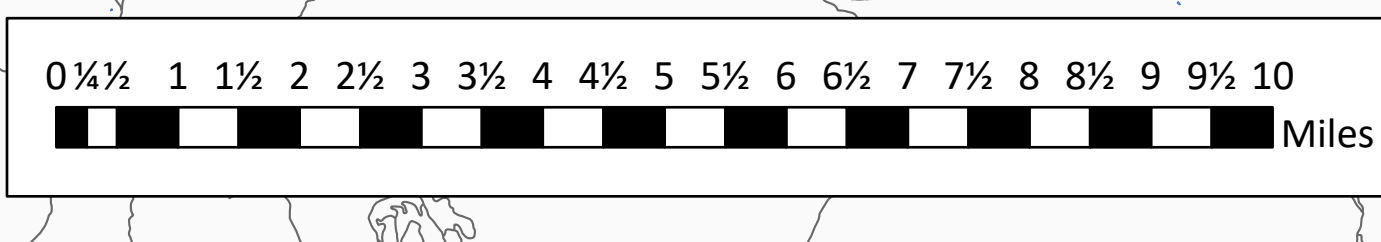
Cameron Peak  
CO-ARF-000636  
10/13/2020

134,960 acres on 10/12/2020 @ 1240

- |                         |                                 |
|-------------------------|---------------------------------|
| Bridge                  | Staging Area                    |
| Camp                    | Stream Crossing                 |
| Closure                 | Water Source                    |
| Dip Site                | Restricted Water Source         |
| Drop Point              | Water Development or Draft Site |
| Fire Station            | Value at Risk                   |
| Gate                    | Other                           |
| Hazard                  | Division Break                  |
| Helibase                | Branch Break                    |
| Unimproved Landing Area | Repeater                        |
| Helispot                | Airlink                         |
| Incident Command Post   | UHF                             |
| Internet Access         | Wildfire Daily Fire Perimeter   |
| Mobile Weather Unit     | US or State Hwy                 |
| Resource Location       | Primary or County Road          |
| Retardant/Mud Pit       | Arterial or Collector Road      |
| Safety Zone             | Minor or Local Road             |
| Sling Site              | Highway Mile Marker             |



NARROW ROAD  
TIGHT SWITCHBACKS  
HIGH CLEARANCE  
4WD ONLY



Northwest Incident Management Team logo  
10/12/2020 2009  
Acres from IR (MMA)  
North American 1983 Datum.  
LatLong Grid



Maps